

Multisite rainfall downscaling and disaggregation in a tropical urban area

Qin, Xiaosheng; Lu, Yan

2013

Lu, Y., & Qin, X. (2014). Multisite rainfall downscaling and disaggregation in a tropical urban area. *Journal of Hydrology*, 509, 55-65.

<https://hdl.handle.net/10356/80072>

<https://doi.org/10.1016/j.jhydrol.2013.11.027>

© 2013 Elsevier. This is the author created version of a work that has been peer reviewed and accepted for publication by *Journal of Hydrology*, Elsevier. It incorporates referee's comments but changes resulting from the publishing process, such as copyediting, structural formatting, may not be reflected in this document. The published version is available at: [DOI: <http://dx.doi.org/10.1016/j.jhydrol.2013.11.027>].

Downloaded on 09 Apr 2024 13:15:05 SGT

Figure List

Figure 1: Study area and location of rain gauges

Figure 2: The flowchart of study framework

Figure 3: MAPE values of objective function at various K values for single-site disaggregation at S24

Figure 4: Comparison of downscaled results at site S46 from (a1-d1) single-site GLM combined with KNN (S-G-K), and (a2-d2) multisite GLM. MAPE is based on the observed and average downscaled data

Figure 5: Statistical properties of disaggregated hourly rainfall data using KNN and HYETOS during the verification period at the stations S24 (denoted as 1) and S46 (denoted as 2). $MAPE_K$ = MAPE value based on KNN; $MAPE_H$ = MAPE level based on HYETOS.

Figure 6: Quantile-quantile plot between the observed and disaggregated data

Figure 7: Statistical properties of disaggregated rainfall at satellite station S24 from KNN and MuDRain. $MAPE_K$ = MAPE value based on KNN; $MAPE_M$ = MAPE level based on MuDRain.

Figure 8: Statistical properties of downscaled rainfall at S46 from GLM based on HadCM3 A2 scenario during 1980-2010. Solid line represents the observed data; dash line is the downscaled envelop based on 20 ensembles

Figure 9: Cross-correlation coefficients vs. distance for observed and downscaled rainfall. OBS = observed data; SIM = downscaled data; CC = correlation coefficient between observed data and average value of downscaled data.

Figure 10: Statistical properties of disaggregated rainfall at master station S46 using KNN.

The plot shows a comparison of the observed time series with envelop curves generated from 20 ensembles from GLM downscaled daily data

Figure 11: Statistical properties of disaggregated rainfall from multi-site disaggregation using MuDRain at satellite station S24

Figure 12: Cross-correlation coefficients of observed and disaggregated hourly data against distance in (a) February, (b) June, (c) September, and (d) December. OBS = observed data; SIM = disaggregated data; CC = correlation coefficient between observed data and average value of disaggregated data.

Figure 13: The mean and maximum hourly rainfall for the study region during baseline period (1980-2010) and future periods, including (a1 & a2) 2030s (2011-2040), (b1 & b2) 2050s (2041-2070) and (c1 & c2) 2080s (2071-2100).

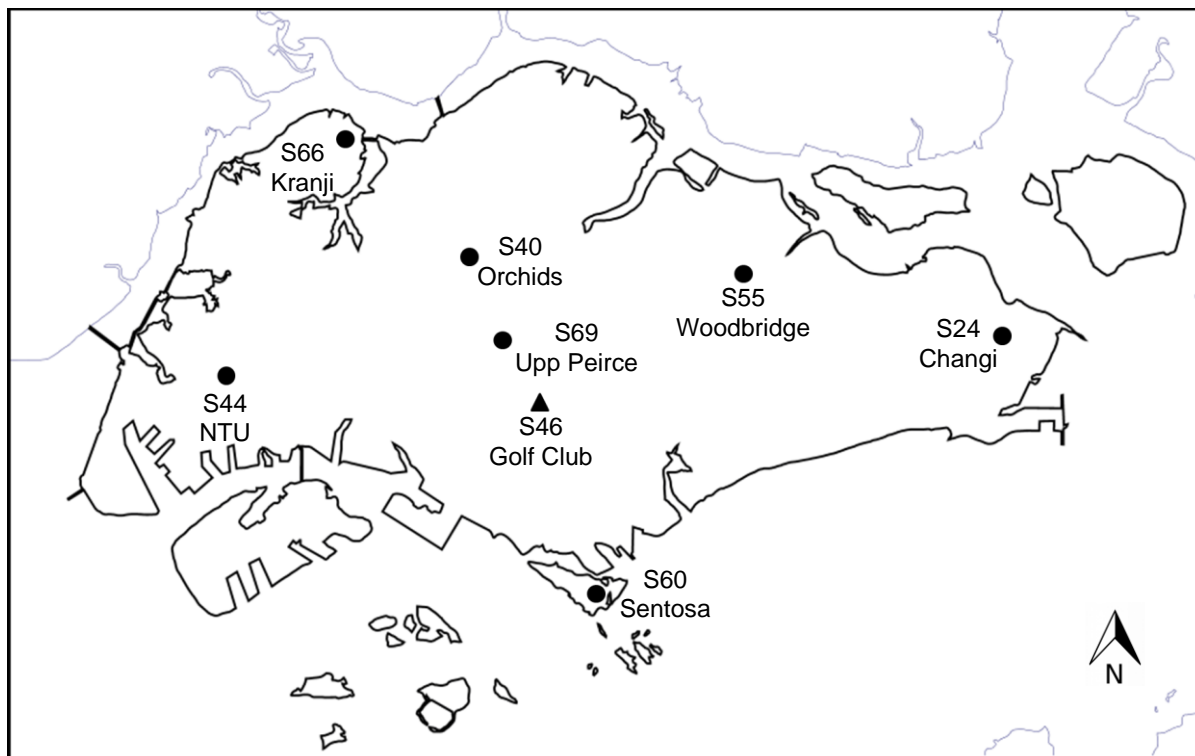


Figure 1: Study area and location of rain gauges.

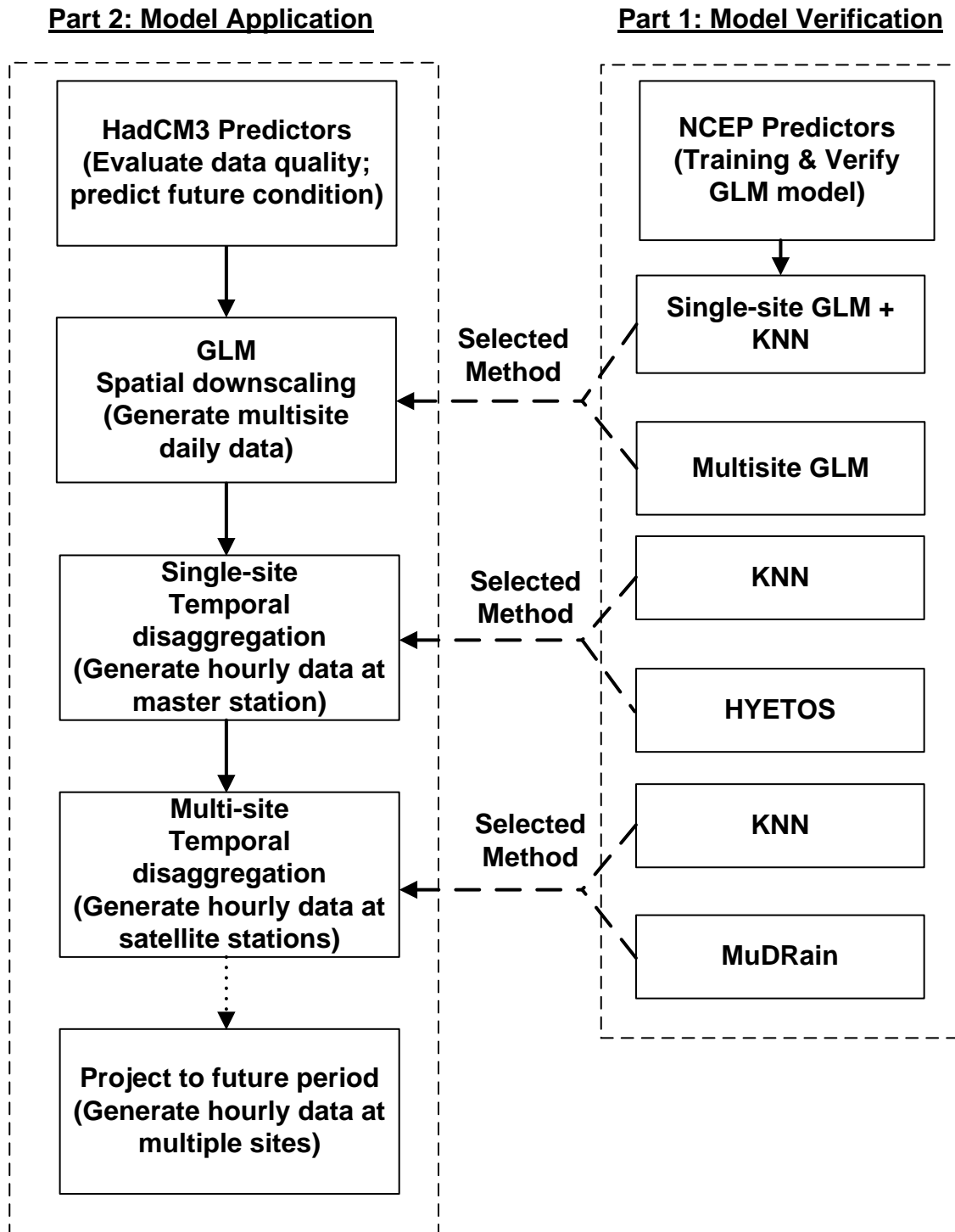


Figure 2: The flowchart of study framework.

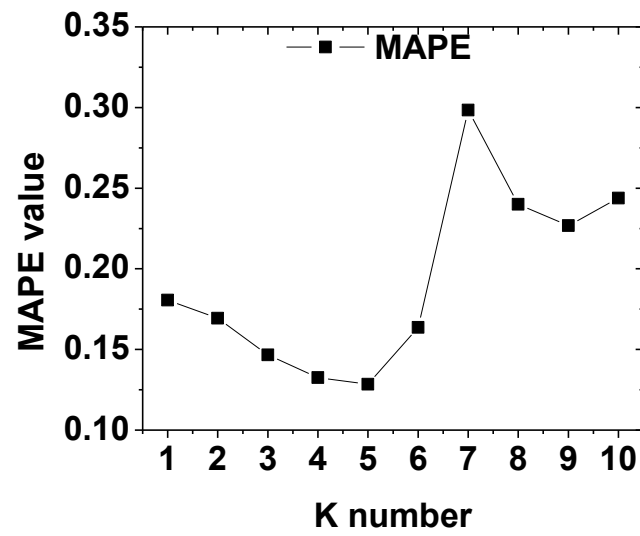


Figure 3: MAPE values of objective function at various K values for single-site disaggregation at S24.

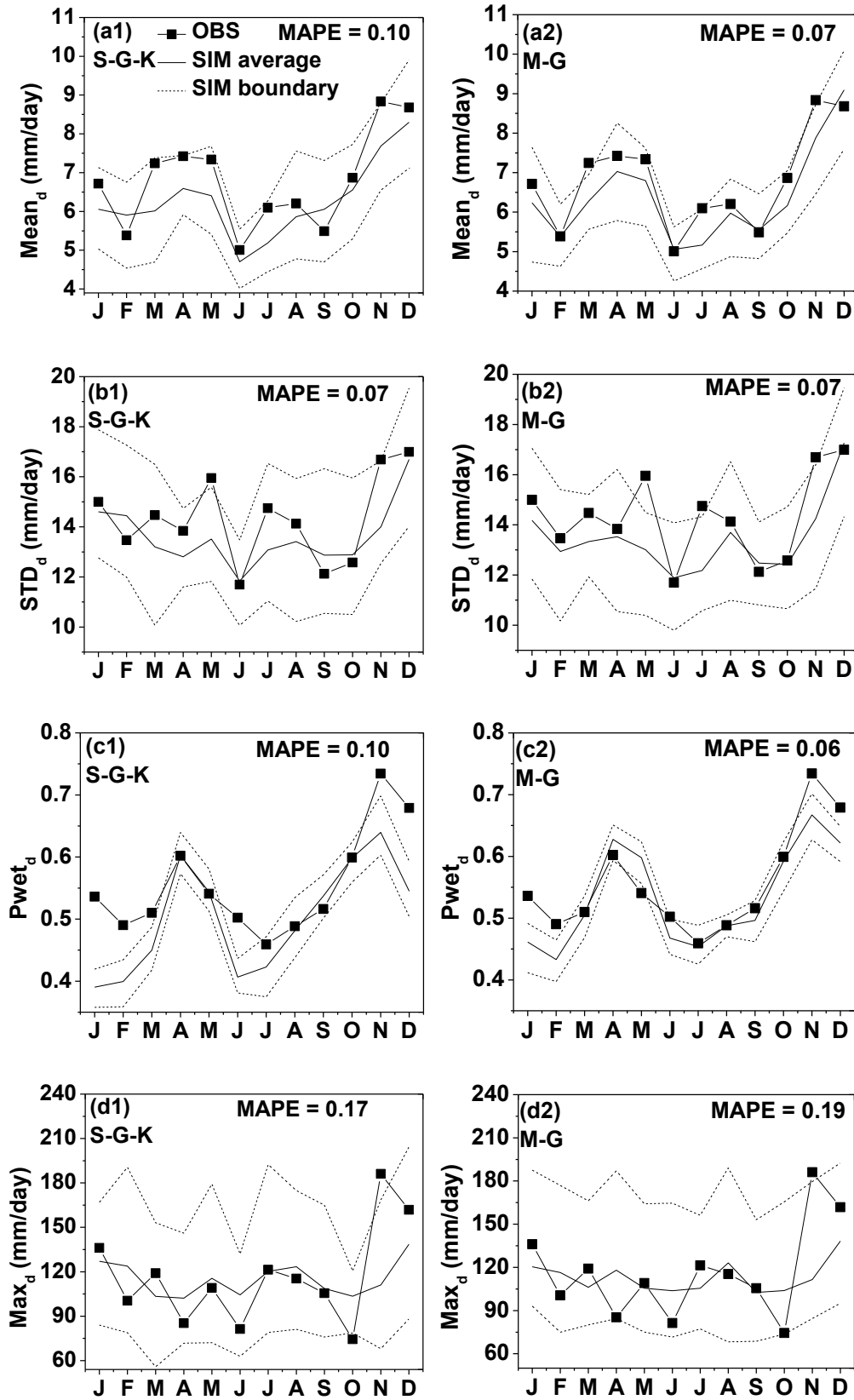


Figure 4: Comparison of downscaled results at site S46 from (a1-d1) single-site GLM combined with KNN (S-G-K), and (a2-d2) multisite GLM. MAPE is based on the observed and average downscaled data.

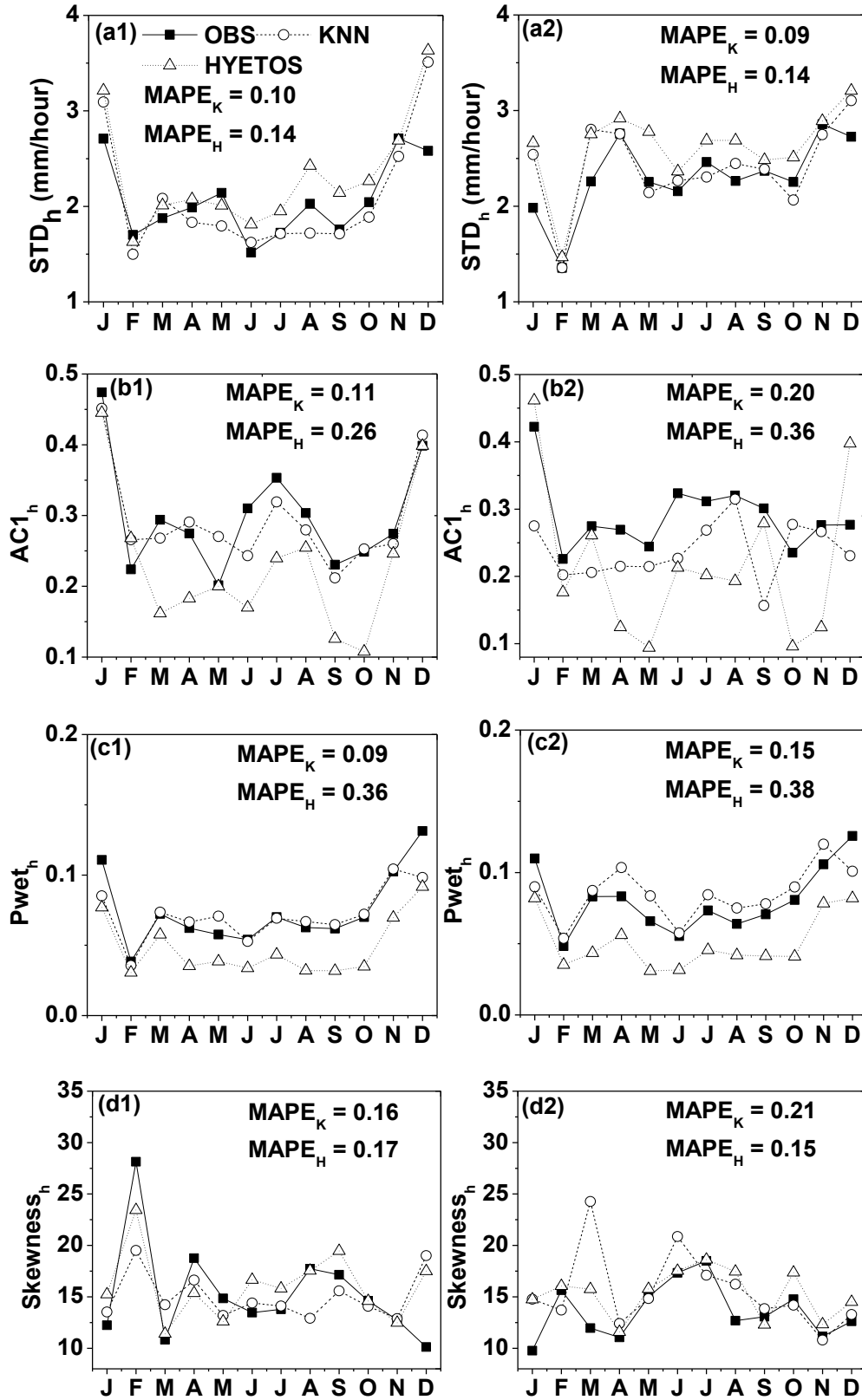


Figure 5: Statistical properties of disaggregated hourly rainfall data using KNN and HYETOS during the verification period at the stations S24 (denoted as 1) and S46 (denoted as 2). $MAPE_K$ = MAPE value based on KNN; $MAPE_H$ = MAPE level based on HYETOS.

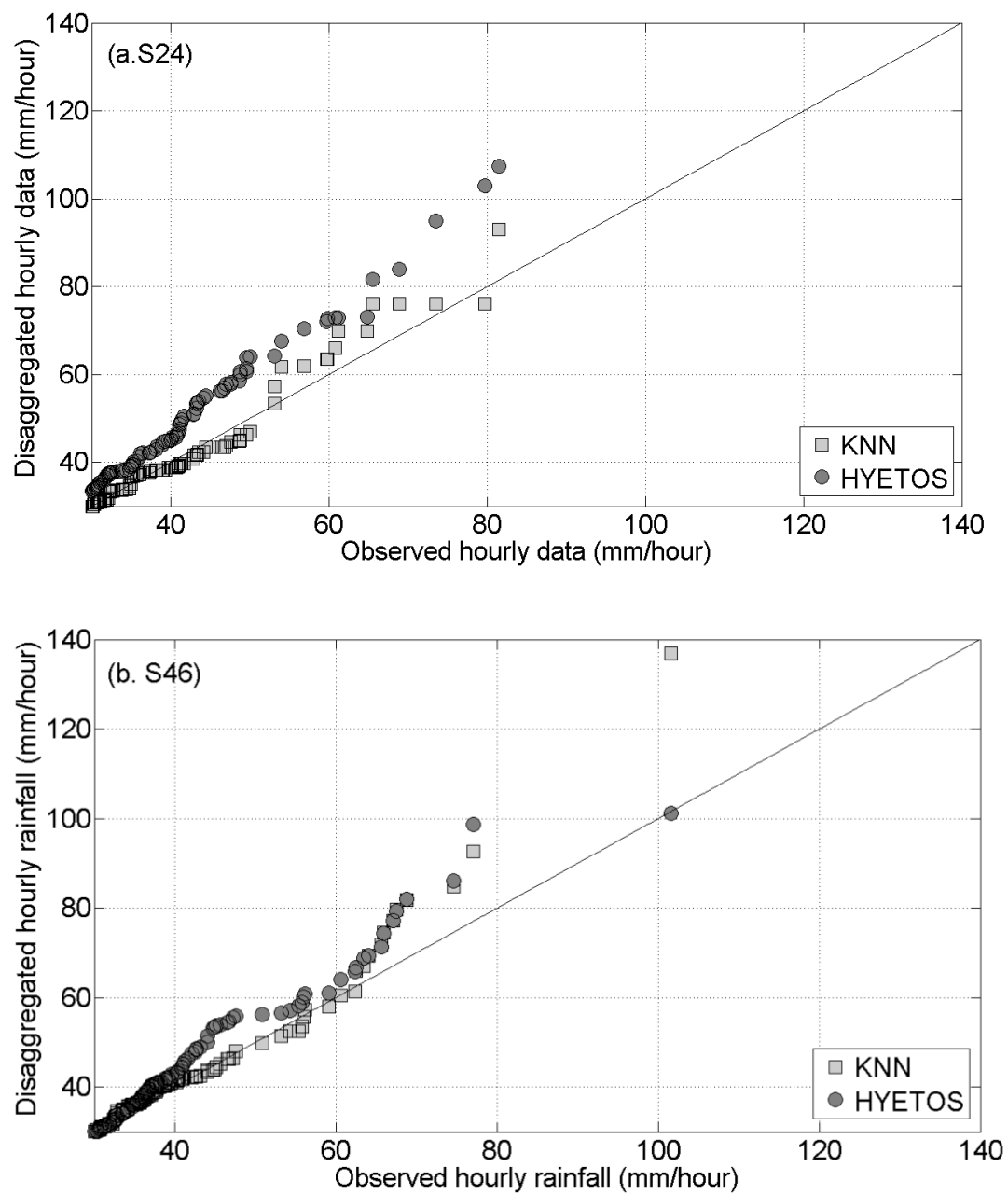


Figure 6: Quantile-quantile plot between the observed and disaggregated data.

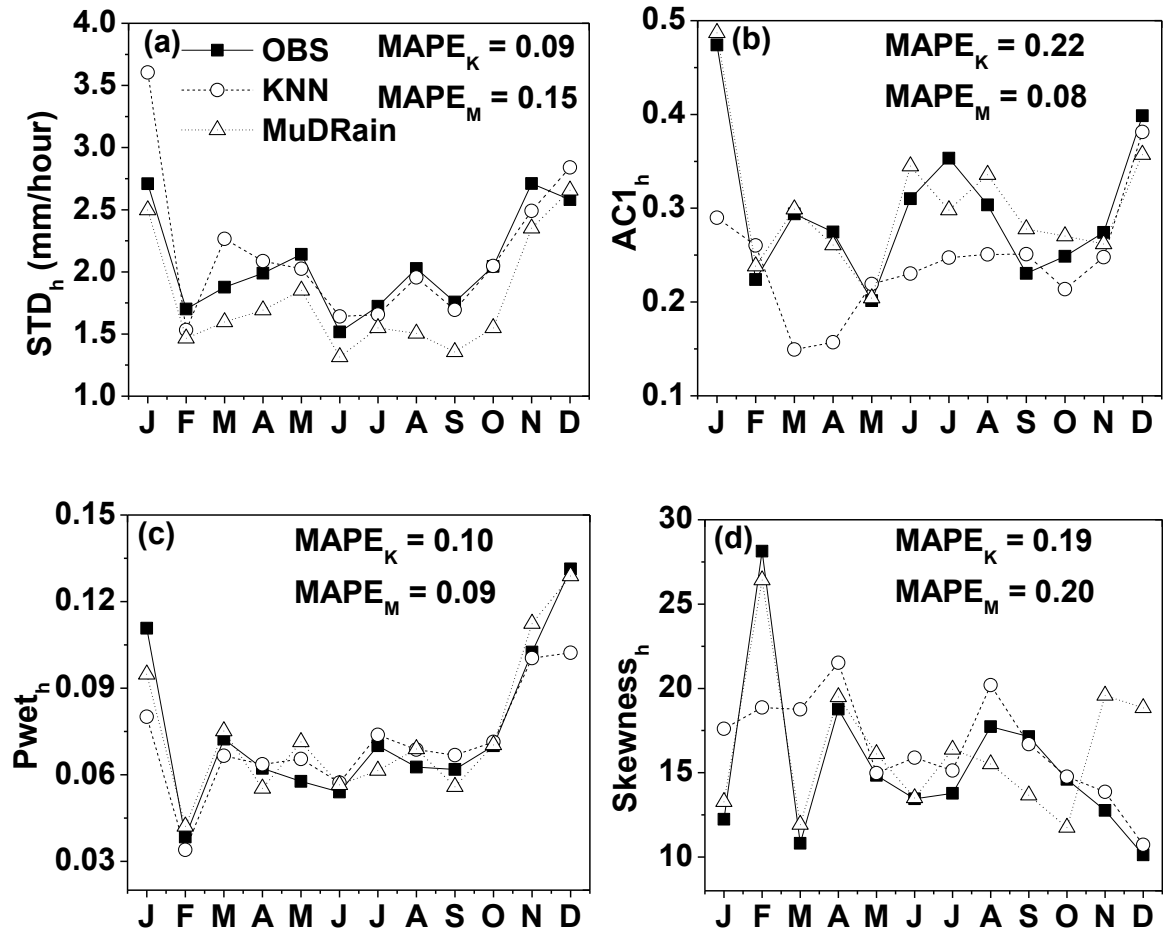


Figure 7: Statistical properties of disaggregated rainfall at satellite station S24 from KNN and MuDRain. $MAPE_K$ = MAPE value based on KNN; $MAPE_M$ = MAPE level based on MuDRain.

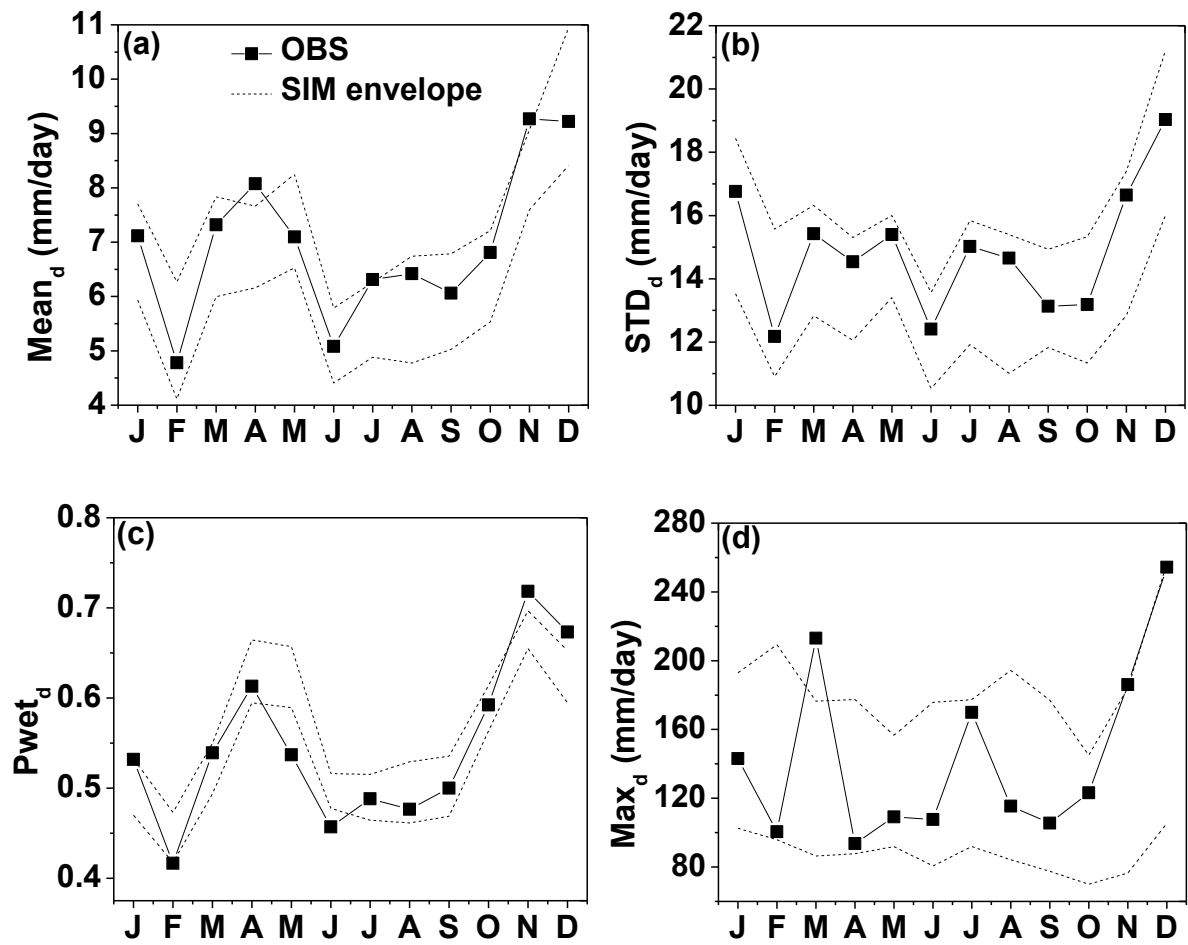


Figure 8: Statistical properties of downscaled rainfall at S46 from GLM based on HadCM3 A2 scenario during 1980-2010. Solid line represents the observed data; dash line is the downscaled envelop based on 20 ensembles.

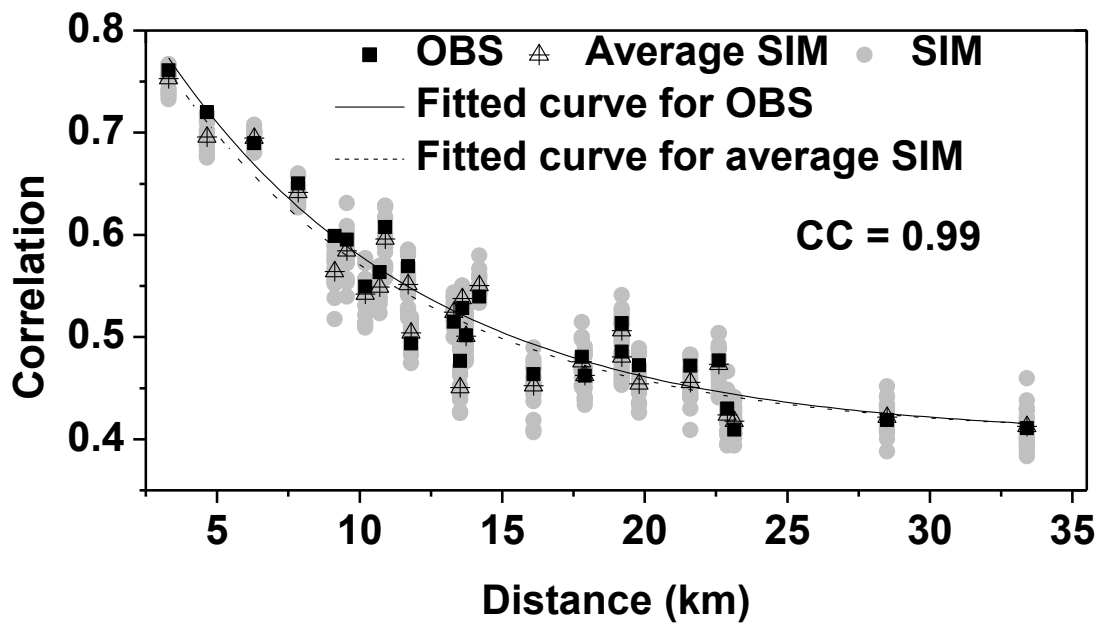


Figure 9: Cross-correlation coefficients vs. distance for observed and downscaled rainfall.

OBS = observed data; SIM = downscaled data; CC = correlation coefficient between observed data and average value of downscaled data.

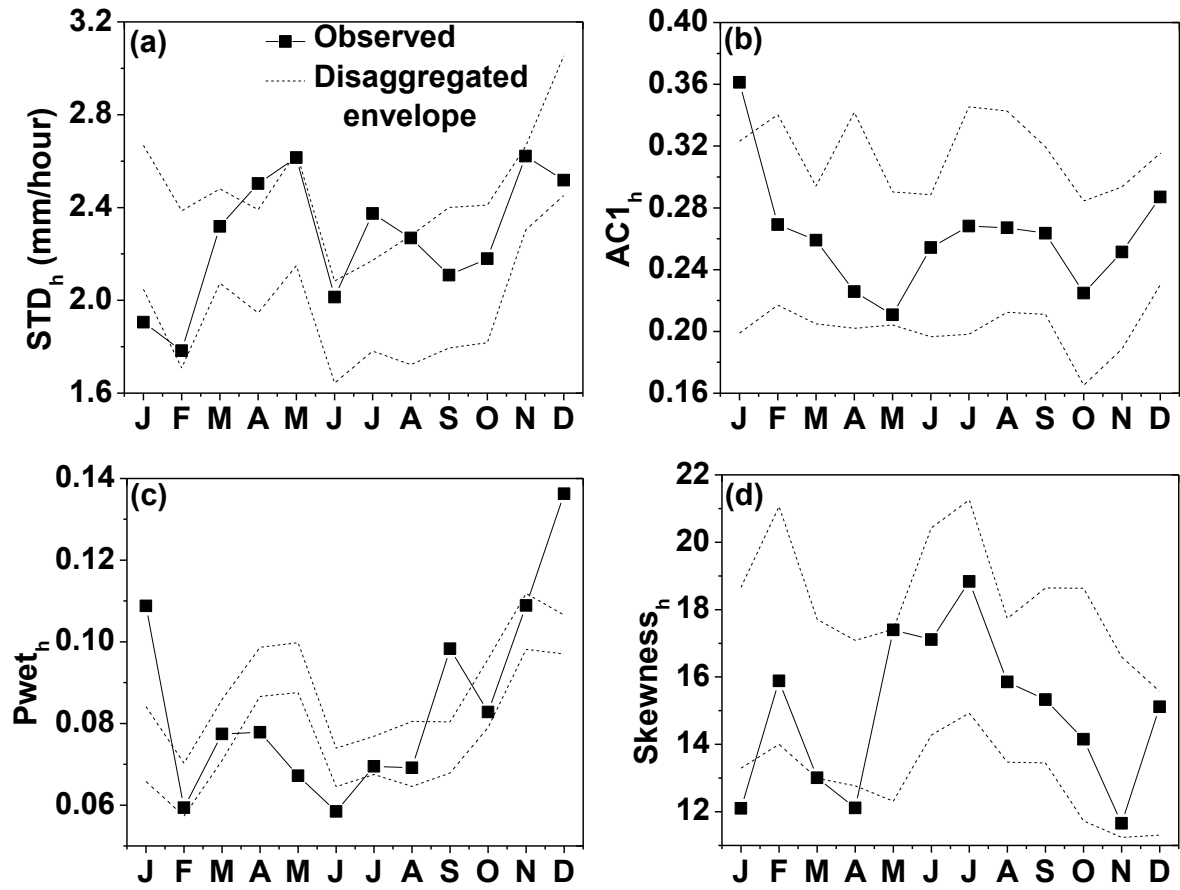


Figure 10: Statistical properties of disaggregated rainfall at master station S46 using KNN.

The plot shows a comparison of the observed time series with envelop curves generated from 20 ensembles from GLM downscaled daily data.

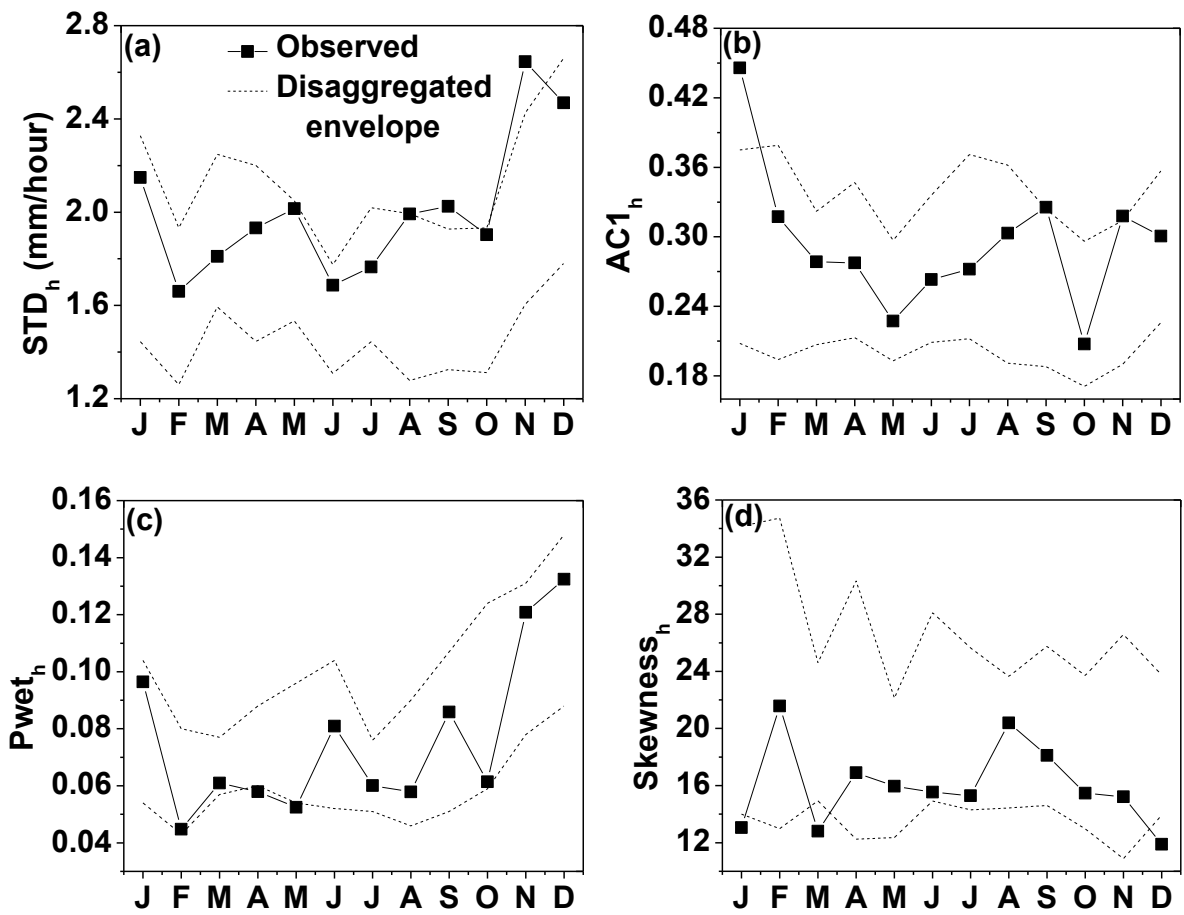


Figure 11: Statistical properties of disaggregated rainfall from multi-site disaggregation using MuDRain at satellite station S24.

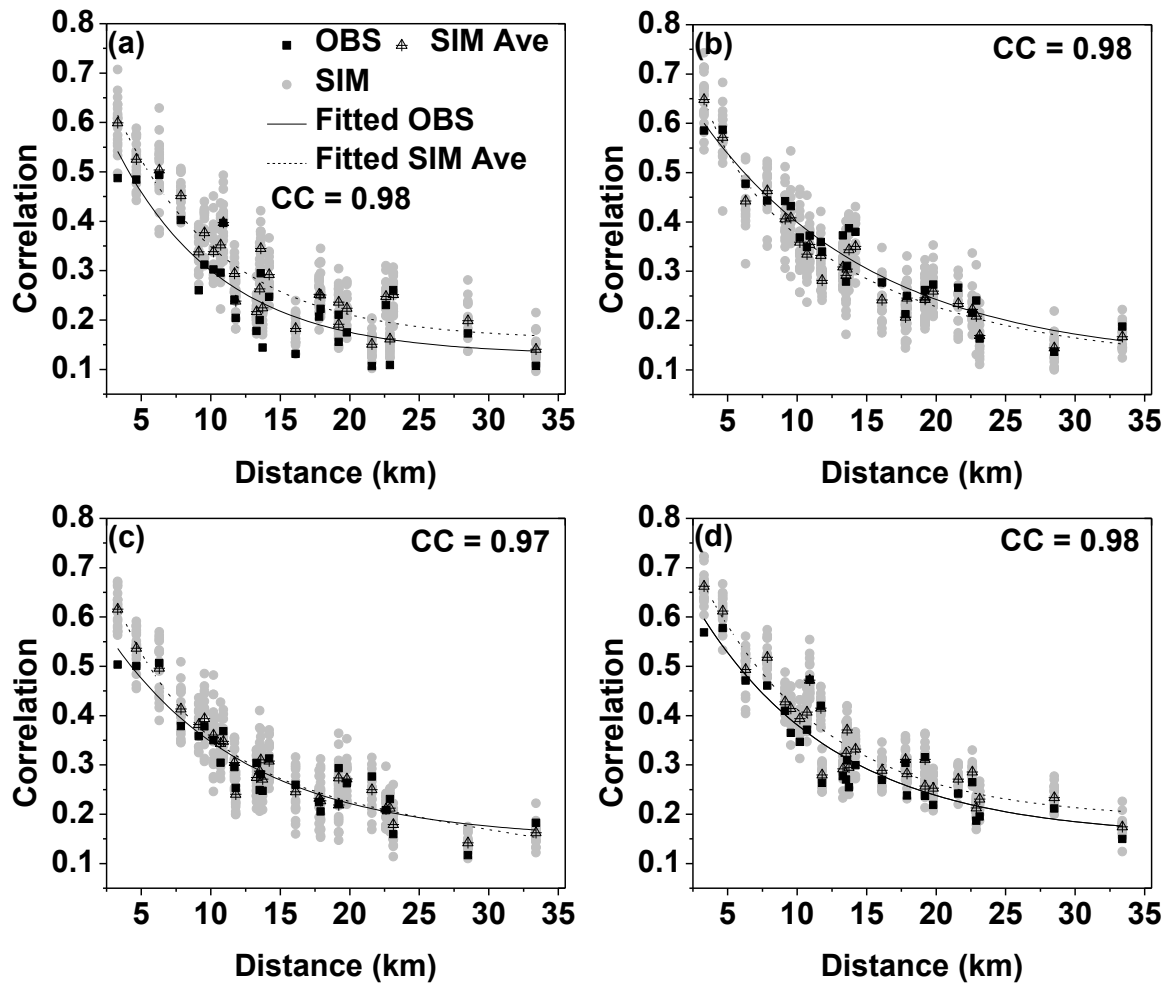


Figure 12: Cross-correlation coefficients of observed and disaggregated hourly data against distance in (a) February, (b) June, (c) September, and (d) December. OBS = observed data; SIM = disaggregated data; CC = correlation coefficient between observed data and average value of disaggregated data.

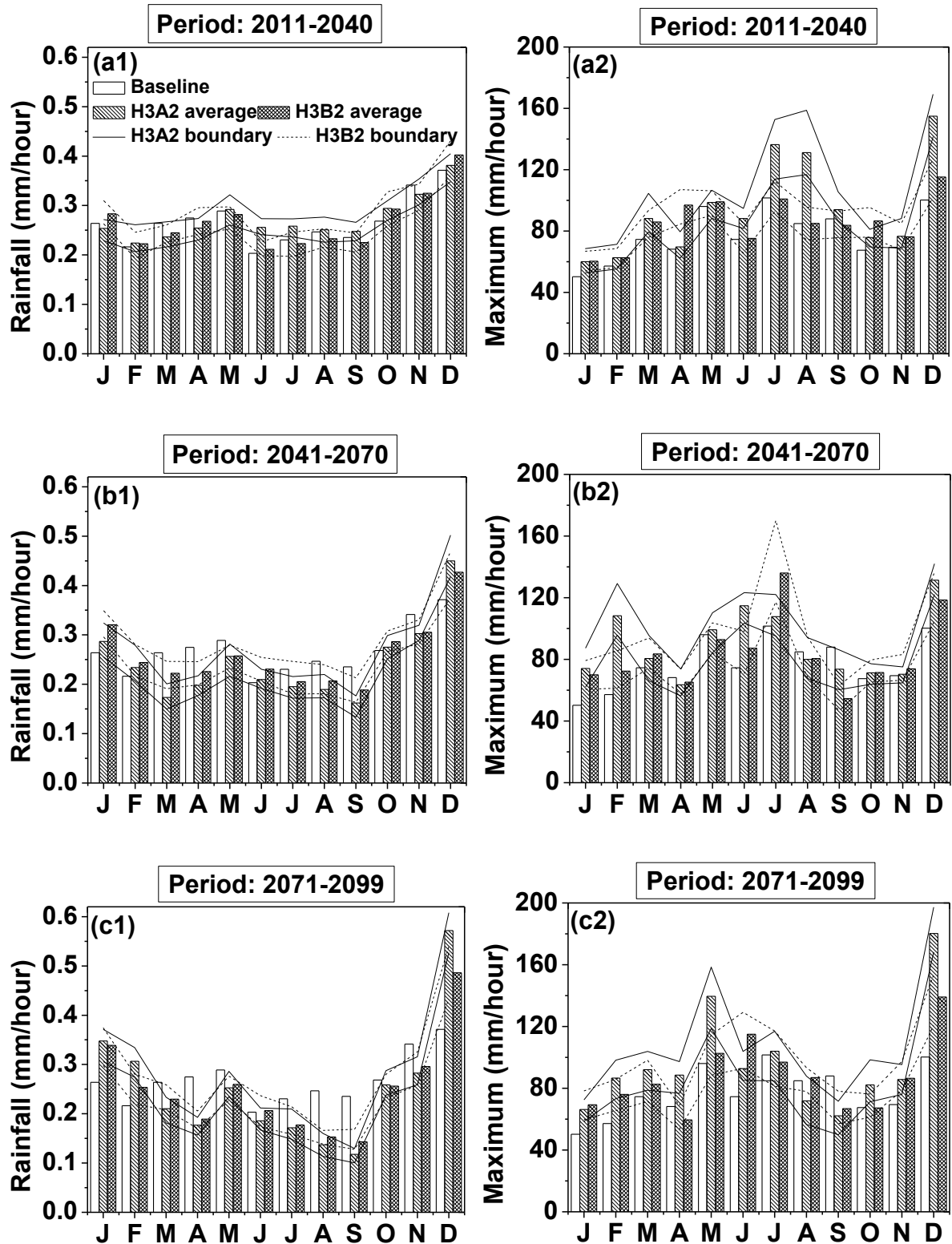


Figure 13: The mean and maximum hourly rainfall for the study region during baseline period (1980-2010) and future periods, including (a1 & a2) 2030s (2011-2040), (b1 & b2) 2050s (2041-2070) and (c1 & c2) 2080s (2071-2100).