

# Synthesis, structural studies and ligand influence on the stability of aryl-NHC stabilised trimethylaluminium complexes

Wu, Melissa M.; Gill, Arran M.; Lu, Yunpeng; Laura, Falivene; Li, Yongxin; Rakesh, Ganguly;  
Luigi, Cavallo; Felipe, García

2015

Wu, M. M., Gill, A. M., Lu, Y., Laura, F., Li, Y., Rakesh, G., et al. (2015). Synthesis, structural studies and ligand influence on the stability of aryl-NHC stabilised trimethylaluminium complexes. *Dalton Transactions*, 44(34), 15166-15174.

<https://hdl.handle.net/10356/82664>

<https://doi.org/10.1039/C5DT00079C>

---

This article is licensed under a Creative Commons Attribution 3.0 Unported Licence.

*Downloaded on 23 Jul 2024 00:31:27 SGT*

Cite this: *Dalton Trans.*, 2015, **44**, 15166

## Synthesis, structural studies and ligand influence on the stability of aryl-NHC stabilised trimethylaluminium complexes†

Melissa Wu, M,<sup>a</sup> Arran M. Gill,<sup>b</sup> Lu Yunpeng,<sup>a</sup> Laura Falivene,<sup>c</sup> Li Yongxin,<sup>a</sup> Rakesh Ganguly,<sup>a</sup> Luigi Cavallo<sup>c,d</sup> and Felipe García\*<sup>a</sup>

Treatment of a series of aromatic NHCs (IMes, SIMes, IPr and SIPr) with trimethylaluminium produced their corresponding Lewis acid–base adducts: IMes-AlMe<sub>3</sub> (**1**), SIMes-AlMe<sub>3</sub> (**2**), IPr-AlMe<sub>3</sub> (**3**), and SIPr-AlMe<sub>3</sub> (**4**). These complexes expand the few known examples of saturated NHC stabilised Group 13 complexes. Furthermore, compounds **1–4** show differential stability depending on the nature of the NHC ligand. Analyses of topographic steric maps and NHC %V<sub>Bur</sub> were used to explain these differences. All the compounds have been fully characterised by multinuclear NMR spectroscopy, IR and single crystal X-ray analysis together with computational studies.

Received 8th January 2015,  
Accepted 13th February 2015

DOI: 10.1039/c5dt00079c

www.rsc.org/dalton

## Introduction

Since the discovery of the first stable N-heterocyclic carbene (NHC) by Arduengo in 1991,<sup>1</sup> these compounds have been extensively used as ligands in the chemistry of transition metals.<sup>2,3</sup> Similarly to their phosphine counterparts, transition metal complexes containing various finely tuned NHC ligands have been used in a wide range of catalytic processes.<sup>2–4</sup> As NHCs are highly nucleophilic Lewis bases, they have also been used to stabilise many Group 13 complexes.<sup>5,6</sup> Our interest in NHC-Group 13 complexes arises from the discovery that their properties and reactivities have not been thoroughly studied. However, their potential has been demonstrated for a diverse range of applications; for example, sterically demanding NHC ligands have been used to synthesise neutral B–B double and triple bonded species,<sup>7</sup> as well as stabilising a neutral aromatic Ga<sub>6</sub> octahedron cluster.<sup>8</sup> In addition, NHCs that do not form stable Lewis acid–base adducts, forming frustrated Lewis pair (FLP) systems, have shown interesting properties in the acti-

vation of small molecules.<sup>9</sup> However, there is still much to be explored in terms of their properties and reactivity. The majority of NHC–aluminium complexes reported comprise hydride and halide groups (AlX<sub>n</sub>H<sub>3–n</sub>, n = 0, 1, 2).<sup>5</sup> In contrast, there are only a few examples of aluminium alkyl complexes.<sup>6</sup> In particular, in the case of the simplest alkyl substituent, trimethylaluminium, only five complexes have been fully characterised: IiPrMe (IiPrMe = 1,3-isopropyl-4,5-dimethyl-imidazol-2-ylidene, **A**);<sup>6h</sup> ItBu (ItBu = 1,3-di-*tert*-butylimidazol-2-ylidene, **B**);<sup>6d</sup> IMes (IMes = 1,3-bis(2,4,6-trimethylphenyl)imidazol-2-ylidene, **C**);<sup>6e</sup> a bidentate amino ligand (**D**)<sup>6e</sup> and a chiral imidazolium sulfonate (**E**)<sup>6f</sup> (Fig. 1). Furthermore, to the best of our knowledge, there are only a few known examples of other saturated NHC stabilised Group 13 metals that have been fully characterised.<sup>5b</sup> Here, we report the synthesis, characterisation and theoretical studies of a series of NHC aluminium alkyl complexes.

## Results and discussion

## Synthesis of complexes 1–4

The general synthetic route for the synthesis of target complexes, described in Scheme 1,<sup>6e,h</sup> involved the treatment of 1 equiv. of carbene (IMes, SIMes, IPr or SIPr) with trimethylaluminium (1 M in toluene), resulting in the isolation of their respective adducts: IMes-AlMe<sub>3</sub> (**1**); SIMes-AlMe<sub>3</sub> (**2**); IPr-AlMe<sub>3</sub> (**3**) and SIPr-AlMe<sub>3</sub> (**4**). Complex **1** was previously reported by Ong *et al.* using an analogous synthetic route,<sup>6e</sup> and has been included in this report to maintain the rigour of our studies (Fig. 2).

<sup>a</sup>School of Physical and Mathematical Sciences, Division of Chemistry and Biological Chemistry, Nanyang Technological University, 21 Nanyang Link, Singapore 637371.

E-mail: Fgarcia@ntu.edu.sg; Fax: (+65) 67911961

<sup>b</sup>Chemistry, Faculty of Natural and Environmental Sciences, University of Southampton, Highfield Southampton, SO17 1BJ, UK

<sup>c</sup>King Abdullah University of Science and Technology, Building 9, Level 4, Room #4358, Thuwal, 23955-6900, Saudi Arabia

<sup>d</sup>Dipartimento di chimica, Univerità di Salerno, Via Ponte don Melillo, 84054 Fisciano, Italia

† Electronic supplementary information (ESI) available: Experimental and spectral data, and crystallographic data of **1–5**. CCDC 1020090–1020094. For ESI and crystallographic data in CIF or other electronic format see DOI: 10.1039/c5dt00079c



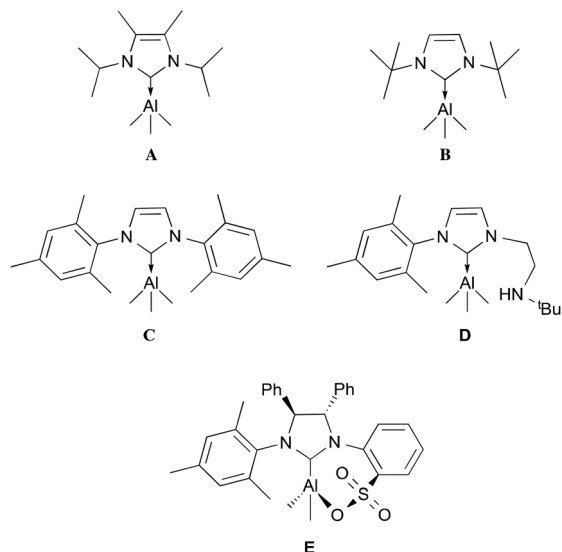
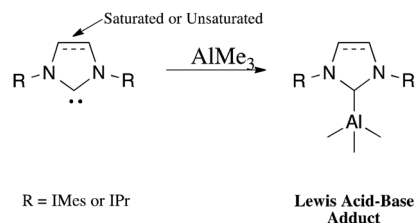


Fig. 1 Literature reported N-heterocyclic trimethylaluminium complexes (A,<sup>6h</sup> B,<sup>6d</sup> C,<sup>6e</sup> D<sup>6e</sup> and E<sup>6f</sup>).



Scheme 1 Synthetic strategy for the NHC adducts.

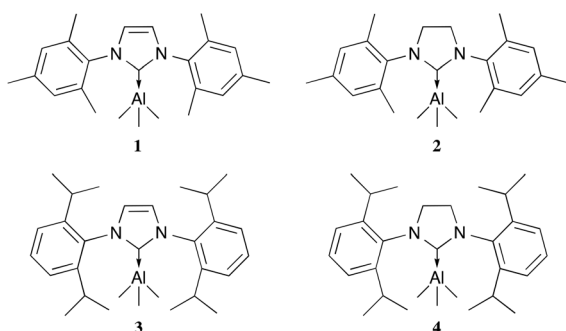


Fig. 2 NHC trimethylaluminium complexes synthesised. IMes-AlMe<sub>3</sub> (1), SIMes-AlMe<sub>3</sub> (2), IPr-AlMe<sub>3</sub> (3) and SIPr-AlMe<sub>3</sub> (4).

Compounds 1–4 are highly air- and moisture-sensitive; traces of decomposition were consistently observed during their characterisation, making their characterisation tedious. This was particularly pronounced in the case of complexes 3 and 4 where peaks corresponding to the imidazolylidenes were always present on the <sup>1</sup>H and <sup>13</sup>C NMR spectra. Moreover, this was also observed in the solid state, where argon-gas-stored samples of 3 and 4 slowly decomposed to imidazolylidene and imidazolynylidene respectively and other unidentified side-products at room temperature (see ESI†), whereas solids 1 and 2

can be stored over long periods of time without any observable decomposition.

### Crystallographic studies of complexes 1–4

Single-crystal X-ray structures of complexes 1–4 are shown in Fig. 3–6. Complexes 2 and 3 crystallised out as two crystallographically independent but chemically equivalent molecules; hence only one molecule will be described herein (Table 1).

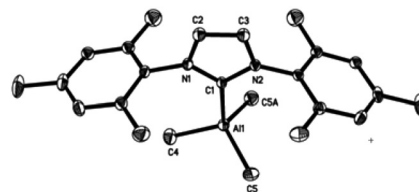


Fig. 3 Molecular structure of IMes-AlMe<sub>3</sub> (1). Thermal ellipsoids are drawn at the 50% probability level. Hydrogen atoms have been omitted for clarity. Selected bond lengths [Å] and angles [°] for 1: Al(1)–C(1) 2.098(2), Al(1)–C(4) 1.978(2), Al(1)–C(5) 1.991(1), C(1)–N(1) 1.365(2), C(1)–N(2) 1.364(2), C(2)–N(1) 1.385(2), C(3)–N(2) 1.382(2), C(2)–C(3) 1.353(2), C(4)–Al(1)–C(5) 110.8(1), C(4)–Al(1)–C(1) 108.7(1), C(5)–Al(1)–C(5A) 114.4(1), C(5)–Al(1)–C(1) 105.8(1), N(1)–C(1)–N(2) 103.5.

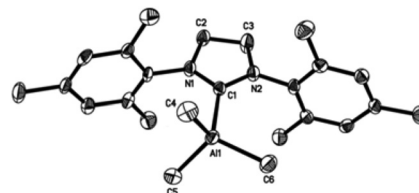


Fig. 4 Molecular structure of SIMes-AlMe<sub>3</sub> (2). Thermal ellipsoids are drawn at the 50% probability level. Hydrogen atoms were omitted for clarity. Selected bond lengths [Å] and angles [°] for 2: Al(1)–C(1) 2.112(6), Al(1)–C(4), 1.984(6), Al(1)–C(5) 1.994(7), Al(1)–C(6) 1.983(6), C(1)–N(1) 1.341(7), C(1)–N(2) 1.343(7), C(2)–N(1) 1.477(7), C(3)–N(2) 1.474(7), C(2)–C(3) 1.534(8), C(4)–Al(1)–C(5) 110.7(3), C(4)–Al(1)–C(1) 105.7(3), C(4)–Al(1)–C(6) 112.3(3), C(5)–Al(1)–C(6) 111.8(3), C(5)–Al(1)–C(1) 107.6(3), C(6)–Al(1)–C(1) 108.4(2), N(1)–C(1)–N(2) 107.3(5).

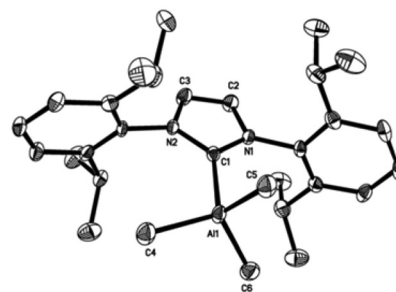
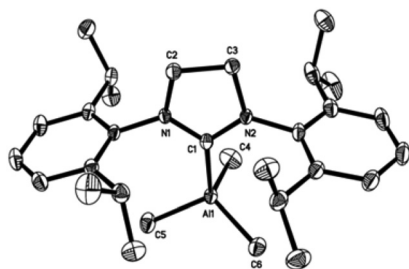


Fig. 5 Molecular structure of IPr-AlMe<sub>3</sub> (3). Thermal ellipsoids are drawn at the 50% probability level. Hydrogen atoms were omitted for clarity. Selected bond lengths [Å] and angles [°] for 3: Al(1)–C(1) 2.103(3), Al(1)–C(4) 1.992(3), Al(1)–C(5) 1.994(3), Al(1)–C(6) 1.994(3), C(1)–N(1) 1.370(4), C(1)–N(2) 1.370(4), C(2)–N(1) 1.387(4), C(3)–N(2) 1.385(4), C(2)–C(3) 1.351(4), C(4)–Al(1)–C(5) 111.5(1), C(4)–Al(1)–C(1) 109.6(1), C(4)–Al(1)–C(6) 111.3(1), C(5)–Al(1)–C(6) 113.6(1), C(5)–Al(1)–C(1) 104.7(1), C(6)–Al(1)–C(1) 105.7(1), N(1)–C(1)–N(2) 103.1(2).





**Fig. 6** Molecular structure SIPr-AlMe<sub>3</sub> (4). Thermal ellipsoids are drawn at the 50% probability level. Hydrogen atoms were omitted for clarity. Selected bond lengths [Å] and angles [°] for 4: Al(1)–C(1) 2.127(2), Al(1)–C(4) 1.986(3), Al(1)–C(5) 1.992(2), Al(1)–C(6) 1.980(2), C(1)–N(1) 1.346(2), C(1)–N(2) 1.345(2), C(2)–N(1) 1.477(2), C(3)–N(2) 1.483(2), C(2)–C(3) 1.521(3), C(4)–Al(1)–C(5) 109.4(1), C(4)–Al(1)–C(1) 100.7(1), C(4)–Al(1)–C(6) 114.0(1), C(5)–Al(1)–C(6) 111.5(1), C(5)–Al(1)–C(1) 110.9(1), C(6)–Al(1)–C(1) 109.5(1), N(1)–C(1)–N(2) 107.1(1).

**Table 1** Al–C<sub>carbene</sub> bond length

Entry	Complex	Al–C <sub>carbene</sub> [Å]
1	IMes·AlMe <sub>3</sub> (1)	2.098(2)
2	SIMes·AlMe <sub>3</sub> (2)	2.112(6)
3	IPr·AlMe <sub>3</sub> (3)	2.103(3)
4	SIPr·AlMe <sub>3</sub> (4)	2.127(2)
5	<b>A</b>	2.124(6)
6	<b>B</b>	2.162(2)
7	<b>C</b>	2.097(2)
8	<b>D</b>	2.074(2)
9	<b>E</b>	2.078(3)
10	IMes·AlH <sub>3</sub> <sup>5f</sup>	2.034(3)
11	IMes·AlCl <sub>3</sub> <sup>5h</sup>	2.017(2)
12	IPr·AlH <sub>3</sub> <sup>5i</sup>	2.056(2)
13	IPr·AlI <sub>3</sub> <sup>5g</sup>	2.031(2)

Compounds **1–4** adopt a distorted tetrahedral geometry at the Al centre, with Al–C<sub>carbene</sub> bond lengths ranging from 2.098 to 2.127 Å, which are consistent with previously reported trimethylaluminium complexes (*cf.* 2.124(6) Å,<sup>6h</sup> 2.162(2) Å,<sup>6d</sup> 2.097(2) Å,<sup>6e</sup> 2.074(2) Å<sup>6e</sup> and 2.078(3) Å<sup>6f</sup> for **A–E** respectively). Interestingly, the Al–C<sub>carbene</sub> bond distance of SIPr (**4**) was similar to the less sterically bulky IiPrMe (**A**) (2.127(2) and 2.124(6) Å respectively). Moreover, Huynh *et al.* using an NHC-NMR spectroscopic probe reported that saturated NHC (sNHC) moieties are marginally more basic (*i.e.*, stronger  $\sigma$ -donors) than their unsaturated (uNHC) counterparts (decreasing  $\sigma$ -donor strength SIPr  $\sim$  SIMes > IPr > IMes). In our case the <sup>1</sup>H NMR chemical shift of the methyl groups on the aluminium centre also supports Huynh's observations. In addition, a slight bond lengthening consistent with this property is expected for **2** and **4** with respect to **1** and **3** (containing sNHC and uNHC respectively).<sup>4g,10,11</sup> However, clear bond lengthening is only observed between **3** and **4**, since the difference between **1** and **2** could be attributed to statistical error range (3 $\sigma$ ). Complex **B** (*i.e.*, ItBu) has the longest reported Al–C<sub>carbene</sub> bond length reported to date, mainly due to additional steric hindrance introduced by the large *tert*-butyl groups (*vide infra*), 36.9%V<sub>Bur</sub>, resulting in the complex being

susceptible towards isomerization or decomposition depending on the experimental conditions (solvent dependent).<sup>6d</sup>

### Spectroscopic studies of complexes 1–4

The <sup>1</sup>H and <sup>13</sup>C NMR spectra obtained for complexes **1–4** were consistent with the low temperature X-ray crystallographic analysis. The <sup>1</sup>H and <sup>13</sup>C NMR spectra for these compounds display singlets at  $\delta_{\text{H}}$  –0.78 to –0.91 and at  $\delta_{\text{C}}$  –7 ppm respectively. This is indicative of the presence of methyl groups on the aluminium centre. The IR spectra of these complexes show relatively strong stretching signals at around 620 cm<sup>–1</sup>, confirming the presence of these methyl groups.<sup>12</sup> Moreover, the formation of the complex is further indicated by the upfield shifting of the C<sub>carbene</sub> signal that is consistent with a carbene-metal bond (Table 2).<sup>13</sup>

The optimised geometrical parameters, bond lengths and angles for complexes **1–4** calculated using PBE0/6-311G(d,p) model chemistry are in good agreement with the experimental values obtained from the single-crystal X-ray diffraction studies. Furthermore, the calculated <sup>1</sup>H and <sup>13</sup>C NMR spectra using B972/6-311+G(2d,p) on the optimised geometries were consistent with the experimental data obtained, which provided further validation of the identity of the complexes synthesised (see ESI†).

### Lewis acid–Lewis base properties

Comparison between NHCs and phosphines has been carried out to assess the relative donor abilities (Lewis basicity) of this important family of ligands. For this reason, NHC–Al complexes **1–4** were compared to selected phosphine–Al counterparts. Similarly to what Barron *et al.* reported with trimethylaluminium phosphine complexes,<sup>14</sup> the lengths of the Al–C bonds increase (*cf.* 1.956 Å for AlMe<sub>3</sub>, 1.985 Å, 1.987 Å 1.993 Å and 1.986 Å for compounds **1–4** respectively) and the C–Al–C angles decrease (*ca.* 120° for AlMe<sub>3</sub> and respective average angles 112.6°, 111.6°, 112.1°, 111.7° for **1–4**) upon coordination to the NHC. Both changes indicate increased p-character in the Al–C bonds on changing from planar to tetrahedral geometries. The greater distortion from planarity observed for NHC complexes compared with their phosphine counterparts (see Table 3), indicates higher Lewis basicity of the former. This is further evidenced by the <sup>1</sup>H NMR chemical shift of the methyl groups on the aluminium centre. Complexes **1–4** show signals at higher fields ( $\delta_{\text{H}}$  –0.78 to –0.91) than previously reported basic trimethylaluminium phosphine

**Table 2** Selected <sup>1</sup>H and <sup>13</sup>C NMR chemical shifts for complexes **1–4**

Complex	<sup>1</sup> H [AlCH <sub>3</sub> ] (ppm)	<sup>13</sup> C [AlC <sub>carbene</sub> ] (ppm)	<sup>13</sup> C [C <sub>carbene</sub> ] <sup>a</sup> (ppm)
<b>1</b>	–0.78	178.5	219.4
<b>2</b>	–0.86	202.3	243.8
<b>3</b>	–0.86	181.1	220.4
<b>4</b>	–0.91	205.2	244.0

<sup>a</sup> <sup>13</sup>C chemical shift obtained from ref. 13.



**Table 3** Average Al–Me bond length and C–Al–C angles for selected complexes

Complex	Al–Me <sup>a</sup> [Å]	C–Al–C <sup>a</sup> [°]	<sup>1</sup> H [AlCH <sub>3</sub> ] (ppm)
<b>1</b>	1.985	112.6	−0.78
<b>2</b>	1.987	111.6	−0.86
<b>3</b>	1.993	112.1	−0.86
<b>4</b>	1.986	111.7	−0.91
AlMe <sub>3</sub> <sup>16,17</sup>	1.956	123.2	−0.35
Me <sub>3</sub> P·AlMe <sub>3</sub> <sup>14</sup>	1.973	117.1	−0.41
Ph <sub>3</sub> P·AlMe <sub>3</sub> <sup>14,18</sup>	1.981	116.6	−0.09
( <i>o</i> -tolyl) <sub>3</sub> P·AlMe <sub>3</sub> <sup>14</sup>	1.874	113.9	−0.31

<sup>a</sup> Average values were taken for both bond lengths and angles.

complexes (*cf.*  $\delta_{\text{H}}$  −0.02–0.41)<sup>15</sup> indicative of a stronger donation from the NHC to the aluminium center (see ESI† and Table 3).

The Lewis acidity of trihalide and trihydride aluminium centres within NHC–aluminium complexes has been previously discussed in the literature.<sup>5a,d</sup> In the case of complexes **1–4**, the trimethylaluminium moiety is found to be a poorer Lewis acid as compared to hydrides and halides. This was evident from the carbenic carbon to aluminium bond distances observed in the IMes (**1**) and IPr (**3**) complexes. The Lewis acidity trend, AlMe<sub>3</sub> < AlH<sub>3</sub> < AlX<sub>3</sub>, can be illustrated by Al–C<sub>carbene</sub> bond distances: 2.034(3) Å for IMes·AlH<sub>3</sub>,<sup>5t</sup> 2.017(2) Å for IMes·AlCl<sub>3</sub>,<sup>5h</sup> 2.056(2) Å for IPr·AlH<sub>3</sub>,<sup>5n</sup> and 2.031(2) Å for IPr·AlI<sub>3</sub>.<sup>5g</sup> The same tendency was also observed in the mixed alane gallane halide complexes.<sup>5d,f</sup> In the case of indium and thallium complexes, Jones *et al.* also observed the same Lewis acidic behaviour during the synthesis of bis-NHC (*i.e.*, NHC–(CH<sub>2</sub>)<sub>2</sub>–NHC) group 13 complexes. Their studies showed monometallic pentacoordinate indium and thallium halide complexes containing chelating bis-NHC moieties, whereas hydride counterparts formed monodentate tetra-coordinate bimetallic species (*i.e.*, R<sub>3</sub>E←NHC–(CH<sub>2</sub>)<sub>2</sub>–NHC→ER<sub>3</sub>) indicating the higher Lewis acidity of the former.<sup>5m,o,q</sup> Furthermore, the relative Lewis acidity can also be assessed using <sup>13</sup>C NMR spectroscopy, despite the fact that many Al–C<sub>carbene</sub> signals have not been reported in the literature due to the quadrupolar nature of the aluminium metal centre to which they are attached. Nevertheless, the chemical shifts observed for complexes **1–4** show that trimethylaluminium is a poorer electron acceptor compared with AlH<sub>3</sub> and AlX<sub>3</sub> since the corresponding <sup>13</sup>C NMR signals for Al–C<sub>carbene</sub>, shown in Table 2, were more downfield shifted with respect to hydride and halide counterparts (Al–C<sub>carbene</sub> signals at  $\delta_{\text{C}}$  174.3 for ItBu (**B**),<sup>6d</sup>  $\delta_{\text{C}}$  175.3 for IMes·AlH<sub>3</sub>,<sup>5t</sup> 153.9 for IMes·AlI<sub>3</sub>, and  $\delta_{\text{C}}$  153.3 for IPr·AlI<sub>3</sub><sup>5g</sup>).

### Stability studies

Unstable NHC–AlMe<sub>3</sub> complexes have previously been reported; for example, the *tert*-butyl NHC complex **B** isomerised to an ‘abnormal’ NHC–AlMe<sub>3</sub> species in THF or toluene.<sup>6d</sup> We will use complex **B** as a benchmark throughout our comparative studies. Since the isomerization/decomposition of

**Table 4** Al–C<sub>carbene</sub> bond lengths, %V<sub>Bur</sub> and dissociation energies for selected complexes

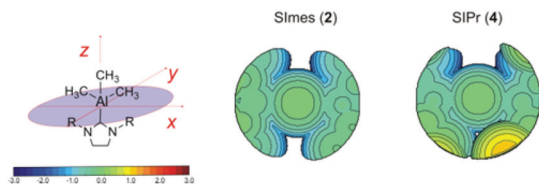
Entry	Complex	Al–C <sub>carbene</sub> [Å]	%V <sub>Bur</sub> R = X-ray	%V <sub>Bur</sub> R = 2.0 Å	E <sub>diss</sub> <sup>a</sup> (kJ mol <sup>−1</sup> )
<b>1</b>	IMes·AlMe <sub>3</sub> ( <b>1</b> )	2.098(2)	31.7	33.7	114.47
<b>2</b>	SIMes·AlMe <sub>3</sub> ( <b>2</b> )	2.112(6)	32.0	34.1	104.76
<b>3</b>	IPr·AlMe <sub>3</sub> ( <b>3</b> )	2.103(3)	34.2	36.2	97.14
<b>4</b>	SIPr·AlMe <sub>3</sub> ( <b>4</b> )	2.127(2)	36.1	38.5	79.82
<b>5</b>	ItPrMe ( <b>A</b> )	2.124(6)	25.5	27.2	132.59
<b>6</b>	ItBu·AlMe <sub>3</sub> ( <b>B</b> )	2.162(2)	34.3	36.9	59.33
<b>7</b>	IMes·AlMe <sub>3</sub> ( <b>C</b> )	2.097(2)	31.8	33.6	114.47
<b>8</b>	IMes·Al(C <sub>6</sub> F <sub>5</sub> ) <sub>3</sub>	2.061(3)	31.2	32.7	157.79
<b>9</b>	IME·Al(C≡CtBu) <sub>3</sub>	2.051(2)	25.3	25.9	161.73
<b>10</b>	IPr·Al-((CH <sub>2</sub> ) <sub>3</sub> CH <sub>3</sub> ) <sub>3</sub>	2.118(2)	32.6	34.9	85.85
<b>11<sup>a</sup></b>	SitBu·AlMe <sub>3</sub>	2.229	33.3	37.6	38.59

<sup>a</sup> Value obtained using DFT calculations with the PBE0/6-311G(d,p) basis set.

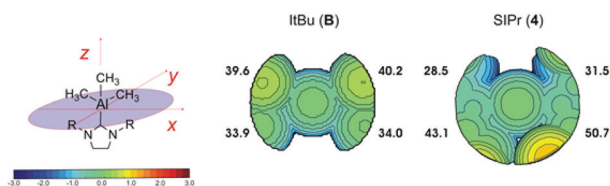
**B** was attributed to steric factors, and a standard parameter for quantifying the steric properties of NHCs is the percent buried volume, %V<sub>Bur</sub>, this parameter was used to compare complexes **1–4** with other NHC·AlR<sub>3</sub> species previously reported in the literature (Table 4).<sup>4b,c</sup> The %V<sub>Bur</sub> for each complex was calculated with the Al–NHC bond distance fixed at the experimental value obtained by X-ray diffraction studies and also at 2.0 Å, in order to provide a point of comparison independent of the Al–NHC distances.

Calculations revealed that the buried volume of the new NHC complexes was **4** > **3** > **2** > **1**. In order to provide a meaningful assessment of the steric influence of the NHC moiety on the overall stability of the NHC–AlMe<sub>3</sub> complexes, the %V<sub>Bur</sub> values of previously characterised counterparts were included. With this inclusion, the overall order is **4** > **B** > **3** > **2** > **C** ≈ **1** > **A**. It can be noted that complex **B** occupies a larger volume than that calculated for **1–2**, and is comparable to that of **3** but is surprisingly lower than that of **4** (*cf.* 36.9% in **B**). Since the %V<sub>Bur</sub> of compound **3** is larger than that of **1** and **2** and no decomposition was observed for either of the latter, the onset of decomposition may be attributed to the larger volume occupied by the isopropylphenyl groups as compared to the mesityl groups. The lower stability exhibited by the sterically encumbered complex **B** was previously rationalised by Dagorne *et al.* using the congested nature of the NHC present (36.9%V<sub>Bur</sub>). Consequently, the %V<sub>Bur</sub> calculated for **3** (36.2%, comparable to **B**) and for **4** (38.5%, greater than **B**) rationalises their lower stability (*cf.* **1** and **2**). To gain insight into the molecular level of the steric impact of the different NHCs, the topographic steric maps for compounds **1–4** and **A–C** were calculated (see ESI†). A comparative analysis of the topographic maps of complexes **2** and **4**, chosen as representatives of a stable and of an unstable system, is reported in Fig. 7. The steric contour maps reveal that the distribution of the steric bulk of the ligand in **2** is quite symmetrical around the metal, with large grooves between the two mesityl rings. As expected, the enhanced steric hindrance in **4** is mainly localised around the bulkier





**Fig. 7** Topographic steric maps of the SIMes and SIPr ligands in **2** and **4**. The iso-contour curves of the steric maps are in Å. The maps have been obtained starting from the crystallographic data of the Al–NHC complexes (CIF), with the Al–C<sub>carbene</sub> distance fixed at 2.0 Å. The xz plane is the mean plane of the NHC ring, whereas the yz plane is the plane orthogonal to the mean plane of the NHC ring, and passing through the C<sub>carbene</sub> atom of the NHC ring.



**Fig. 8** Topographic steric maps of the ItBu and SIPr ligands in **B** and **4**. The iso-contour curves of the steric maps are in Å. The maps have been obtained starting from the crystallographic data of the Al–NHC complexes (CIF), with the Al–C<sub>carbene</sub> distance fixed at 2.0 Å. The xz plane is the mean plane of the NHC ring, whereas the yz plane is the plane orthogonal to the mean plane of the NHC ring, and passing through the C<sub>carbene</sub> atom of the NHC ring.

*ortho* isopropyl groups, blocking the grooves between the two N-substituents. The difference in the nature of the distribution of the NHC ligands around the metal centre (similar maps are found for **1** and **3**, see ESI†) can be related to the lower stability of **3** and **4** as compared to **1** and **2**.

At this stage, it is also worth doing a comparative analysis of the topographic steric map of **B**, as the only reported unstable NHC–AlMe<sub>3</sub> complex, with that of **4** (Fig. 8). The topographic steric map of complex **B** shows the two top quadrants being slightly more sterically hindered. However, this topographical asymmetry is lower compared to **4**, where the distribution of the steric bulk is much more localised in the top left and top right quadrants. This difference is even more evident looking at the %V<sub>Bur</sub> representative of each single quadrant, *i.e.* 39.6–40.2% for **B** vs. 43.1–50.7% for **4**. Once again, the greater localization of the ligand steric hindrance in one or two quadrants around the metal centre may be the reason for the lower stability of the complexes, in the case of **4** as compared to **B**.

In addition to the %V<sub>Bur</sub> and topographic steric maps, bond dissociation energies were also evaluated to further rationalise the stability differences observed.<sup>4f</sup> DFT calculations show that the bond dissociation energy of complexes **1–4** decreases with increasing steric volume of the corresponding NHC: **1** > **2** > **3** > **4**, which further corroborated the observation that complexes **1** and **2** were less susceptible to dissociation as compared to **3** and **4** (114.47 (**1**), 104.76 (**2**), 97.14 (**3**), and 79.82 (**4**) kJ mol<sup>-1</sup>

**Table 5** %V<sub>Bur</sub> and dissociation energies for selected NHC·AlMe<sub>3</sub> complexes in increasing order of stability

Complex	%V <sub>Bur</sub> R = X-ray	%V <sub>Bur</sub> R = 2.0 Å	E <sub>diss</sub> (kJ mol <sup>-1</sup> )	Overall stability
SItBu·AlMe <sub>3</sub> <sup>a</sup>	33.3	37.6	38.59	Unstable
ItBu·AlMe <sub>3</sub> ( <b>B</b> )	34.3	36.9	59.33	
SIPr·AlMe <sub>3</sub> ( <b>4</b> )	36.1	38.5	79.82	
IPr·AlMe <sub>3</sub> ( <b>3</b> )	34.2	36.2	97.14	
SIMes·AlMe <sub>3</sub> ( <b>2</b> )	32.0	34.1	104.76	Stable
IMes·AlMe <sub>3</sub> ( <b>1</b> )	31.7	33.7	114.47	
IMes·AlMe <sub>3</sub> ( <b>C</b> )	31.8	33.6	114.47	
IiPrMe·AlMe <sub>3</sub> ( <b>A</b> )	25.5	27.2	132.59	

<sup>a</sup> Structure was optimised using PBE0/6-311G(d,p) model chemistry.

for **1–4** respectively). With the inclusion of the dissociation energy calculated for all NHC trimethylaluminium complexes, the order is as follows: **B** > **4** > **3** > **2** > **1** ≈ **C** > **A** (Table 5). It is worth noting that the %V<sub>Bur</sub> calculated for complex **4** is higher than that calculated for **B**; however its E<sub>diss</sub> is lower. This discrepancy may be explained by the differing electronic properties of the SIPr and ItBu NHCs moieties. On the one hand, going from the unsaturated (uNHC) to saturated (sNHC) NHCs contributes to an increased donor ability of the latter (sNHC > uNHC) (*vide supra*). On the other hand, the presence of withdrawing aryl substituents in the NHC leads to a decreased donor ability (alkyl-NHC > aryl-NHC). The opposite electronic effects present in both SIPr and ItBu (*i.e.*, the donating effect of the sp<sup>3</sup> backbone and withdrawing effects of the aryl groups in SIPr vs. the less donating sp<sup>2</sup> backbone combined with more donating alkyl groups in ItBu) make the relative NHC→metal donation properties difficult to predict.<sup>10</sup> However experimental evidence suggests that the SIPr N-heterocyclic carbene moiety present in **4** is a better donor ligand than ItBu since the <sup>1</sup>H NMR chemical shift of the methyl group on **4** (δ<sub>H</sub> –0.91) is more upfield than that found for **B** (δ<sub>H</sub> –0.73). This is also supported by <sup>11</sup>B NMR studies on NHC–BX<sub>3</sub> species, where the chemical shift for the ItBu–BCl<sub>3</sub> complex is more downfield than its IPr analogue.<sup>19</sup> However, the overall stability of these complexes is a concomitant balance between the electronic and steric properties of the NHC moieties present.<sup>4f</sup>

A plot of the calculated %V<sub>Bur</sub> (R = 2.0 Å) versus the calculated E<sub>diss</sub> for all the crystallographically characterised structures is shown in Fig. 9. The linear correlation between the steric bulk of the NHC ligand and the dissociation energy of these complexes (R<sup>2</sup> = 0.7057) shows that as the steric bulk increases, the dissociation energy decreases (see ESI†).

On inspection of the calculated %V<sub>Bur</sub> for all NHC·AlMe<sub>3</sub> complexes, it is observed that all stable complexes fall within or below a calculated %V<sub>Bur</sub> of 34%, whereas **B**, **3** and **4** have %V<sub>Bur</sub> values exceeding 36%. Therefore, the difference in the %V<sub>Bur</sub> observed between the stable and the unstable complexes is only 2–4% (Table 5). Despite the observed differences in %V<sub>Bur</sub> between **1** and **4** being minor and concentrated in small areas (as indicated by the topographic maps) they exhibit profound effects on the stability and dissociation energies of



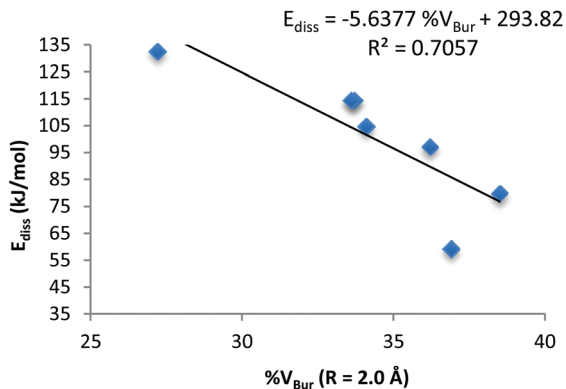


Fig. 9 Plot of calculated %V<sub>Bur</sub> vs. calculated E<sub>diss</sub> for NHC trimethylaluminium complexes.

these complexes (the asymmetry underlined by the maps adds value to this 2–4%).

To further test the proposed stability threshold of %V<sub>Bur</sub> of 36% and in order to complete the series of trimethylaluminium complexes, we attempted to synthesise Si*t*Bu·AlMe<sub>3</sub> (the saturated counterpart of **B**). Unfortunately, in all our synthetic attempts, only complex mixtures of products were obtained. The slurry formed in the reaction mixture was insoluble in most aprotic solvents (pentane, hexane, ether, THF, benzene, and toluene) which made the isolation of any viable product unsuccessful. To allow for comparison, the optimised geometry for Si*t*Bu·AlMe<sub>3</sub> was calculated using DFT methods (see ESI†). The corresponding %V<sub>Bur</sub> and the dissociation energy calculated are shown in Tables 4 and 5. From the theoretical values obtained and in comparison with the rest of the isolated NHC trimethylaluminium complexes, the %V<sub>Bur</sub> for Si*t*Bu·AlMe<sub>3</sub> falls within the range observed for the unstable complexes (37.6%), which may help explain our lack of success in its synthesis.

#### By-product obtained from SIPr·AlMe<sub>3</sub> (**4**)

As discussed previously, compounds **3** and **4** were shown to be susceptible towards the formation of the imidazolylidenes and other unidentified decomposition products. Efforts were made to isolate and identify some of these side-products. Since the observed rate of decomposition was temperature dependent – and in order to accelerate this process – the reaction mixture, initially used to produce complex **4** (at RT), was refluxed overnight instead. Crystalline solids from this reaction proved to be remarkably air and moisture sensitive, and difficult to separate from the complex mixture of products obtained from the reaction. However, solid **5** was obtained when the reaction mixture was extracted in THF. Suitable single crystals for X-ray diffraction studies were grown in a THF–hexane mixture (Fig. 10).

Complex **5** crystallised out as a methylated imidazolium salt containing a formate counter ion and an acetic acid lattice molecule (1:1:1 ratio). Despite the extreme care taken to ensure inert atmosphere conditions, presumably trace impuri-

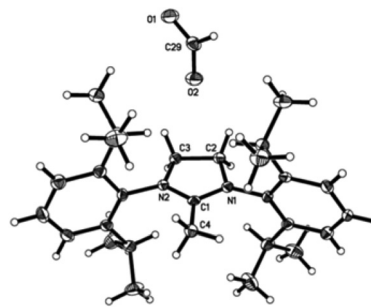


Fig. 10 Molecular structure of complex **5** (1,3-bis(2,6-diisopropylphenyl)-2-methylimidazolium formate). Thermal ellipsoids are drawn at the 50% probability level. Hydrogen atoms, except for H(4) and H(29), are omitted for clarity. C(1)–N(1) 1.319(4), C(1)–N(2) 1.320(4), C(1)–C(4) 1.483(4), C(2)–N(1) 1.488(2), C(3)–N(2) 1.471(4), C(2)–C(3) 1.539(4), C(2)–H(2) 0.991, C(3)–H(3) 0.990, C(4)–H(4) 0.980, C(29)–O(1) 1.266(4), C(29)–O(2) 1.219(4), C(29)–H(29) 0.950, N(1)–C(1)–N(2) 111.9(3), N(1)–C(1)–C(4) 124.3(3), N(2)–C(1)–C(4) 123.7(3), N(1)–C(2)–C(3) 102.4(2), N(2)–C(3)–C(2) 102.8(2), C(1)–C(4)–H(4) 109.4, O(1)–C(29)–O(2) 127.1(3), O(1)–C(29)–H(29) 116.5, O(2)–C(29)–H(29) 116.4.

ties of water, oxygen or carbon dioxide were present in the reaction mixture. Therefore, in the presence of these impurities, the formation of compound **5** could be considered closely related to the reaction proposed by Rogers *et al.* that describes the generation of carboxylate zwitterion species with acetate ionic liquids due to their relative structural similarity.<sup>20</sup> Further mechanistic studies are being conducted in order to rationalise the formation of **5**.

## Conclusions

In conclusion, the work presented here describes the synthesis and characterization of a series of new aromatic N-substituted NHC trimethylaluminium species. These complexes exhibit differing stabilities, which is attributed to differences in steric bulk of the NHCs used during their synthesis. Our studies demonstrate that the mesityl substituted NHC complexes (**1** and **2**) are more robust than their isopropylphenyl counterparts (**3** and **4**). In addition, comparison with previously characterised trimethylaluminium complexes showed that small variations (2–4%) in the steric bulk of the NHC substituent (%V<sub>Bur</sub>) exert a profound effect on the overall stability of the complex formed. The results obtained indicate that all the reported stable NHC·AlMe<sub>3</sub> complexes fall within or below a %V<sub>Bur</sub> of 34%. The unstable nature of complexes with %V<sub>Bur</sub> higher than 36% is illustrated by the new complexes **3** and **4** and the previously reported complex **B**. Mechanistic studies are currently underway to gain a better understanding of the reactivity of these trimethylaluminium complexes and to rationalise their decomposition pathways.

## Experimental section

### General method

All manipulations were carried out using standard Schlenk and glove-box techniques under a dried argon atmosphere and



with oven dried glassware. Toluene and ether were distilled over Na/benzophenone, degassed and purged with dry argon prior to use. Acetonitrile for high-resolution mass spectra (HRMS) was stirred over 4A molecular sieves and subsequently distilled under CaH<sub>2</sub> prior to use. All solvents used after purification were stored under 4A molecular sieves. Deuterated C<sub>6</sub>D<sub>6</sub> and THF-d<sub>8</sub> were distilled over Na and stored under potassium mirror. Starting materials IMes, IPr, SIMes, and SIPr were obtained commercially from Strem and used as received. Solution of trimethylaluminum (1 M) in toluene was prepared from the neat compound purchased from Sigma-Aldrich.

### Instrumentation

<sup>1</sup>H, <sup>13</sup>C NMR (400/100 MHz) spectra were recorded using a Bruker Avance DPX400 spectrometer with the <sup>1</sup>H, <sup>13</sup>C NMR chemical shifts internally referenced to the residual solvent peaks used. All NMR spectroscopic analyses were performed at room temperature (300 K). High-resolution mass spectra were obtained using a Water Q-ToF Premier, with ESI mode. Melting points were determined on an SRS-Optimelt MPA-100 apparatus using sealed glass capillaries under argon and were uncorrected. Infrared spectra were recorded as Nujol mulls using NaCl plates on a Shimadzu IR Prestige-21 FTIR spectrometer.

### Procedure for the synthesis of complexes 1–4

**IMes-AlMe<sub>3</sub> (1).** The compound IMes (0.304 g, 1 mmol) was dissolved in toluene followed by the addition of trimethylaluminum (AlMe<sub>3</sub>) (1 mmol, 1 M in toluene) to yield a clear solution. The resulting solution was stirred overnight and volatiles were evaporated to dryness followed by the addition of ether to yield a saturated solution. Colourless crystals were grown at room temperature. Yield: 64%. M.p.: 227–231 °C. <sup>1</sup>H NMR (C<sub>6</sub>D<sub>6</sub>): δ = −0.78 (s, 9H, AlCH<sub>3</sub>), 2.03 (s, 12H, *o*-Ph(CH<sub>3</sub>)), 2.08 (s, 6H, *p*-Ph(CH<sub>3</sub>)), 5.96 (s, 2H, NCH), 6.75 (s, 4H, C<sub>6</sub>H<sub>2</sub>). <sup>13</sup>C{<sup>1</sup>H} NMR (C<sub>6</sub>D<sub>6</sub>): δ = −7.6 (AlMe<sub>3</sub>, broad), 17.6 (ArMe), 21.0 (ArMe), 122.5 (NCH), 129.3 (Ar), 135.3 (Ar), 135.5 (Ar), 139.4 (Ar), 178.5 (C<sub>carbene</sub>, weak). IR (Nujol, cm<sup>−1</sup>):  $\tilde{\nu}$  = 615 (ν Al–C stretch; m). HRMS: calcd for C<sub>24</sub>H<sub>33</sub>AlN<sub>2</sub> [M + H]<sup>+</sup>: 377.25; found 377.25.

**SIMes-AlMe<sub>3</sub> (2).** The same procedure was adopted as that for **1**, which yielded colourless crystals. Yield: 67%. M.p.: 234–238 °C. <sup>1</sup>H NMR (C<sub>6</sub>D<sub>6</sub>): δ = −0.86 (s, 9H, AlCH<sub>3</sub>), 2.08 (s, 6H, *p*-Ph(CH<sub>3</sub>)), 2.21 (s, 12H, *o*-Ph(CH<sub>3</sub>)), 3.00 (s, 4H, NCH<sub>2</sub>), 6.76 (s, 4H, C<sub>6</sub>H<sub>2</sub>). <sup>13</sup>C{<sup>1</sup>H} NMR (C<sub>6</sub>D<sub>6</sub>): δ = −7.6 (AlMe<sub>3</sub>, broad), 18.0 (ArMe), 21.0 (ArMe), 51.0 (NCH), 129.7 (Ar), 135.4 (Ar), 136.1 (Ar), 138.6 (Ar), 202.3 (C<sub>carbene</sub>, weak). IR (Nujol, cm<sup>−1</sup>):  $\tilde{\nu}$  = 627 (ν Al–C stretch; m). HRMS: calcd for C<sub>24</sub>H<sub>35</sub>AlN<sub>2</sub> [M + H]<sup>+</sup>: 379.27; found 379.27.

**IPr-AlMe<sub>3</sub> (3).** The same procedure was adopted as that for **1** except that colourless crystals were obtained in saturated toluene solution. Yield: 62%. M.p.: 211–213 °C. <sup>1</sup>H NMR (C<sub>6</sub>D<sub>6</sub>): δ = −0.86 (s, 9H, AlCH<sub>3</sub>), 0.98–1.00 (d, 12H, J<sub>H–H</sub> = 6.8 Hz, CH(CH<sub>3</sub>)<sub>2</sub>), 1.39–1.40 (d, 12H, J<sub>H–H</sub> = 6.8 Hz, CH(CH<sub>3</sub>)<sub>2</sub>), 2.74–2.81 (p, 4H, J<sub>H–H</sub> = 6.8 Hz, CH(CH<sub>3</sub>)<sub>2</sub>), 6.45 (s, 4H, NCH<sub>2</sub>), 7.10–7.12 (m, 4H, *m*-C<sub>6</sub>H<sub>3</sub>), 7.21–7.25 (m, 2H, *p*-C<sub>6</sub>H<sub>3</sub>). <sup>13</sup>C{<sup>1</sup>H} NMR (C<sub>6</sub>D<sub>6</sub>): δ = −7.5 (AlMe<sub>3</sub>, broad), 22.6 (CH(CH<sub>3</sub>)<sub>2</sub>), 25.7 (CH(CH<sub>3</sub>)<sub>2</sub>), 28.7 (CH(CH<sub>3</sub>)<sub>2</sub>), 123.9 (Ar), 124.0 (NCH), 130.5 (Ar), 135.3 (Ar), 145.8 (Ar), 181.1 (C<sub>carbene</sub>, weak). IR (Nujol, cm<sup>−1</sup>):  $\tilde{\nu}$  = 615 (ν Al–C stretch; m). HRMS: calcd for C<sub>30</sub>H<sub>45</sub>AlN<sub>2</sub> [M + H]<sup>+</sup>: 461.35; found 461.35.

**SIPr-AlMe<sub>3</sub> (4).** The same procedure was adopted as that for **1**. Colourless crystals were obtained in saturated toluene solution. Yield: 51%. M.p.: 194–204 °C. <sup>1</sup>H NMR (C<sub>6</sub>D<sub>6</sub>): δ = −0.91 (s, 9H, AlCH<sub>3</sub>), 1.09–1.11 (d, 12H, J<sub>H–H</sub> = 6.8 Hz, CH(CH<sub>3</sub>)<sub>2</sub>), 1.45–1.46 (d, 12H, J<sub>H–H</sub> = 6.8 Hz, CH(CH<sub>3</sub>)<sub>2</sub>), 3.23–3.30 (m, 4H, CH(CH<sub>3</sub>)<sub>2</sub>), 3.45 (s, 4H, NCH<sub>2</sub>), 7.08–7.10 (m, 2H, *p*-C<sub>6</sub>H<sub>3</sub>), 7.16–7.17 (m, 2H, *m*-C<sub>6</sub>H<sub>3</sub>), 7.19–7.21 (m, 2H, *m*-C<sub>6</sub>H<sub>3</sub>). <sup>13</sup>C{<sup>1</sup>H} NMR (C<sub>6</sub>D<sub>6</sub>): δ = −7.1 (AlMe<sub>3</sub>, broad), 23.6 (CH(CH<sub>3</sub>)<sub>2</sub>), 26.2 (CH(CH<sub>3</sub>)<sub>2</sub>), 28.8 (CH(CH<sub>3</sub>)<sub>2</sub>), 54.1 (NCH), 124.7 (Ar), 129.9 (Ar), 135.7 (Ar), 146.8 (Ar), 205.2 (C<sub>carbene</sub>, weak). IR (Nujol, cm<sup>−1</sup>):  $\tilde{\nu}$  = 617 (ν Al–C stretch; m). HRMS: calcd for C<sub>30</sub>H<sub>47</sub>AlN<sub>2</sub> [M + H]<sup>+</sup>: 463.36; found 463.36.

### X-Ray crystallographic studies

Diffraction-quality crystals **1–4** were obtained in ether or toluene at room temperature or −25 °C, and **5** in a THF–hexane mixture at room temperature. The crystals were mounted onto quartz fibers, and the X-ray diffraction intensity data were collected at 103 K with a Bruker Kappa diffractometer equipped with a CCD detector, employing Mo Kα radiation (λ = 0.71073 Å), with the SMART suite of programs.<sup>21</sup> All data were processed and corrected for Lorentz and polarization effects with SAINT and for absorption effects with SADABS.<sup>22</sup> Structural solution and refinement were carried out with the SHELXTL suite of programs.<sup>23</sup> The structures were solved by direct methods or Patterson maps to locate the heavy atoms, followed by difference maps for the light, non-hydrogen atoms. For **3** the isopropyl groups were disordered and these are modelled in two alternative sites and refined with appropriate restraints. All non-hydrogen atoms were refined with anisotropic thermal parameters.

### Computational details

**DFT calculations.** All calculations were done with Gaussian 09 B.01. The structures of the compounds were optimised with the PBE0/6-311G(d,p) model chemistry. The polarised continuum model (PCM) to mimic the solvent effects was also used. The solvent used in the experiments is *d*-benzene, but we did not make any further effort to determine its dielectric constant and used the value for benzene (ε = 2.2706) for the calculations. Vibrational frequencies were calculated to validate that these geometries are stable local minima. To calculate the NMR chemical shift for each compound B972/6-311+G (2d,p) was used on the optimised geometries with ultrafine grids in the calculations and the solvent effect was also considered with the PCM model. Dissociation energies were calculated from the gas phase internal energy values.

**%V<sub>Bur</sub> calculation parameters.** All calculations were performed using crystallographic data (CIF). The C<sub>carbene</sub> centre is coordinated at the origin of the sphere with a distance equal to the metal–ligand distance and to the fixed value of 2.0 Å.





3.50 Å was selected as the value for the sphere radius; mesh spacing for numerical integration was scaled to 0.05; hydrogen atoms were omitted for the calculations; and bond radii were scaled by 1.17.

## Notes and references

- 1 A. J. Arduengo, R. L. Harlow and M. Kline, *J. Am. Chem. Soc.*, 1991, **113**, 361.
- 2 L. Cavallo and C. S. J. Cazin, in *N-heterocyclic Carbenes in Transition Metal Catalysis and Organocatalysis*, ed. C. S. J. Cazin, Springer, Netherlands, 1996, vol. 32, p. 1.
- 3 (a) S. J. Hock, L. Schaper, W. A. Herrmann and F. E. Kühn, *Chem. Soc. Rev.*, 2013, **42**, 5073; (b) H. D. Velazquez and F. Verpoort, *Chem. Soc. Rev.*, 2012, **41**, 7032; (c) A. T. Normand and K. J. Cavell, *Eur. J. Inorg. Chem.*, 2008, **18**, 2781; (d) I. J. B. Lin and C. S. Vasam, *Coord. Chem. Rev.*, 2007, **251**, 642; (e) E. Peris and R. H. Crabtree, *Coord. Chem. Rev.*, 2004, **248**, 2239; (f) V. César, S. Bellemin-Lapponnaz and L. H. Gade, *Chem. Soc. Rev.*, 2004, **33**, 619; (g) M. C. Perry and K. Burgess, *Tetrahedron: Asymmetry*, 2003, **14**, 951; (h) W. G. Herrmann, *Angew. Chem., Int. Ed.*, 2002, **41**, 1290.
- 4 (a) L. Benhamou, E. Chardon, G. Lavigne, S. Bellemin-Lapponnaz and V. César, *Chem. Rev.*, 2011, **111**, 2705; (b) H. Clavier and S. P. Nolan, *Chem. Commun.*, 2010, **46**, 841; (c) A. Poater, B. Cosenza, A. Correa, S. Giudice, F. Ragone, V. Scarano and L. Cavallo, *Eur. J. Inorg. Chem.*, 2009, **13**, 1759; (d) S. Díez-González and S. P. Nolan, *Coord. Chem. Rev.*, 2007, **251**, 874; (e) H. Jacobsen, A. Correa, C. Costabile and L. Cavallo, *J. Organomet. Chem.*, 2006, **691**, 4350; (f) L. Cavallo, A. Correa, C. Costabile and H. Jacobsen, *J. Organomet. Chem.*, 2005, **690**, 5407; (g) A. M. Magill, K. J. Cavell and B. F. Yates, *J. Am. Chem. Soc.*, 2004, **126**, 8717.
- 5 (a) C. Fliedel, G. Schnee, T. Avilés and S. Dagorne, *Coord. Chem. Rev.*, 2014, **275**, 63; (b) P. Horeglad, G. Szczepaniak, M. Dranka and J. Zachara, *Chem. Commun.*, 2012, **48**, 1171; (c) S. Aldridge and A. J. Downs, in *The Group 13 Metals Aluminium, Gallium, Indium and Thallium: Chemical Patterns and Peculiarities*, ed. S. Aldridge and A. J. Downs, Wiley, UK, 2011, vol. 3; (d) S. G. Alexander, M. L. Cole and C. M. Forsyth, *Chem. – Eur. J.*, 2009, **15**, 9201; (e) S. G. Alexander, M. L. Cole, S. K. Furfari and M. Kloth, *Dalton Trans.*, 2009, 2909; (f) M. L. Cole, S. K. Furfari and M. Kloth, *J. Organomet. Chem.*, 2009, **694**, 2934; (g) R. S. Ghadwal, H. W. Roesky, R. Herbst-Irmer and P. G. Jones, *Z. Anorg. Allg. Chem.*, 2009, **635**, 431; (h) B. Bantu, G. M. Pawar, K. Wurst, U. Decker, A. M. Schmidt and M. R. Buchmeiser, *Eur. J. Inorg. Chem.*, 2009, **13**, 1970; (i) N. Marion, E. C. Escudero-Adán, J. Benet-Buchholz, E. D. Stevens, L. Fensterbank, M. Malacria and S. P. Nolan, *Organometallics*, 2007, **26**, 3256; (j) J. H. Cotgreave, D. Colclough, G. Kociok-Köhn, G. Ruggiero, C. G. Frost and A. S. Weller, *Dalton Trans.*, 2004, 1519; (k) A. Stasch, S. Singh, H. W. Roesky, M. Noltemeyer and H. G. Schmidt, *Eur. J. Inorg. Chem.*, 2004, **20**, 4052; (l) R. J. Baker and C. Jones, *Appl. Organomet. Chem.*, 2003, **17**, 807; (m) R. J. Baker, M. L. Cole, C. Jones and M. F. Mahon, *Dalton Trans.*, 2002, **9**, 1992; (n) R. J. Baker, A. J. Davies, C. Jones and M. Kloth, *J. Organomet. Chem.*, 2002, **656**, 203; (o) M. L. Cole, A. J. Davies and C. Jones, *Dalton Trans.*, 2001, **17**, 2451; (p) C. D. Abernethy, M. L. Cole and C. Jones, *Organometallics*, 2000, **19**, 4852; (q) M. D. Francis, D. E. Hibbs, M. B. Hursthouse, C. Jones and N. A. Smithies, *Dalton Trans.*, 1998, **19**, 3249; (r) D. E. Hibbs, M. B. Hursthouse, C. Jones and N. A. Smithies, *Chem. Commun.*, 1998, 869; (s) S. J. Black, D. E. Hibbs, M. B. Hursthouse, C. Jones, K. M. A. Malik and N. A. Smithies, *Dalton Trans.*, 1997, 4313; (t) A. J. Arduengo, H. V. R. Dias, J. C. Calabrese and F. Davidson, *J. Am. Chem. Soc.*, 1992, **114**, 9742.
- 6 (a) R. A. Musgrave, R. S. P. Turbervill, M. Irwin and J. M. Goicoechea, *Angew. Chem., Int. Ed.*, 2012, **51**, 10832; (b) Y. Zhang, G. M. Miyake and E. Y.-X. Chen, *Angew. Chem., Int. Ed.*, 2010, **49**, 10158; (c) A. R. Kennedy, R. E. Mulvey and S. D. Robertson, *Dalton Trans.*, 2010, **39**, 9091; (d) A. L. Schmitt, G. Schnee, R. Welter and S. Dagorne, *Chem. Commun.*, 2010, **46**, 2480; (e) W. C. Shih, C. H. Wang, Y. T. Chang, G. P. A. Yap and T. G. Ong, *Organometallics*, 2009, **28**, 1060; (f) Y. Lee, B. Li and A. H. Hoveyda, *J. Am. Chem. Soc.*, 2009, **131**, 11625; (g) M. Schiefer, N. D. Reddy, H.-J. Ahn, A. Stasch, H. W. Roesky, A. C. Schlicker, H.-G. Schmidt, M. Noltemeyer and D. Vidovic, *Inorg. Chem.*, 2003, **42**, 4970; (h) X. W. Li, J. Su and G. H. Robinson, *Chem. Commun.*, 1996, 2683.
- 7 (a) Y. Wang, B. Quillian, P. Wei, C. S. Wannere, Y. Xie, R. B. King, H. F. Schaefer, P. v. R. Schleyer and G. H. Robinson, *J. Am. Chem. Soc.*, 2007, **129**, 12412; (b) H. Braunschweig, R. D. Dewhurst, K. Hammond, J. Mies, K. Radacki and A. Vargas, *Science*, 2012, **336**, 1420.
- 8 B. Quillian, P. Wei, C. S. Wannere, P. v. R. Schleyer and G. H. Robinson, *J. Am. Chem. Soc.*, 2009, **131**, 3168.
- 9 (a) D. W. Stephan, *Dalton Trans.*, 2009, 3129; (b) P. A. Chase and D. W. Stephan, *Angew. Chem., Int. Ed.*, 2008, **47**, 7433; (c) D. Holschumacher, T. Bannenberg, C. G. Hrib, P. G. Jones and M. Tamm, *Angew. Chem., Int. Ed.*, 2008, **47**, 7428.
- 10 H. V. Huynh, Y. Han, R. Jothibas and J. A. Yang, *Organometallics*, 2009, **28**, 5395.
- 11 S. Leuthäuser, D. Schwarz and H. Plenio, *Chem. – Eur. J.*, 2007, **13**, 7195.
- 12 G. Davidson, in *Spectroscopic Properties of Inorganic and Organometallic Compounds*, ed. G. Davidson and E. A. V. Ebsworth, Royal Society of Chemistry, UK, 1990, vol. 23, p. 227.
- 13 (a) X. Bantreil and S. P. Nolan, *Nat. Protocols*, 2011, **6**, 69; (b) A. J. Arduengo, R. Krafczyk and R. Schmutzler, *Tetrahedron*, 1999, **55**, 14523.
- 14 D. A. Wierda and A. R. Barron, *Polyhedron*, 1989, **8**, 831.



- 15 A. R. Barron, *J. Chem. Soc., Dalton Trans.*, 1988, 3047.
- 16 J. C. Huffman and W. E. Streib, *J. Chem. Soc. D*, 1971, 911.
- 17 (a) M. Kessler, C. Knapp and A. Zogaj, *Organometallics*, 2011, **30**, 3786; (b) A. Kuczkowski, S. Schulz and M. Nieger, *Eur. J. Inorg. Chem.*, 2001, 2605; (c) D. C. Bradley, H. Chudzynska, M. M. Faktor, D. M. Frigo, M. B. Hursthouse, B. Hussain and L. M. Smith, *Polyhedron*, 1988, **14**, 1289.
- 18 V. V. Shatunov, A. A. Korlyukov, A. V. Lebedev, V. D. Sheludyakow, B. I. Kozyrkin and V. Y. Orlov, *J. Organomet. Chem.*, 2011, **696**, 2238.
- 19 S. Muthaiah, D. C. H. Do, R. Ganguly and D. Vidović, *Organometallics*, 2013, **32**, 6718.
- 20 (a) G. Gurau, H. Rodríguez, S. P. Kelly, P. Janiczek, R. S. Kalb and R. D. Rogers, *Chem. Commun.*, 2011, **50**, 12024; (b) H. Rodríguez, G. Gurau, J. D. Holbrey and R. D. Rogers, *Chem. Commun.*, 2011, **47**, 3222.
- 21 *SMART version 5.628*, Bruker AXS Inc., Madison, WI, USA, 2001.
- 22 G. M. Sheldrick, *SADABS*, University of Göttingen, Göttingen, Germany, 1996.
- 23 *SHELXTL version 5.1*, Bruker AXS Inc., Madison, WI, USA, 1997.

