

# Korean mistletoe lectin (KML-IIU) and its subchains induce nitric oxide (NO) production in murine macrophage cells

Kang, Tae Bong; Yoo, Yung Choon; Lee, Kwan Hee; Yoon, Ho Sup; Her, Erk; Kim, Jong Bae; Song, Seong Kyu

2008

Kang, T. B., Yoo, Y. C., Lee, K. H., Yoon, H. S., Her, E., Kim, J. B., et al. (2008). Korean mistletoe lectin (KML-IIU) and its subchains induce nitric oxide(NO) production in murine macrophage cells. *Journal of biomedical science*, 15(2).

<https://hdl.handle.net/10356/93832>

<https://doi.org/10.1007/s11373-007-9210-2>

---

© 2008 Springer Verlag This is the author created version of a work that has been peer reviewed and accepted for publication by *Journal of Biomedical Science*, Springer Verlag. It incorporates referee's comments but changes resulting from the publishing process, such as copyediting, structural formatting, may not be reflected in this document. The published version is available at: [DOI: <http://dx.doi.org/10.1007/s11373-007-9210-2>].

*Downloaded on 03 Jun 2023 07:03:07 SGT*

# **Korean mistletoe lectin (KML-IIU) and its subchains induce nitric oxide (NO) production in murine macrophage cells**

Tae Bong Kang<sup>1</sup>, Yung Choon Yoo<sup>2</sup>, Kwan Hee Lee<sup>1</sup>, Ho Sup Yoon<sup>3</sup>, Erk Her<sup>4</sup>, Jong Bae Kim<sup>1</sup> & Seong Kyu Song<sup>1,\*</sup>

<sup>1</sup>School of Food and Biosciences, Handong Global University, Pohang, 791-708, Korea;

<sup>2</sup>Department of Microbiology, College of Medicine, Konyang University, Nonsan City, Korea; <sup>3</sup>Division of Structural and Computational Biology, School of Biological Sciences, Nanyang Technological University, 60 Nanyang Drive, Singapore, 637511, Singapore;

<sup>4</sup>Department of Immunology, College of Medicine, Konkuk University, Chungju City, 380-701, Korea

\*To whom correspondence should be addressed. E-mail: sksong@handong.edu

*Key words:* mistletoe lectin, nitric oxide, nitric oxide synthase, iNOS, macrophage, RAW264.7

## **Abstract**

Synthesis of nitric oxide (NO) is one of the important effector functions of innate immune cells. Although several reports have indicated mistletoe lectins induce immune cells to produce cytokines, studies regarding the activities of the lectins in the production of NO have been very limited. Here, we report on the induction of NO synthesis in a murine macrophage cell line, RAW264.7, by Korean mistletoe lectin (KML-IIU). When the macrophage cells were treated with KML-IIU in the presence of a suboptimal concentration of IFN- $\gamma$ , NO production was induced in a concentration-dependent manner. Significantly higher levels of NO were induced by subchains of the KML-IIU (A and B), which have lower toxicities, as compared to the hololectin. Furthermore, expression of the inducible nitric oxide synthase (iNOS) gene was elevated in accordance with the level of NO production. When the synthase was inhibited by iNOS inhibitors (L-NIL and L-NAME), NO production was specifically reduced in a concentration-dependent manner. Our studies demonstrate that the KML-IIU and its subchains induce NO production in murine macrophage cells via activation of the iNOS gene expression, suggesting that the KML-IIU subchains may be used as an immunomodulator to enhance the effector functions of innate immune cells.

## Introduction

Mistletoe lectin has become a subject of interest due to its marked biological activities including its cytotoxicity and immunomodulatory effects [1–9]. Mistletoe lectin consists of two subunits, an A chain and a B chain, linked by a disulfide bond. The A chain is cytotoxic to various cancer cells while the B chain helps the A chain bind and enter into the target cells [4, 10]. The disulfide bridge between the A chain and the B chain is necessary for maintaining the cytotoxicity of the lectin [11].

Numerous studies, both *in vitro* and *in vivo*, have shown that mistletoe lectin induces immune cells to produce inflammatory cytokines, such as TNF- $\alpha$ , IFN- $\gamma$ , IL-1, IL-12 and IL-6 [7, 12, 13]. Not only does the mistletoe hololectin (a complex of A and B subchains linked by a disulfide bond) induce cytokine release, individual subchains of the mistletoe lectin also do the same [7]. As for murine macrophages, the A chain is better at inducing expression of TNF- $\alpha$  mRNA than the B chain [14]. These findings indicate that the mistletoe lectin can be a potent activator of immune cells. Nitric oxide (NO), a gaseous free radical, is known to be one of the most important effector molecules of innate immune cells. Its production is stimulated in macrophages when the cells are exposed to LPS, TNF- $\alpha$ , or IFN- $\gamma$  [15, 16]. Nitric oxide is synthesized by three different kinds of NO synthases: iNOS, eNOS, and nNOS [17–19]. It mediates vasodilatation, inflammation, immune responses, and even platelet aggregation. These biological activities actually play significant roles in antibacterial, antiparasital, and tumoricidal activities in mice [20–22]. In addition, the NO in innate immune cells is essential to the improvement of tuberculosis in mice [23, 24] and in human [23, 25].

Although Korean mistletoe lectin has demonstrated its immunomodulatory effects via *in vitro* as well as *in vivo* studies as explained earlier, the possibility of NO induction by the lectin has not yet been explored. Therefore, we investigated activities of the Korean mistletoe lectin (KML-IIU) and its subchains in NO production using a murine macrophage cell line, RAW264.7. The results indicate that mistletoe lectin and both of its A and B subchains increase NO synthesis from macrophage cells by activating an expression of the iNOS gene.

## Materials and methods

### *Separation and isolation of subchains from KML-IIU*

Korean mistletoe lectin (KML-IIU) was purified as previously described elsewhere [26, 27]. The purification process was performed under acidic conditions (3% acetic acid) in order to eliminate or significantly reduce any possible endotoxin effect. To separate subchains A and B, 5 mg of KML-IIU hololectin was dissolved in 15 ml of reducing buffer [10 mM phosphate buffered saline (PBS; pH 7.4) containing 5% of 2-mercaptoethanol] and was incubated at 4°C for 12 h. The sample was then applied to a HCl-hydrolyzed Sepharose 4B column (3 x 9 cm, 50 ml), and the column was then washed with a 5-fold column volume of the reducing buffer. Subchain A was eluted while subchain B was attached to the column resin. The B chain was later eluted with 0.1 M lactose solution. The

protein fractions were pooled and were dialyzed extensively against PBS, and their concentrations were determined by BCA assay [28].

#### *SDS-polyacrylamid gel electrophoresis (PAGE)*

SDS-PAGE was carried out in a 12.5% separation gel under a reducing condition (2.5% mercaptoethanol, 2-ME) as described elsewhere [29].

#### *Hemagglutination assay*

Serially diluted lectin samples (two-fold dilution) were applied into a U-type microtiter plate containing 2% human erythrocytes (blood group B) in a 10 mM sodium-phosphate buffer (pH 7.4). Following a brief mixing, the erythrocytes were allowed to settle for 1 h at room temperature in order to determine their agglutination. Agglutinating red blood cells settled as a film at the bottom of the well whereas unagglutinating cells formed a button shape at the bottom.

#### *Cell line and reagent*

RAW264.7 cells, a murine macrophage cell line, were cultured in Dulbecco's modified Eagle's medium (DMEM) supplemented with 10% fetal bovine serum (FBS, Gibco BRL) and 100 U/ml of penicillin-streptomycin (Gibco BRL) in a humidified atmosphere with 5% CO<sub>2</sub> at 37°C.

Murine recombinant interferon- $\gamma$  (IFN- $\gamma$ ) and LPS were purchased from Roche Diagnostics (Mannheim, Germany) and Sigma (Missouri, USA), respectively. Inhibitors of NO synthase, L-N6-(1-Iminoethyl) Lysine (L-NIL) and NGNitro-L-Arginine-Methyl Ester Hydrochloride (L-NAME) were purchased from Sigma.

#### *Cytotoxicity test*

RAW264.7 cells ( $1 \times 10^5$  cells/well) in 96-well plates were incubated with the indicated concentrations of the lectin samples for 24 h. The cell viability was measured by XTT method as described elsewhere [30].

#### *Cell stimulation*

Cells were seeded in 24-well plates (Nunc) at a density of  $5 \times 10^5$  cells/well in DMEM supplemented with 10% FBS. Following incubation for 3 h at 37°C under 5% CO<sub>2</sub>, the cells were added with various concentrations of the lectins plus 50 U/ml of IFN- $\gamma$  and further cultivated. After 24 h incubation, the supernatants were collected and stored at -20°C until assayed for NO production.

#### *Measurement of NO concentration*

Nitric oxide production in cell cultures was measured as previously described [31]. In short, a small portion (100  $\mu$ l) of the cell culture supernatant was incubated at room temperature

for 10 min with an equal volume of the Griess reagent (1% sulfanilamide, 0.1% N-(1-naphthyl)-ethylenediamine dihydrochloride, and 2.5% H<sub>3</sub>PO<sub>4</sub>). Nitric oxide concentration was determined by measuring nitrites in the mixture through an ELISA reader (Bio-Tek, Sweden) at 540 nm wave length.

#### *RNA extraction and Northern blot analysis*

After the RAW264.7 cells stimulated by the mistletoe lectin for 12 h, the total cellular RNA was extracted using Trizol (Gibco BRL) according to the provider's instructions. The RNA samples, transferred to a nylon membrane (Roche, Mannheim, Germany), were analyzed by hybridization with the mouse iNOS-specific oligoprobe labeled with digoxigenin (Sigma-Genosys Ltd., Cambridge, UK). The hybridized oligoprobe was then detected by the anti-digoxigenin antibodies conjugated with alkaline phosphatase (Roche, Mannheim, Germany). The amount of RNA loaded on the gel for the Northern blot analysis was assessed by hybridization with a 18S ribosomal RNA-specific probe [32].

## **Results**

#### *Isolation of a lectin (KML-IIU) from the Korean mistletoe and obtaining its subchains*

The lectin KML-IIU was purified from the Korean mistletoe and the hololectin was processed to obtain its A and B subchains as described above [26, 27]. Following treatment with 2%  $\beta$ -mercaptoethanol overnight at room temperature, the KML-IIU mixture was applied to a hydrolyzed Sepharose 4B column. While the A chain passed through the column, the B chain was bound to the column. The B chain was then eluted with 0.1 M lactose. Figure 1 shows the KML-IIU hololectin isolated along with its subchains as assessed by 12.5% SDS-PAGE. Molecular weights of the A and the B subchains were estimated to be 30 Kd and 34 Kd, respectively. Only the B chain, but not the A chain, agglutinated erythrocytes as expected (Figure 2). These results suggest that both the A and the B subchains were obtained in an active form.

#### *Cytotoxicity of KML-IIU and its subchains*

In order to investigate the cytotoxicity of KML-IIU and its subchains, RAW264.7 murine macrophage cells were incubated for 24 h in the presence of different concentrations of the lectins. As indicated in Figure 3, the hololectin showed much stronger cytotoxic activity than the subchains even at a 40 ng/ml level, which is consistent with the previous studies [26]. However, subchain B showed a moderate cytotoxicity at 1000 ng/ml while sub-chain A was nontoxic to the cells at the same concentration.

### *Induction of NO production by KML-IIU and its subchains*

As shown in Figure 4, NO production was markedly increased in a concentration-dependent manner when macrophage cells, RAW264.7, were treated either with KML-IIU, with subchain A, or with subchain B in combination with IFN- $\gamma$  (50 U/ml). The KML-IIU holoenzyme showed a decreased NO production at concentrations higher than 40 U/ml. When the cells were treated with less than 40 ng/ml of the lectin, the level of NO induced was inconsistent (data not shown).

### *Inhibition of lectin-induced NO production by iNOS-specific inhibitors*

To investigate whether the NO production induced by the KML-IIU or its subchains is involved in the L-Arginine-dependent pathway, the RAW264.7 macrophage cells were incubated for 1 h in the presence of NO synthase inhibitors: L-N<sup>6</sup>-(1-Iminoethyl)Lysine (L-NIL), or NGNitro-L-Arginine-Methyl Ester Hydrochloride (L-NAME) [33–35]. The NO production was progressively inhibited by L-NIL and L-NAME in a concentration-dependent manner (Table 1). However, inhibition of NO production by L-NIL was more efficient compared to L-NAME.

### *Activation of the iNOS gene expression by the mistletoe lectin, KML-IIU*

To further confirm if the increased NO production is correlated with the level of iNOS gene expression, the level of iNOS mRNA in the lectin-treated macrophage cells was determined by Northern blot analysis. As shown in Figure 5, iNOS mRNA was not expressed when the RAW264.7 cells were treated with IFN- $\gamma$  alone. Even when the cells were treated with the KML-IIU hololectin in combination with IFN- $\gamma$ , the iNOS gene was induced slightly. However, expression of iNOS mRNA was apparently induced, in a concentration-dependent manner, in the cells treated with either the subchain A or the subchain B plus IFN- $\gamma$ . The B chain induced better expression of the iNOS mRNA as compared to the A chain.

## **Discussion**

Many studies have suggested that mistletoe lectin activates monocytes and macrophages for secretion of cytokines, such as TNF- $\alpha$ , IL-1, and IL-6 [36, 37]. The two subchains of the lectin were shown to have similar functions as well [7, 14, 38]. However, studies concerning activities of the mistletoe lectin on production of NO, a major effector molecule of activated innate immune cells, are very limited. In particular, an effect of the subchains of mistletoe lectin on NO production has not yet been reported.

In this paper, we report that Korean mistletoe lectin, KML-IIU, as well as its subchains A and B, induced NO production from RAW264.7 macrophage cells via activation of iNOS gene expression. When the RAW264.7 macrophage cells were treated with the hololectin

KML-IIU, NO production was slightly induced at 40 ng/ml. Both A and B subchains of the lectin, however, significantly induced NO production in a concentration-dependence manner. It has been well documented that NO produced from macrophages contributes to the control of tuberculosis or to its associated pathology in humans [39]. The macrophage NO is also required to control the same disease [40] as well as malaria [41] in mice. S-nitrothiols are the most important active forms of NO as an antimicrobial agent [42]. NO could act in synergy by reacting with  $O_2$ ,  $H_2O_2$ ,  $\cdot OH$ , and sometimes HOCl produced by monocytes and activated macrophages [43]. In addition, macrophage NO is important for antitumor activities. Inhibition of NO production by administration of NOS inhibitors to mice has promoted growth of UV light-induced skin cancers [44] and increased NO production by transfecting NOS cDNA significantly reduced melanoma cell proliferation and metastasis [45].

Among three genes encoding NO synthases (nNOS, eNOS, and iNOS), iNOS only appears to express in primary macrophages [46]. The iNOS is, therefore, a major resource for production of macrophage NO, which is responsible for antitumor and antibacterial functions. The level of iNOS gene expression was directly correlated with the concentration of NO released in the media from the cells treated with the lectin. When competitive inhibitors of iNOS (L-NIL and L-NAME) were added to the lectin-induced cells, the NO production was specifically inhibited in a concentration-dependent manner. These results clearly indicate KML-IIU and its subchains induce NO production from the macrophages through augmented expression of iNOS gene. Our finding supports a previous report that mice with mammary adenocarcinoma were shown an increased NO production in the blood when treated with IL-2 and the European mistletoe lectin, i.p., for immunotherapy [47].

The subchains of KML-IIU were less or nontoxic to the cells as compared to the hololectin. It has been known that the A chain of mistletoe lectin enters into the target cell with the help of the B chain and inhibits protein synthesis of the cell by directly binding to a translation factor [48, 49]. The A chain alone cannot enter into the target cells without the B chain's help [11]. The lower toxicity of the subchains may be due to the inability of those subchains to enter target cells alone. Both the A and the B subchains induced NO production much better than the hololectin. This result may be due to the higher toxicity of the hololectin, which results in a reduction in cell numbers and a consequent lowering of NO production. However, this explanation may not apply to cases where the lectin concentration is 40 ng/ml or less, which showed only minor cytotoxicity. Although the KML-IIU hololectin and subchain A were comparable in NO production, subchain B showed higher NO inducibility (approximately 40% higher) than the others at the same concentration. If the lectin concentration was reduced less than 40 ng/ml, induced NO production was inconsistent. The underlying mechanism whereby the subchains induce NO production better than the hololectin is not clear at present. It is hypothesized that the subchains in a free form may have easier access to a receptor(s) on the cell surface related to the activation of the iNOS gene. Further studies are required to confirm the possibility.

In conclusion, we demonstrate that Korean mistletoe lectin, KML-IIU, and its subchains induce NO production via activation of the iNOS gene expression. The

subchains of the KML-IIU, which showed lower cytotoxicity and higher NO inducement, may be good candidates for a potent immunomodulator to enhance the effector functions of innate immune cells.



## References

1. Bantel H., Engels I.H., Voelter W., Schulze-Osthoff K. and Wesselborg S., Mistletoe lectin activates caspase-8/FLICE independently of death receptor signaling and enhances anticancer drug-induced apoptosis. *Cancer Res.* 59: 2083–2090, 1999.
2. Beuth J., Stoffel B., Ko H.L., Jeljaszewicz J. and Pulverer G., Immunomodulating ability of galactoside-specific lectin standardized and depleted mistletoe extract. *Arzneimittelforschung* 45: 1240-1242, 1995.
3. Hajto T., Hostanska K., Fischer J. and Saller R., Immunomodulatory effects of *Viscum album* agglutinin-I on natural immunity. *Anticancer Drugs* 8(Suppl 1) S43–S46, 1997.
4. Franz H., Mistletoe lectins and their A and B chains. *Oncologia* 43(Suppl 1) 23–34, 1986.
5. Ribereau-Gayon G., Jung M.L., Baudino S., Salle G. and Beck J.P., Effects of mistletoe (*Viscum album L.*) extracts on cultured tumor cells. *Experientia* 42: 594–599, 1986.
6. Ribereau-Gayon G., Dumont S., Muller C., Jung M.L., Poindron P. and Anton R., Mistletoe lectins I, II and III induce the production of cytokines by cultured human monocytes. *Cancer Lett.* 109: 33–38, 1996.
7. Hajto T., Hostanska K. and Gabius H.J., Modulatory potency of the beta-galactoside-specific lectin from mistletoe extract (Iscador) on the host defense system in vivo in rabbits and patients. *Cancer Res.* 49: 4803–4808, 1989.
8. Lavelle E.C., Grant G., Pusztai A., Pfüller U. and O'Hagan D.T., Mucosal immunogenicity of plant lectins in mice. *Immunology* 99: 30–37, 2000.
9. Lavelle E.C., Grant G., Pusztai A., Pfüller U. and O'Hagan D.T., The identification of plant lectins with mucosal adjuvant activity. *Immunology* 102: 77–86, 2001.
10. Soler M.H., Stoeva S. and Voelter W., Complete amino acid sequence of the B chain of mistletoe lectin I. *Biochem. Biophys. Res. Commun.* 246: 596–601, 1998.
11. Vervecken W., Kleff S., Pfuller U. and Bussing A., Induction of apoptosis by mistletoe lectin I and its subunits. No evidence for cytotoxic effects caused by isolated A- and B-chains. *Int. J. Biochem. Cell Biol.* 32: 317-326, 2000.
12. Yoon T.J., Yoo Y.C., Choi O.B., Do M.S., Kang T.B., Lee S.W., Azuma I. and Kim J.B., Inhibitory effect of Korean mistletoe (*Viscum album coloratum*) extract on tumor angiogenesis and metastasis of haematogenous and non-haematogenous tumor cells in mice. *Cancer Lett.* 97: 83-91, 1995.
13. Yoon T.J., Yoo Y.C., Kang T.B., Her E., Kim S.H., Kim K., Azuma I. and Kim J.B., Cellular and humoral adjuvant activity of lectins isolated from Korean mistletoe (*Viscum album coloratum*). *Int. Immunopharmacol.* 1: 881-889, 2001.
14. Männel D.N., Becker H., Gundt A., Kist A. and Franz H., Induction of tumor necrosis factor expression by a lectin from *Viscum album*. *Cancer Immunol. Immunothera.* 33: 177–182, 1991.
15. Xie Q. and Nathan C., The high-output nitric oxide pathway: role and regulation. *J. Leukoc. Biol.* 56: 576–582, 1994.
16. Deng W., Thiel B., Tannenbaum C.S., Hamilton T.A. and Stuehr D.J., Synergistic cooperation between T cell lymphokines for induction of the nitric oxide synthase gene in murine peritoneal macrophages. *J. Immunol.* 151: 322–329, 1993.

17. Moncada S., Palmer R.M. and Higgs E.A., Nitric oxide: physiology, pathophysiology, and pharmacology. *Pharmacol. Rev.* 43: 109–142, 1991.
18. Nathan C, Nitric oxide as a secretory product of mammalian cells. *FASEB J.* 6: 3051–3064, 1992.
19. Lowenstein C.J. and Snyder S.H., Nitric oxide, a novel biologic messenger. *Cell* 70: 705–707, 1992.
20. Stuehr D.J. and Nathan C.F., Nitric oxide. A macrophage product responsible for cytostasis and respiratory inhibition in tumor target cells. *J. Exp. Med.* 169: 1543–1555, 1989.
21. Nathan C.F. and Hibbs J.B. Jr., Role of nitric oxide synthesis in macrophage antimicrobial activity. *Curr. Opin. Immunol.* 3: 65–70, 1991.
22. Jenkins D.C., Charles I.G., Thomsen L.L., Moss D.W., Holmes L.S., Baylis S.A., Rhodes P., Westmore K., Emson P.C. and Moncada S., Roles of nitric oxide in tumor growth. *Proc. Natl. Acad. Sci. USA* 92: 4392–4396, 1995.
23. MacMicking J., Sie Q. and Nathan C., Nitric oxide and macrophage function. *Annu. Rev. Immunol.* 15: 323–350, 1997.
24. Chan J., Ganaka K., Carroll D., Flynn J. and Bloom B.R., Effects of nitric oxide synthase inhibitors on murine infection with *Mycobacterium tuberculosis*. *Infect. Immun.* 63: 736–740, 1995.
25. Nilcholson S., Bonecini-Almeida Mda G., Lapa e Silva J.R., Nathan C., Xie Q.W., Mumford R., Weidner J.R., Calaycay J., Geng J., Boechat N., Linhares C., Rom W. and Ho J.L., Inducible nitric oxide synthase in pulmonary alveolar macrophages from patients with tuberculosis. *J. Exp. Med.* 183: 2293–2302, 1996.
26. Yoon T.J., Yoo Y.C., Kang T.B., Shimazaki K., Song S.K., Lee K.H., Kim S.H., Park C.H., Azuma I. and Kim J.B., Lectins isolated from Korean mistletoe (*Viscum album coloratum*) induce apoptosis in tumor cells. *Cancer Lett.* 136: 33–40, 1999.
27. Kang T.B., Kim J.B., Yoo Y.C., Yoon T.J., Song S.K. and Do M.S., Studies on the immunological function of Korean mistletoe lectin; Tumor necrosis factor- $\alpha$  inducing activity of Korean mistletoe lectin and its subchains. *Korean J. Lab. Anim. Sci.* 17: 187–194, 2001.
28. Smith P.K., Krohn R.I., Hermanson G.T., Mallia A.K., Gartner F.H., Provenzano M.D., Fujimoto E.K., Goeke N.M., Olson B.J. and Klenk D.C., Measurement of protein using bicinonic acid. *Anal. Biochem.* 150: 76–85, 1985.
29. Laemmli U., Cleavage of structural proteins during assembly of the head of bacteriophage T4. *Nature* 227: 680–685, 1970.
30. Goodwin C.J., Holt S.J., Downes S. and Marshall N.J., Microculture tetrazolium assays: a comparison between two new tetrazolium salts, XTT and MTS. *J. Immunol. Meth.* 179: 95–103, 1995.
31. Xie Q.W., Cho H., Calaycay J., Mumford R.A., Swiderer K.M. et al, Cloning and characterization of inducible nitric oxide synthase from mouse macrophage. *Science* 256: 225–228, 1992.
32. Trayhurn P., Duncan J.S. and Rayner D.V., Acute cold-induced suppression of ob (obese) gene expression in white adipose tissue of mice: mediation by the sympathetic system. *Biochem. J.* 311: 729–733, 1995.

33. Moore W.M., Webber R.K., Fok K.F., Jerome G.M., Connor J.R. et al, 2-Iminopiperidine and other 2-iminoazaheterocycles as potent inhibitors of human nitric oxide synthase isoforms. *J. Med. Chem.* 39: 669–672, 1996.
34. Connor J.R., Manning P.T., Settle S.L., Moore W.M., Jerome G.M. et al, Suppression of adjuvant-induced arthritis by selective inhibition of inducible nitric oxide synthase. *Eur. J. Pharmacol.* 273: 15-24, 1995.
35. Mittal C.K., Nitric oxide synthase: involvement of oxygen radicals in conversion of L-arginine to nitric oxide. *Biochem. Biophys. Res. Commun.* 193: 126–132, 1993.
36. Hajto T., Hostanska K., Frei K., Rordorf C. and Gabius H.J., Increased secretion of tumor necrosis factors alpha, interleukin 1, and interleukin 6 by human mononuclear cells exposed to beta-galactoside-specific lectin from clinically applied mistletoe extract. *Cancer Res.* 50: 3322–3326, 1990.
37. Mannel D.N., Becker H., Gundt A., Kist A. and Franz H., Induction of tumor necrosis factor expression by a lectin from *Viscum album*. *Cancer Immunol. Immunother.* 33: 177–182, 1991.
38. Metzner G., Franz H., Kindt A., Fahlbusch B. and Suss J., The in vitro activity of lectin I from mistletoe (ML I) and its isolated A and B chains on functions of macrophages and polymorphonuclear cells. *Immunobiology* 169: 461–471, 1985.
39. Nicholson S., Bonecini-Almeida M.G., Silva J.R.L., Nathan C., Xie Q.-W. et al, Inducible nitric oxide synthase in pulmonary alveolar macrophages from patients with tuberculosis. *J. Exp. Med.* 183: 2293–2302, 1996.
40. MacMicking J.D., North R.J., LaCourse R., Mudgett J.S., Shah S., et al., Identification of NOS2 as a protective locus against tuberculosis. Submitted, 1996.
41. Anstey N., Weinberg J., Hassanali M., Mwaikambo E., Manyenga D. et al, Nitric oxide in Tanzanian children with malaria. *J. Exp. Med.* 184: 557–568, 1996.
42. Stamler J.S., S-nitrosothiols and the bioregulatory actions of nitrogen oxides through reactions with thiol groups. *Curr. Top. Microbiol. Immunol.* 196: 19–36, 1996.
43. Klebanoff S.J., Oxygen metabolites from phagocytes, In: Gallin J.I., Goldstein I.M. and Snyderman R. (Eds.), *Inflammation: Basic Principles and Clinical Correlates*. Raven, New York, 1992, pp. 541–588.
44. Yim C.-Y., Bastian N.R., Smith J.C., Hibbs J.B. Jr. and Samlowski W.E., Macrophage nitric oxide synthesis delays progression of ultraviolet light-induced murine skin cancers. *Cancer Res.* 53: 5507-5511, 1993.
45. Xie K., Huang S., Dong Z., Juang S.-H., Gutman M. et al, Transfection with the inducible nitric oxide synthase gene suppresses tumorigenicity and abrogates metastasis by K1735 murine melanoma cells. *J. Exp. Med.* 181: 1333-1343, 1995.
46. Mannick J.B., Asano K., Izumi K., Kieff E. and Stamler J.S., Nitric oxide produced by human B lymphocytes inhibits apoptosis and Epstein-Barr virus reactivation. *Cell* 79: 1137-1146, 1994.
47. Timoshenko A.V., Lan Y., Gabius H.J. and Lala P.K., Immunotherapy of C3H/HeJ mammary adenocarcinoma with interleukin-2, mistletoe lectin or their combination: effects on tumour growth, capillary leakage and nitric oxide (NO) production. *Eur. J. Cancer* 37: 1910–1920, 2001.
48. Langer M., Rothe M., Eck J., Mockel B. and Zinke H., A nonradioactive assay for

- ribosome-inactivating proteins. *Anal. Biochem.* 243: 150–153, 1996.
49. Langer M., Mockel B., Eck J., Zinke H. and Lentzen H., Site-specific mutagenesis of mistletoe lectin: the role of RIP activity in apoptosis. *Biochem. Biophys. Res. Commun.* 264: 944–948, 1999.

## **List of Tables**

Table 1. Inhibition of NO production induced by KML-IIU or its subchains by iNOS-specific inhibitors.

## List of Figures

- Fig. 1 SDS-PAGE analysis of KML-IIU and its subchains under reducing condition. The proteins were separated by 12.5% SDS-PAGE and stained with Coomassie blue.
- Fig. 2 Hemagglutination of human erythrocytes (type B) treated with the subchain A or the B as derived from the KML-IIU hololectin. Fifty  $\mu\text{l}$  of samples in two-fold serial dilution were mixed with an equal volume of erythrocyte suspension (2% in PBS) and incubated for 1 h at room temperature. Untreated erythrocytes were used as a control.
- Fig. 3 Cytotoxic effect of KML-IIU and its subchains. Cells ( $1 \times 10^5$  cells/well) were incubated with the indicated concentrations of samples for 24 h in 96-well plates. The cell viability was measured via the XTT method. The data were represented as the mean + SD in triplicate.
- Fig. 4 Concentration-response effects of KML-IIU and its subchains on NO production in RAW264.7 cells. Cells ( $5 \times 10^5$  cells) were plated in 24-well plates and stimulated with the indicated concentrations of lectin samples plus IFN- $\gamma$  (50 U/ml) for 24 h. Nitric oxide release was measured by the Griess method and represented as the mean + SD in triplicate. The symbols \* and \*\*\* indicate the statistical P values  $<0.01$  and  $<0.001$ , respectively, as compared to the group treated with IFN- $\gamma$  alone.
- Fig. 5 The levels of iNOS mRNA in RAW264.7 cells treated KML-IIU and its subchains. The cells ( $2.5 \times 10^6$  cells) were treated with KML-IIU or its subchains in the presence of 100 U/ml IFN- $\gamma$ . After 12 h incubation, the cells were lysed and the total cellular RNA isolated. The presence of iNOS mRNA was detected by Northern blot analysis with an iNOS-specific probe. RNA loading of the gel for Northern blot analysis was assessed by hybridization with an 18S ribosomal RNA-specific probe.

Inhibitors	Media alone	LPS	KML-IIU	A chain	B chain
-	19±1	68±6	23±2	42±1	45±2
<i>NIL(mM)</i>					
1	5±1	18±2	6±1	11±1	10±1
0.1	14±4	42±1	16±2	26±1	23±4
0.01	16±1	64±2	23±3	41±1	31±2
<i>NAME</i>					
1 mM	5±3	42±1	9±1	18±1	22±1

RAW264.7 cells ( $5 \times 10^5$  cells) were pre-incubated for 2 h with NIL or NAME. The cells were then treated with the mistletoe lectin or its subchains plus IFN- $\gamma$  and cultured further for 24 h. Nitric oxide release was measured by the Griess method and represented as the mean + SD in triplicate.

Table 1

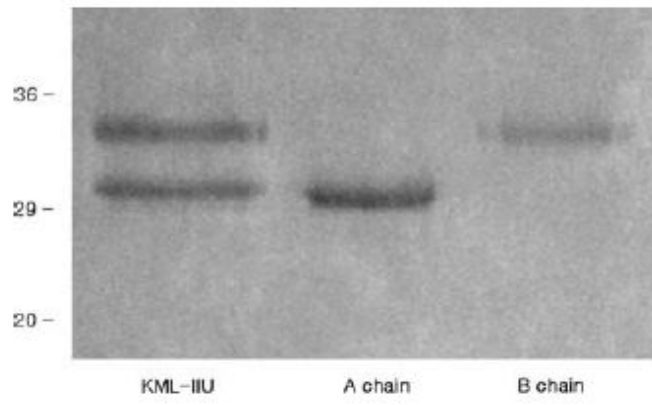


Fig. 1.



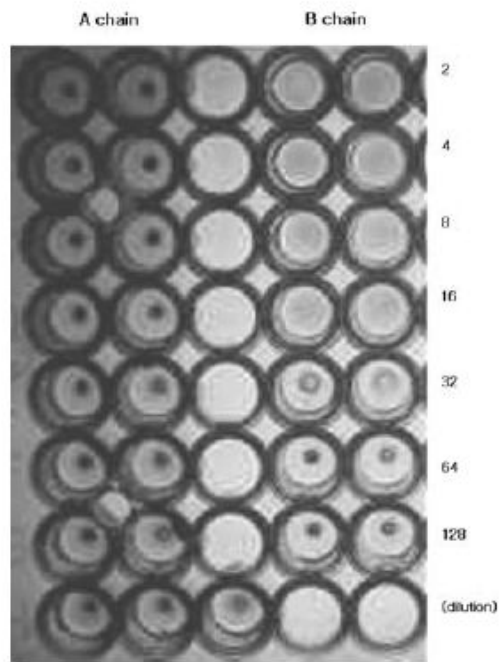


Fig.2.

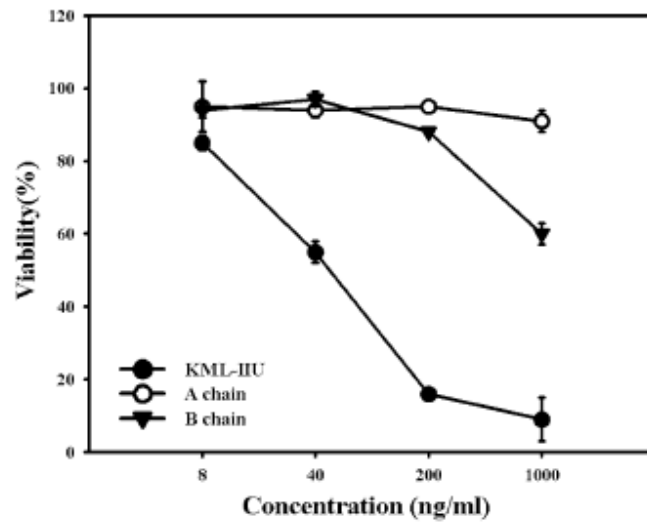


Fig. 3.

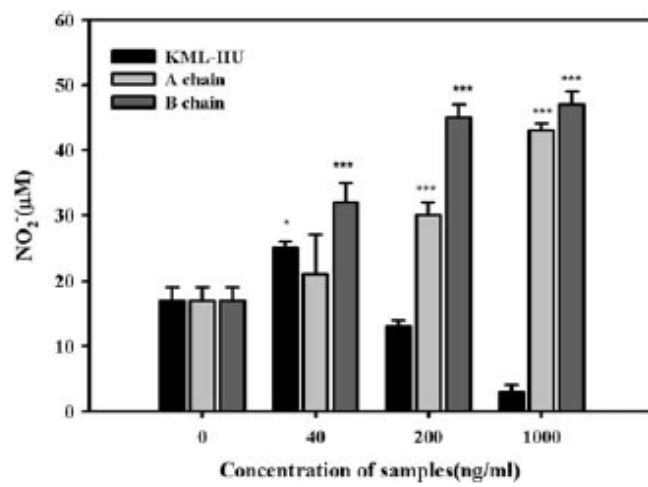


Fig. 4.

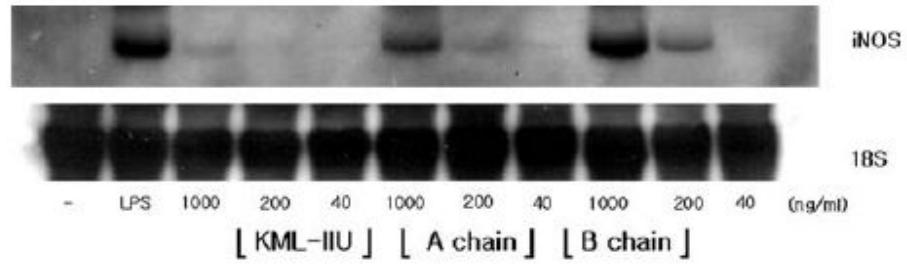


Fig. 5.