

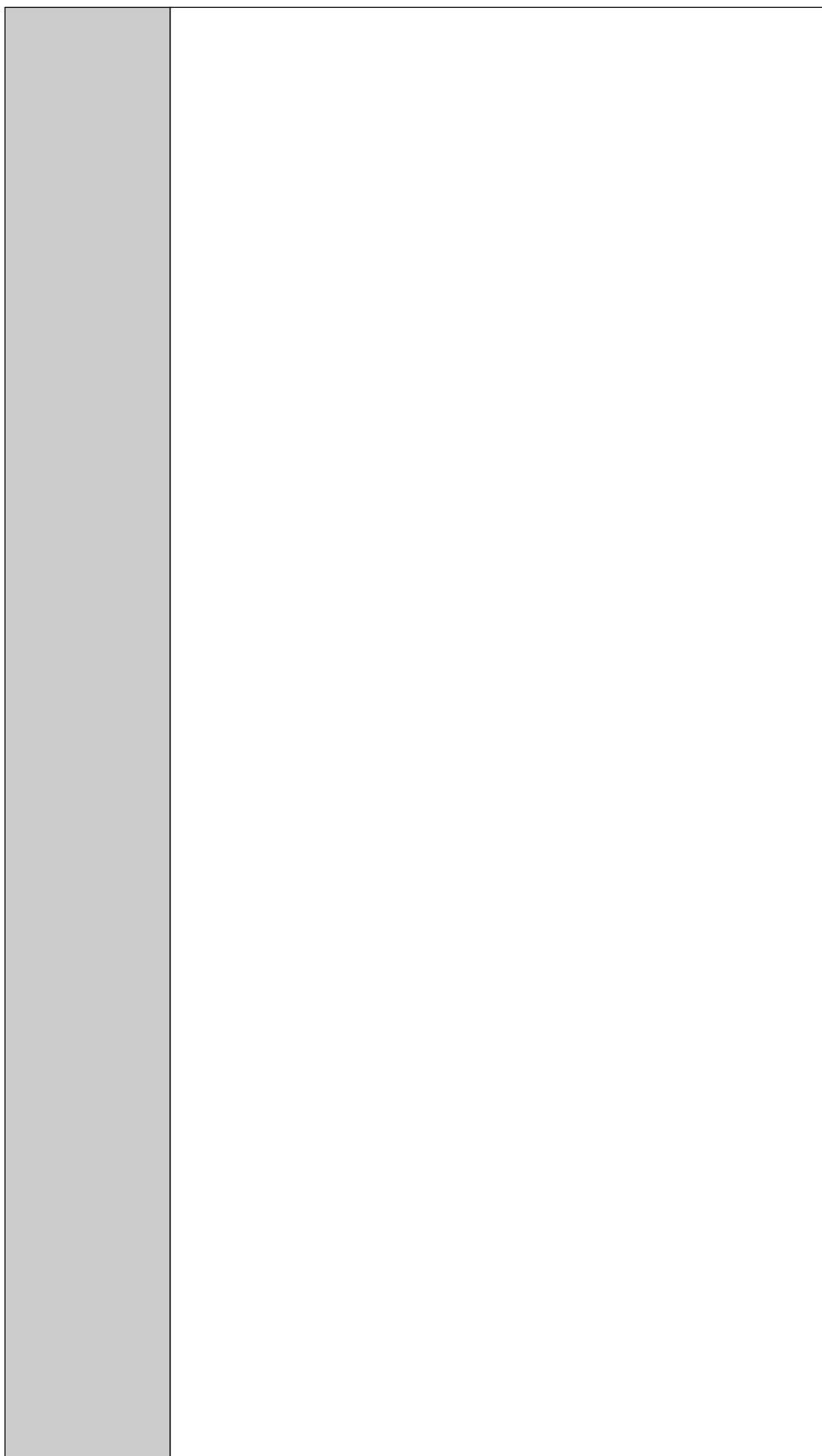
This document is downloaded from DR-NTU, Nanyang Technological University Library, Singapore.

Title	A probabilistic memetic framework
Author(s)	Nguyen, Quang Huy; Ong, Yew Soon; Lim, Meng-Hiot
Citation	Nguyen, Q. H., Ong, Y. S., & Lim, M. H. (2009) Probabilistic Memetic Framework. IEEE Transactions on Evolutionary Computation. 13(3), 604-623.
Date	2009
URL	<a href="http://hdl.handle.net/10220/6243">http://hdl.handle.net/10220/6243</a>

This document is downloaded from DR-NTU, Nanyang Technological University Library, Singapore.

Rights	© 2009 IEEE. Personal use of this material is permitted. However,
--------	---

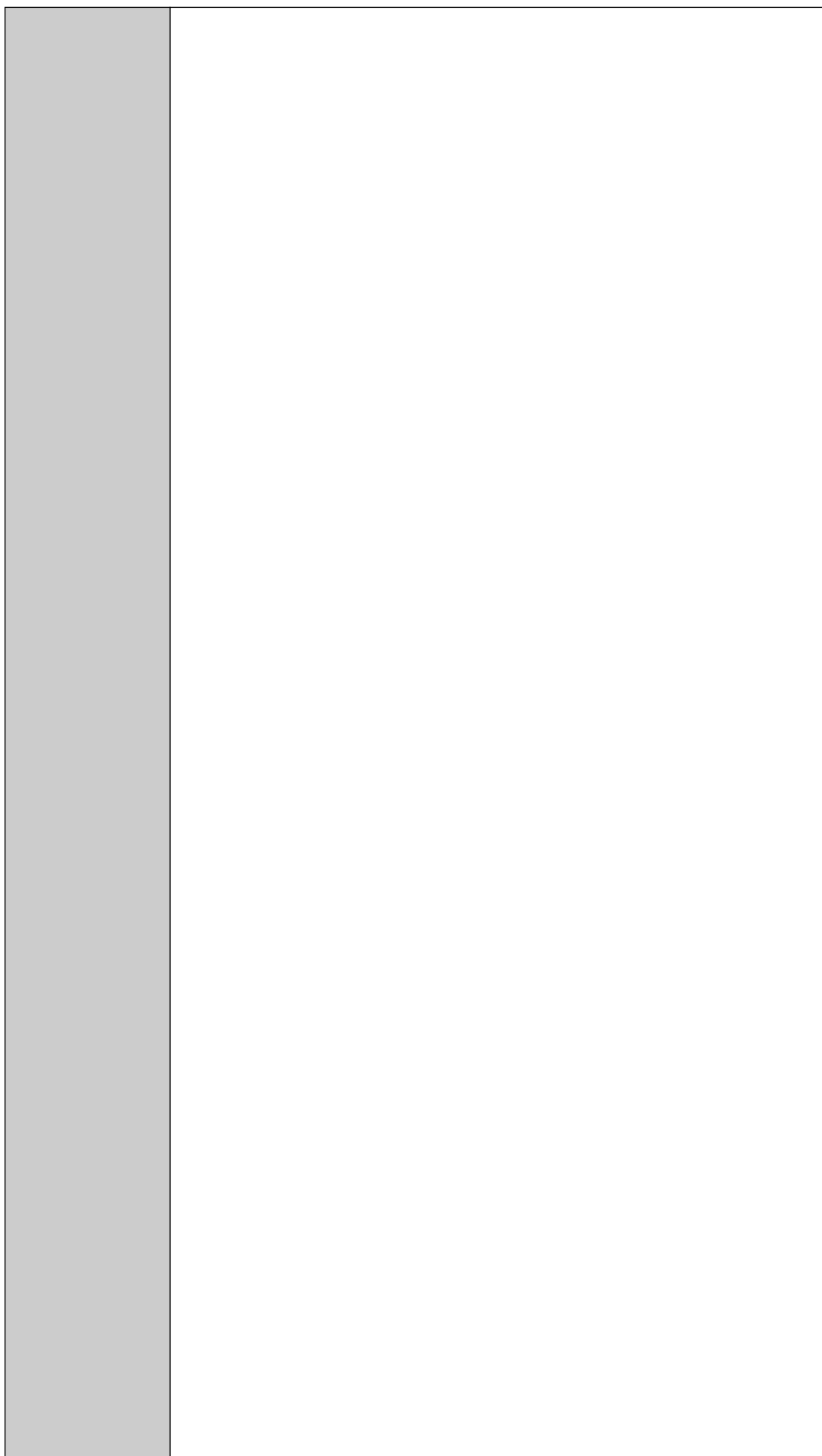
This document is downloaded from DR-NTU, Nanyang Technological University Library, Singapore.



This document is downloaded from DR-NTU, Nanyang Technological University Library, Singapore.

permission to reprint/republish this material for advertising or

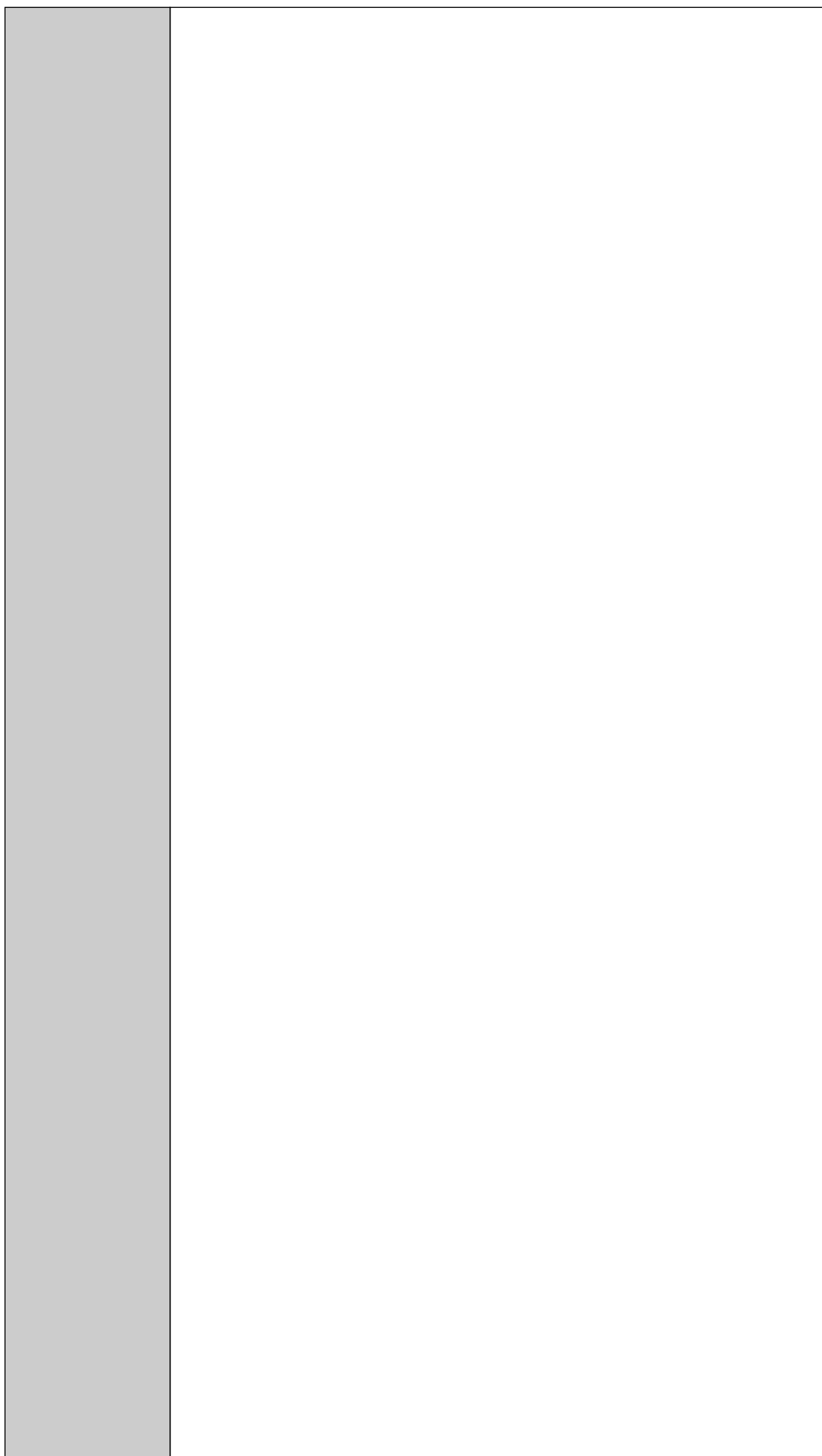
This document is downloaded from DR-NTU, Nanyang Technological University Library, Singapore.



This document is downloaded from DR-NTU, Nanyang Technological University Library, Singapore.

promotional purposes or for creating new collective works for resale or

This document is downloaded from DR-NTU, Nanyang Technological University Library, Singapore.



This document is downloaded from DR-NTU, Nanyang Technological University Library, Singapore.

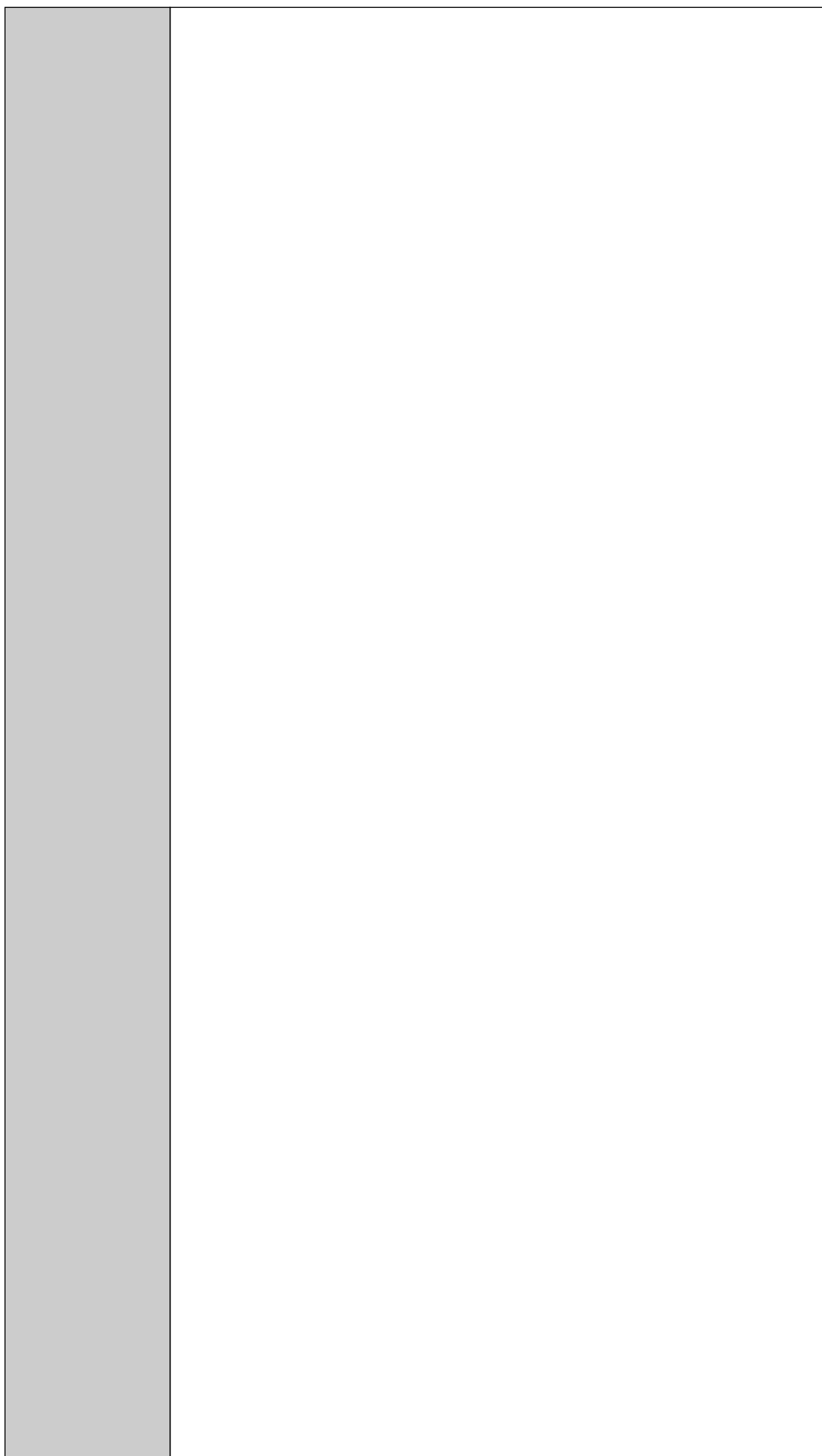
redistribution to servers or lists, or to reuse any copyrighted



This document is downloaded from DR-NTU, Nanyang Technological University Library, Singapore.



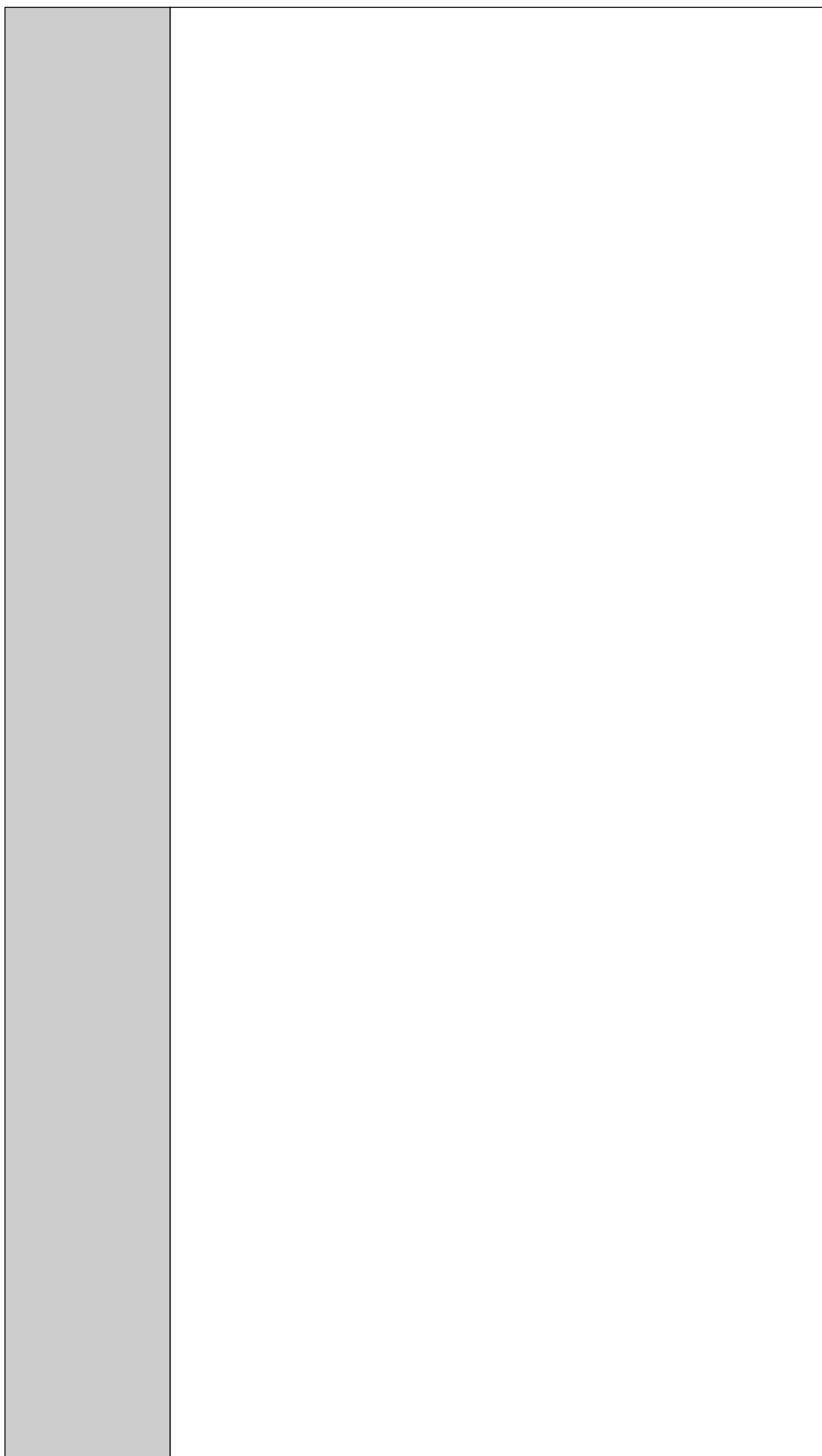
This document is downloaded from DR-NTU, Nanyang Technological University Library, Singapore.



This document is downloaded from DR-NTU, Nanyang Technological University Library, Singapore.

component of this work in other works must be obtained from the IEEE.

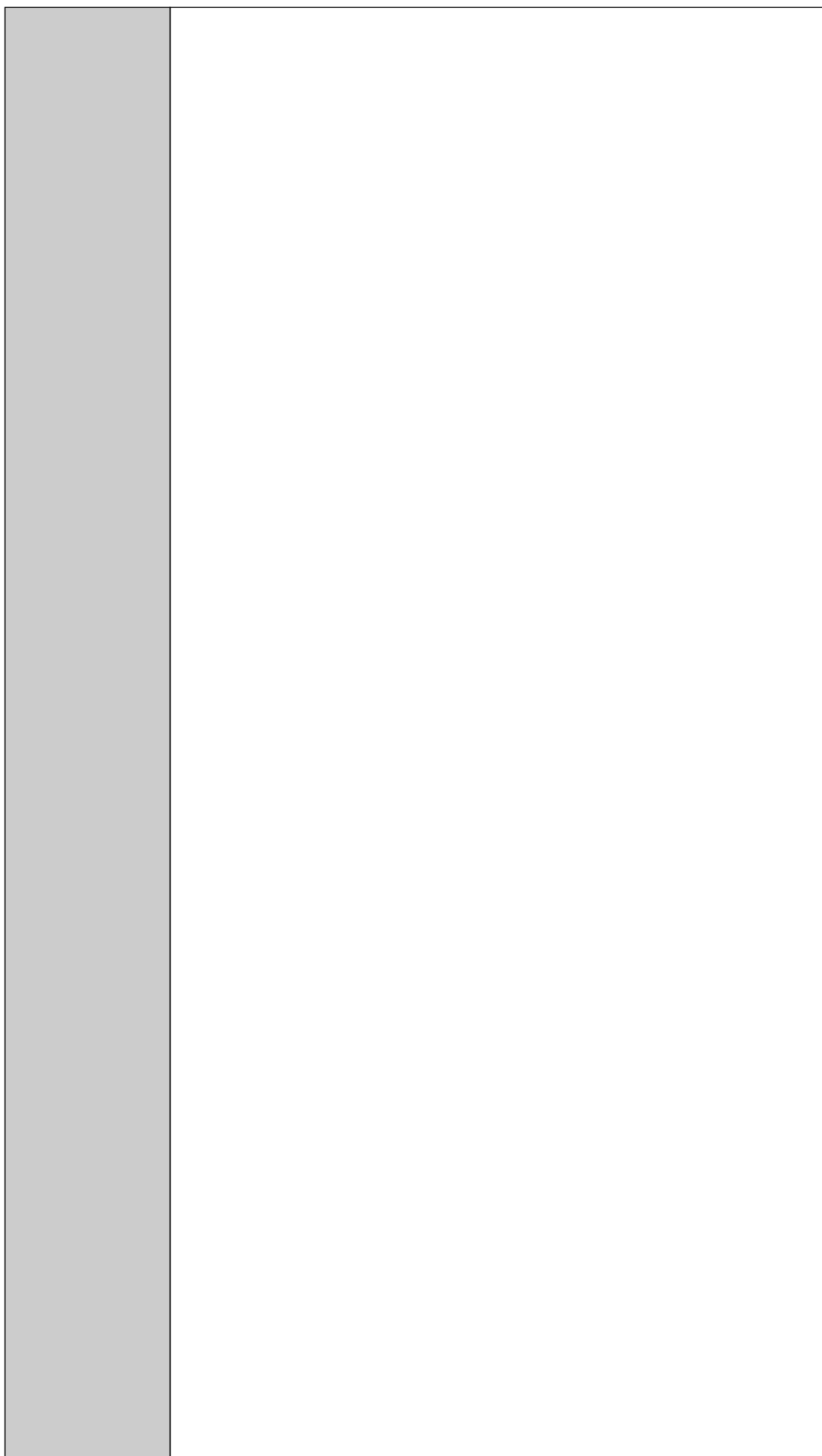
This document is downloaded from DR-NTU, Nanyang Technological University Library, Singapore.



This document is downloaded from DR-NTU, Nanyang Technological University Library, Singapore.

This material is presented to ensure timely dissemination of scholarly

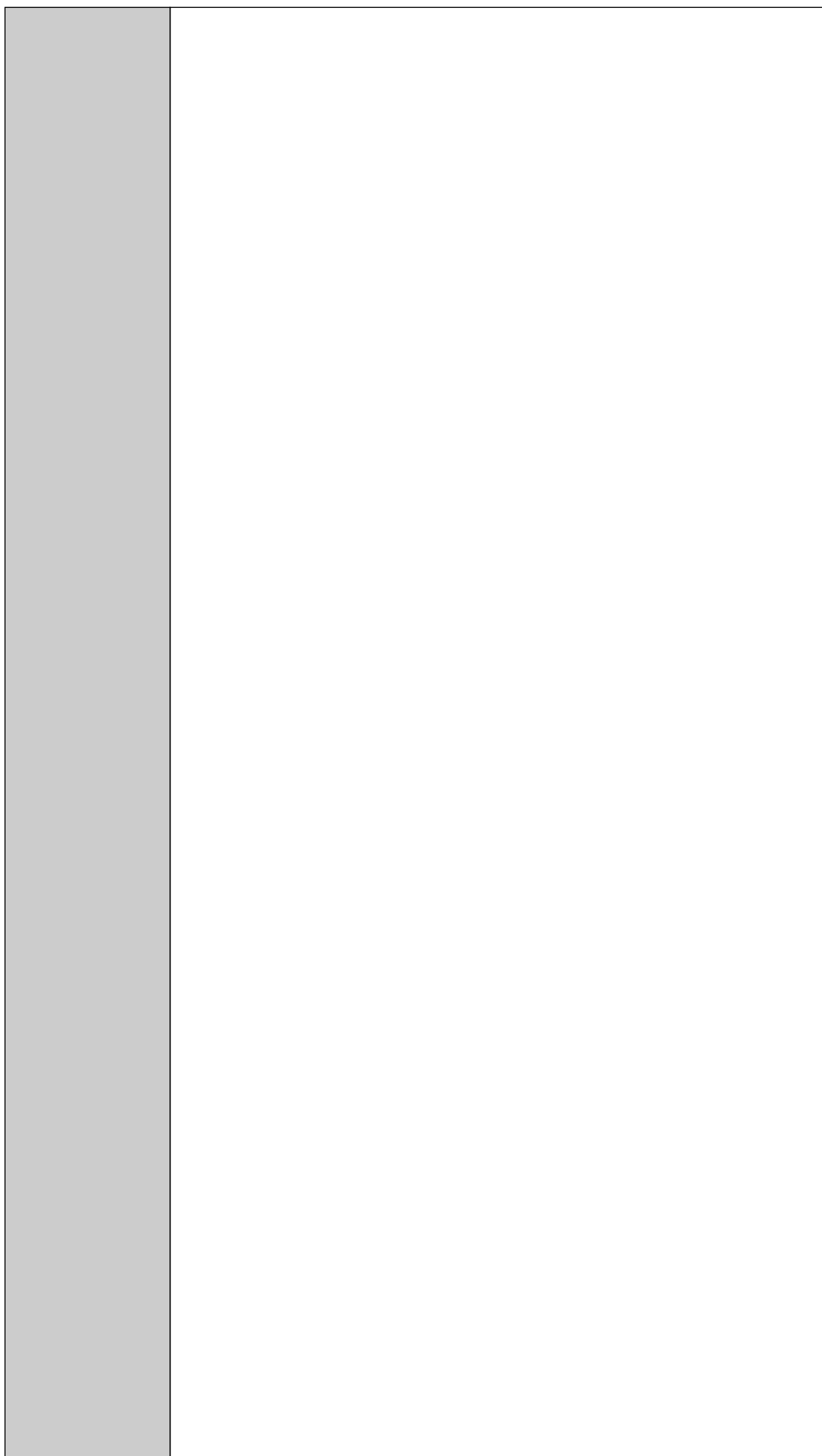
This document is downloaded from DR-NTU, Nanyang Technological University Library, Singapore.



This document is downloaded from DR-NTU, Nanyang Technological University Library, Singapore.

and technical work. Copyright and all rights therein are retained by

This document is downloaded from DR-NTU, Nanyang Technological University Library, Singapore.





This document is downloaded from DR-NTU, Nanyang Technological University Library, Singapore.

authors or by other copyright holders. All persons copying this

This document is downloaded from DR-NTU, Nanyang Technological University Library, Singapore.



This document is downloaded from DR-NTU, Nanyang Technological University Library, Singapore.



This document is downloaded from DR-NTU, Nanyang Technological University Library, Singapore.

information are expected to adhere to the terms and constraints invoked

This document is downloaded from DR-NTU, Nanyang Technological University Library, Singapore.



This document is downloaded from DR-NTU, Nanyang Technological University Library, Singapore.

by each author's copyright. In most cases, these works may not be

This document is downloaded from DR-NTU, Nanyang Technological University Library, Singapore.

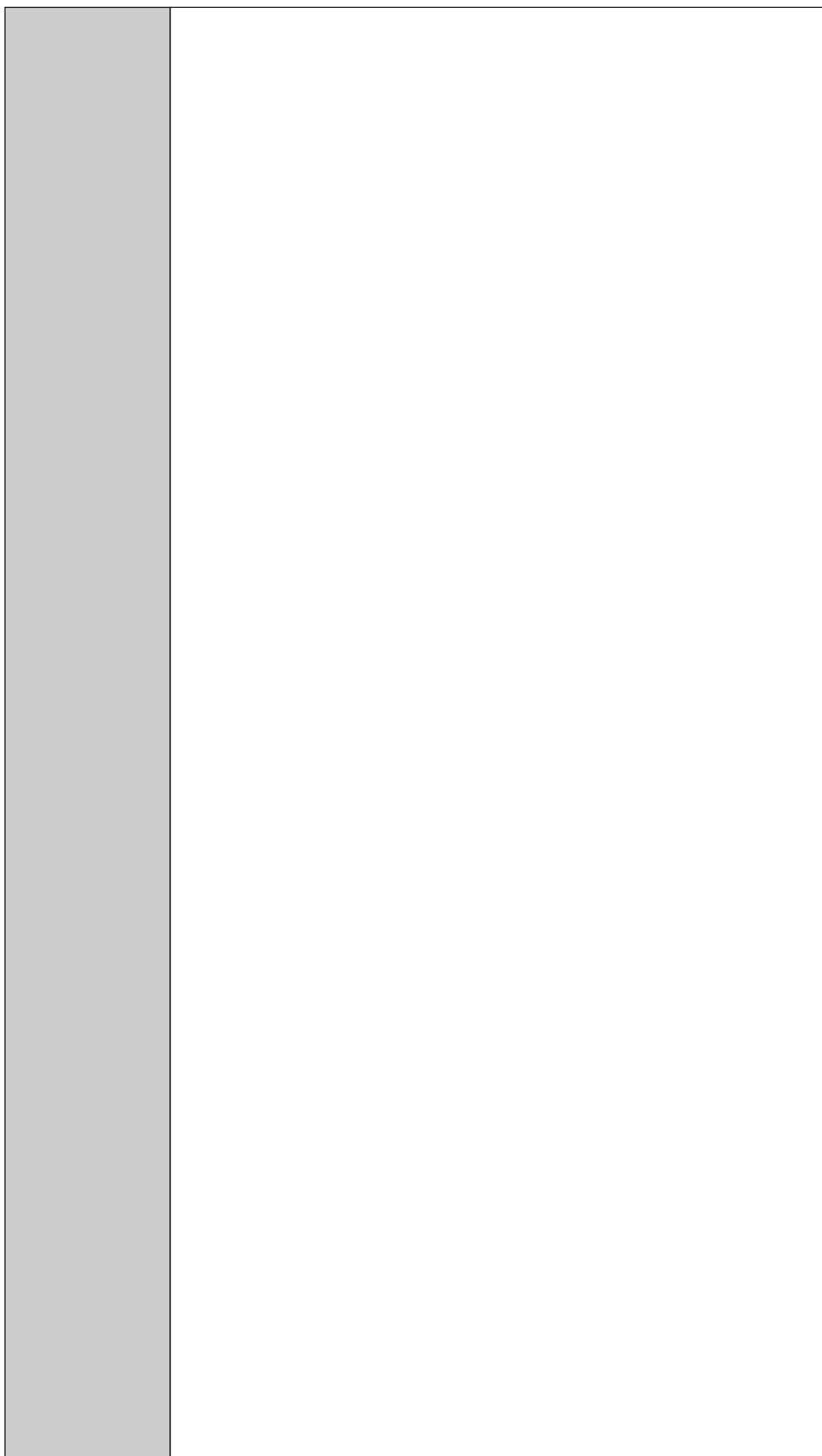


This document is downloaded from DR-NTU, Nanyang Technological University Library, Singapore.

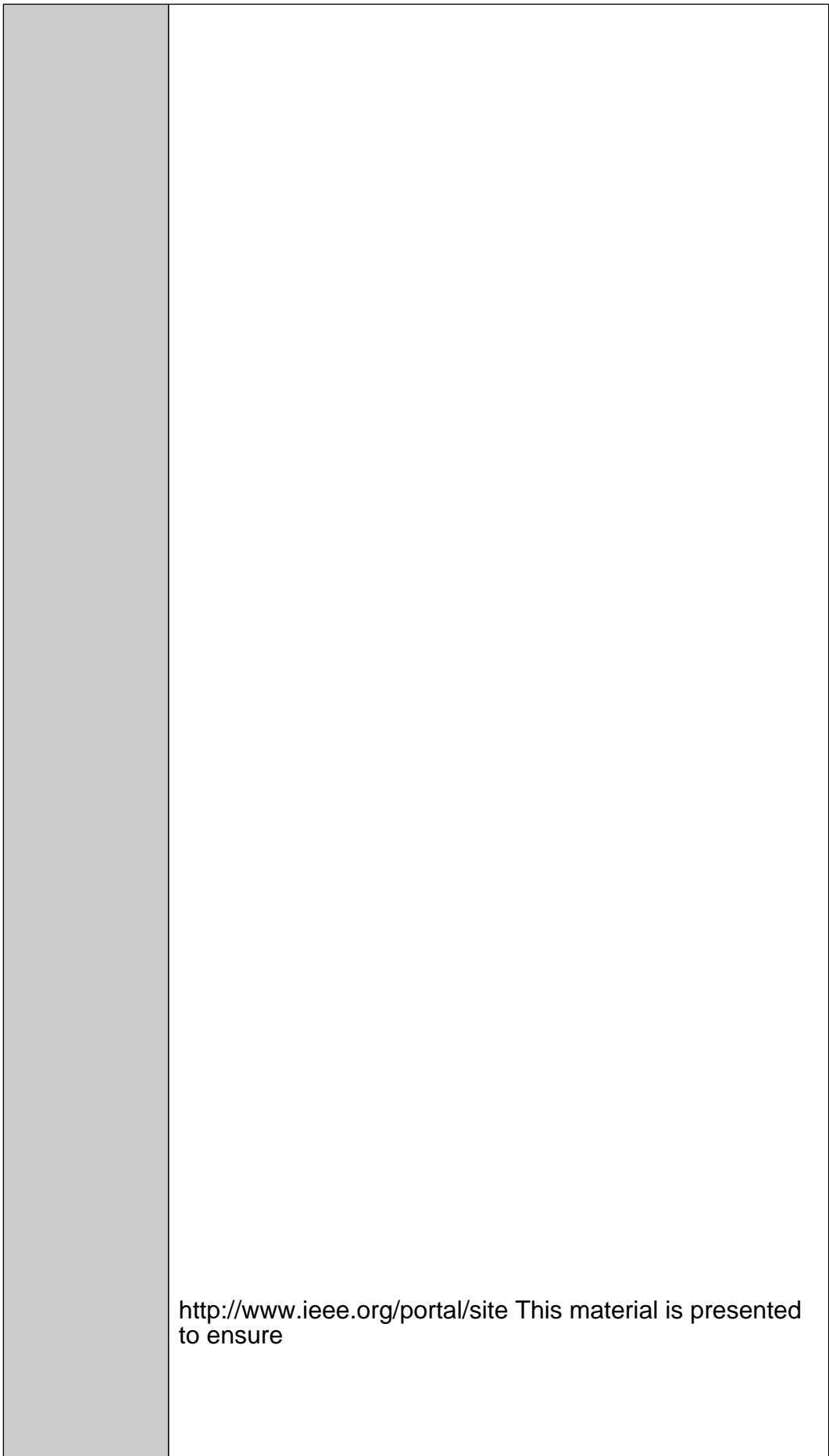
reposted without the explicit permission of the copyright holder.



This document is downloaded from DR-NTU, Nanyang Technological University Library, Singapore.

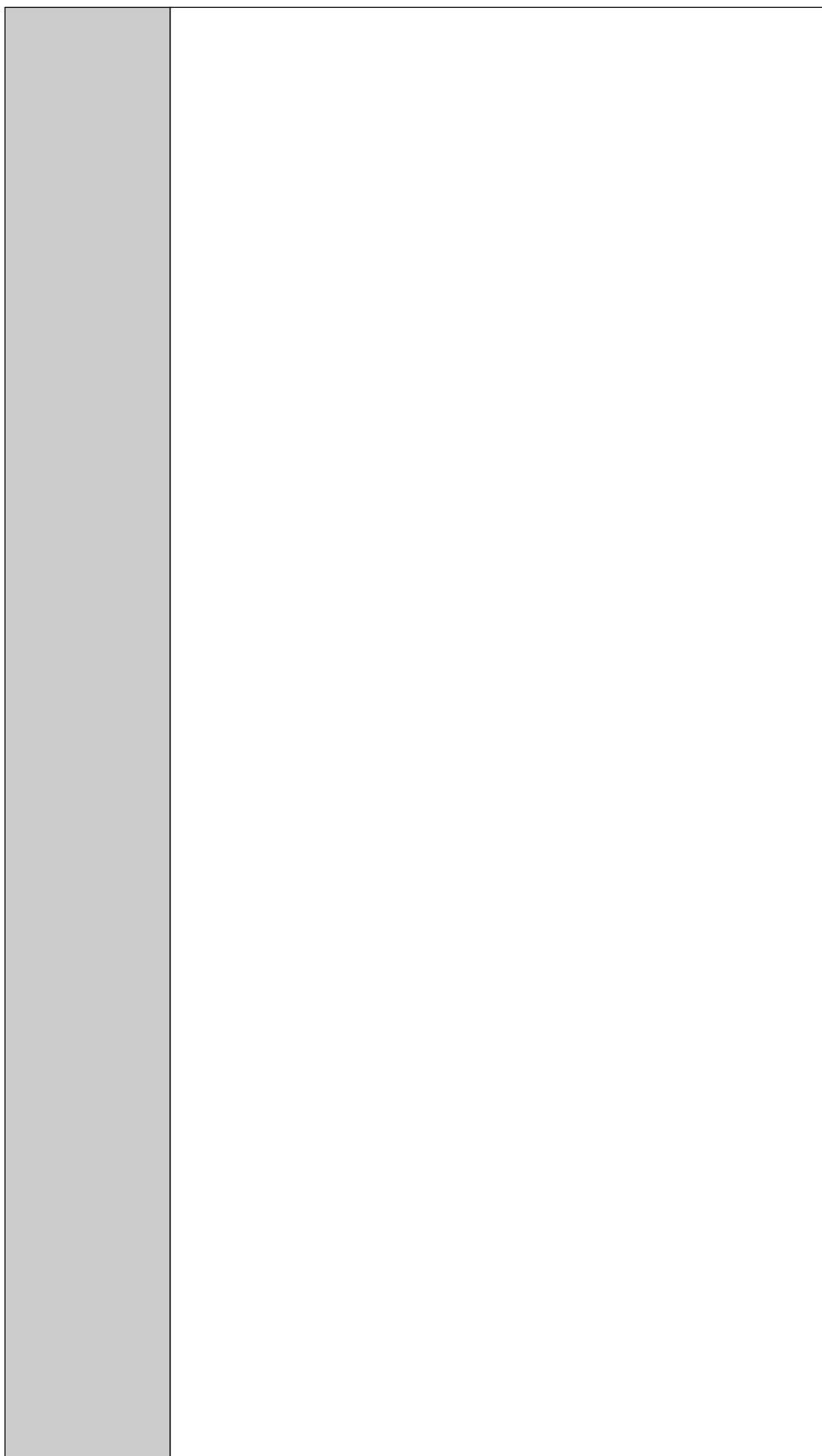


This document is downloaded from DR-NTU, Nanyang Technological University Library, Singapore.



<http://www.ieee.org/portal/site> This material is presented to ensure

This document is downloaded from DR-NTU, Nanyang Technological University Library, Singapore.



This document is downloaded from DR-NTU, Nanyang Technological University Library, Singapore.



This document is downloaded from DR-NTU, Nanyang Technological University Library, Singapore.

timely dissemination of scholarly and technical work.  
Copyright and all

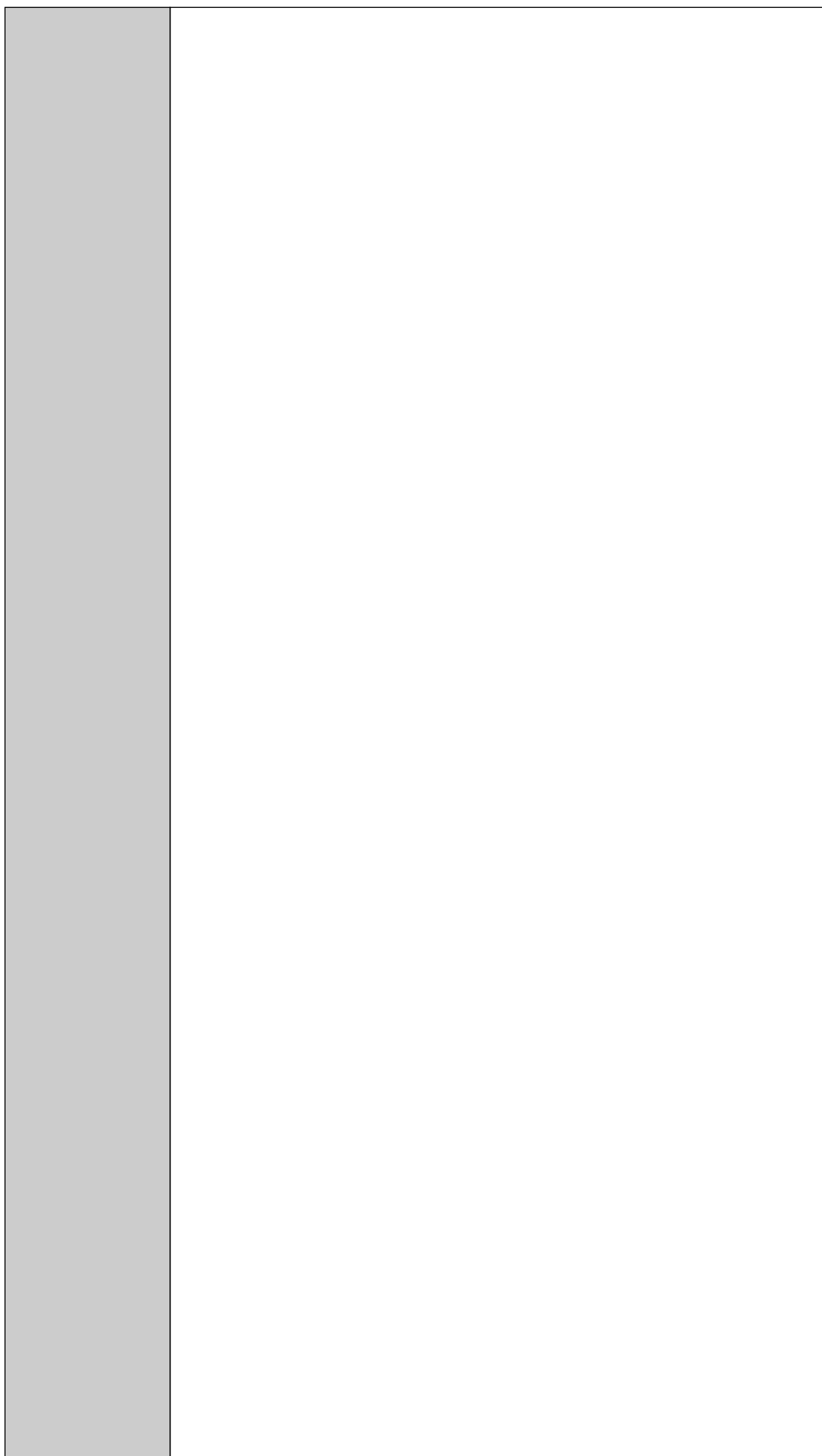
This document is downloaded from DR-NTU, Nanyang Technological University Library, Singapore.



This document is downloaded from DR-NTU, Nanyang Technological University Library, Singapore.

rights therein are retained by authors or by other copyright holders.

This document is downloaded from DR-NTU, Nanyang Technological University Library, Singapore.

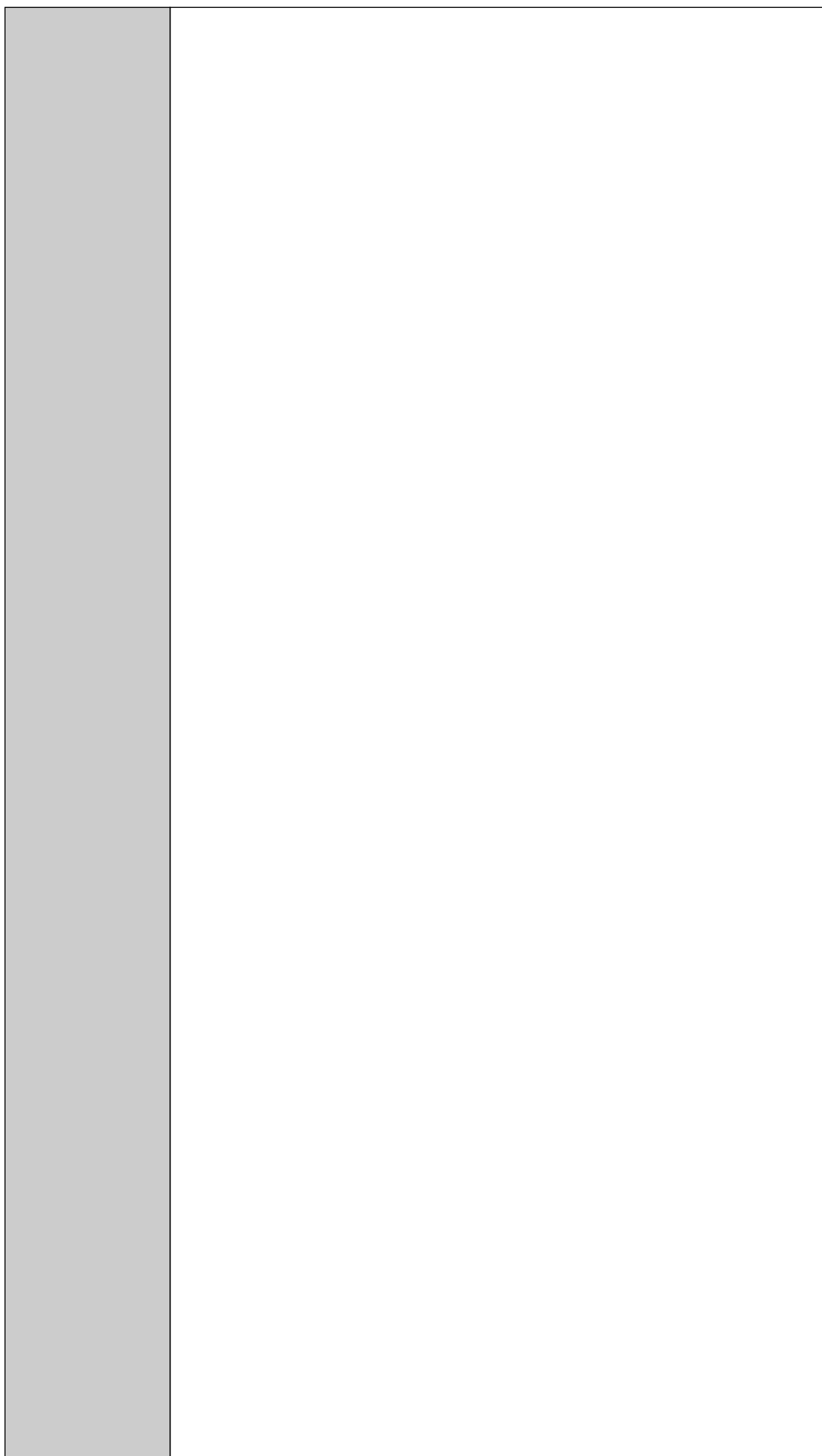




This document is downloaded from DR-NTU, Nanyang Technological University Library, Singapore.

All persons copying this information are expected to adhere to the

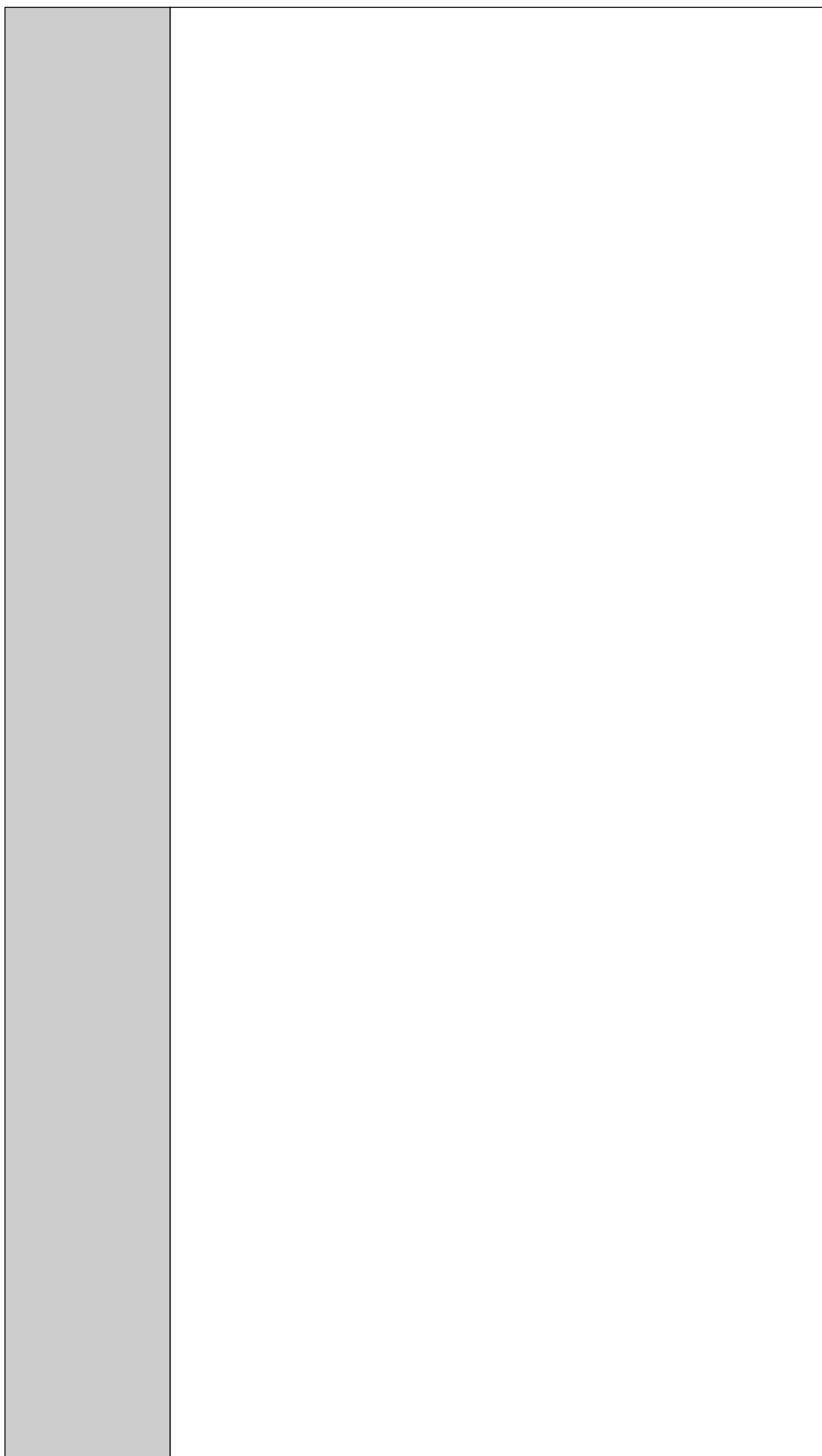
This document is downloaded from DR-NTU, Nanyang Technological University Library, Singapore.



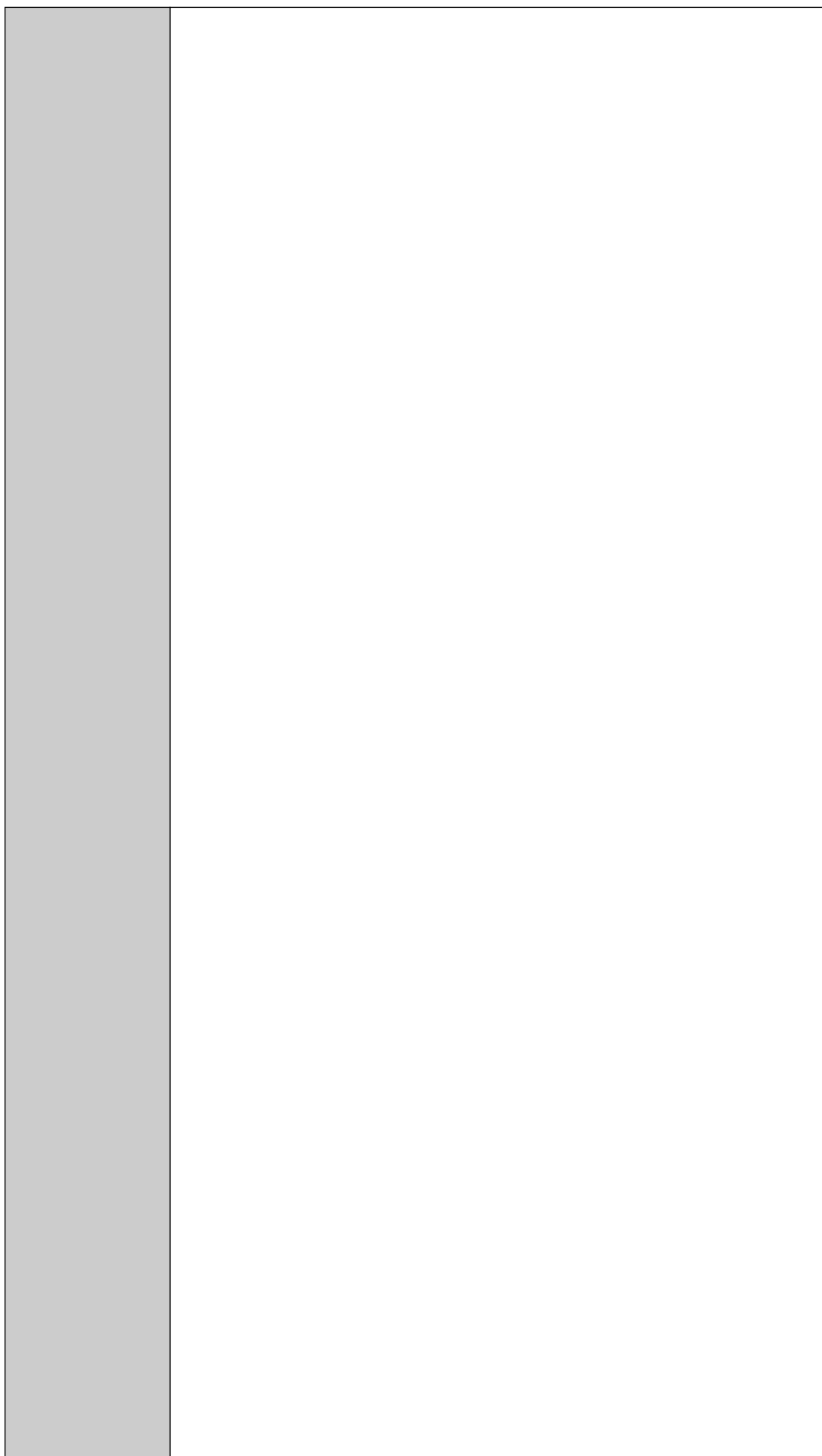
This document is downloaded from DR-NTU, Nanyang Technological University Library, Singapore.

	<p>terms and constraints invoked by each author's copyright. In most</p>
--	--

This document is downloaded from DR-NTU, Nanyang Technological University Library, Singapore.



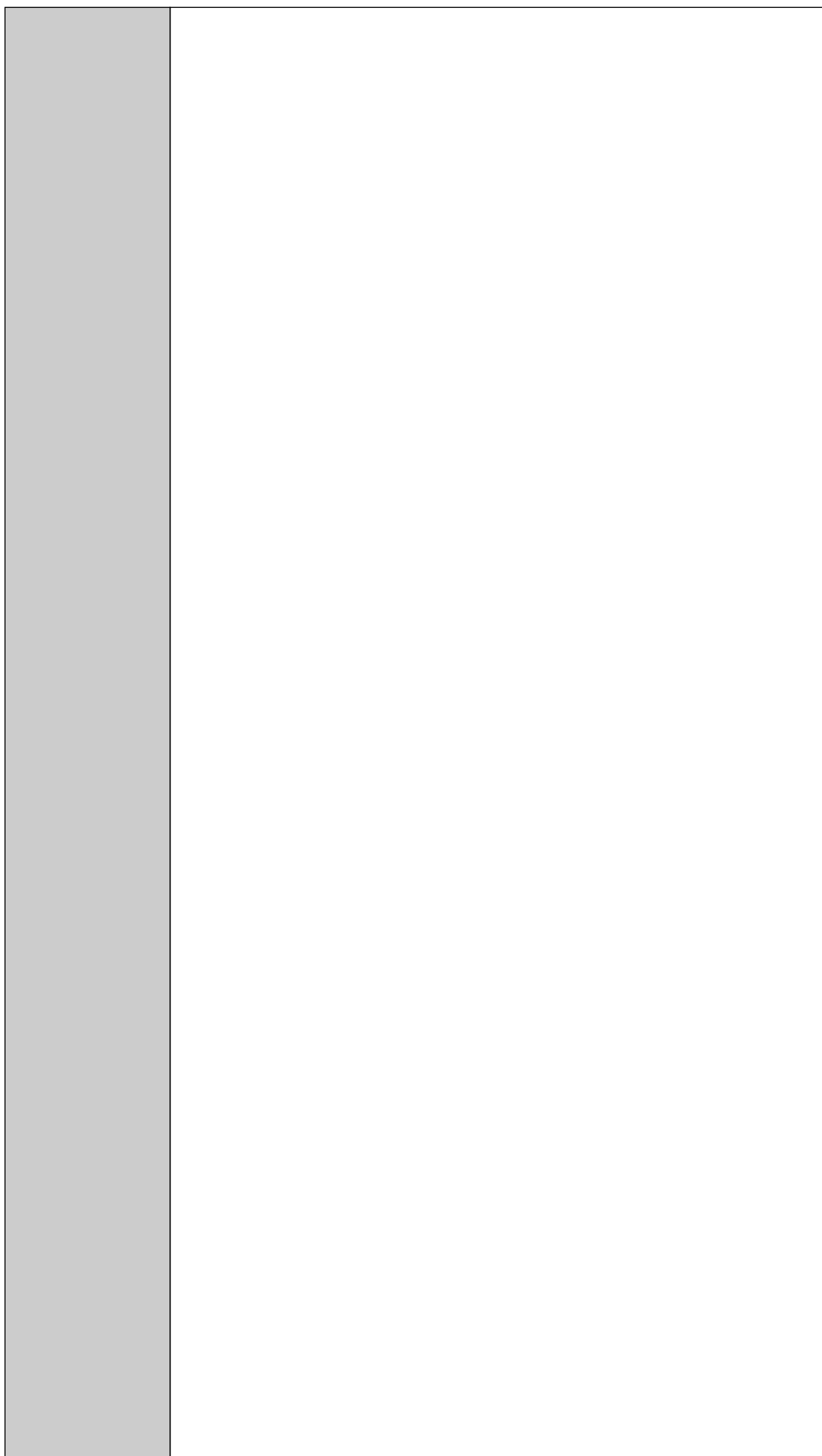
This document is downloaded from DR-NTU, Nanyang Technological University Library, Singapore.



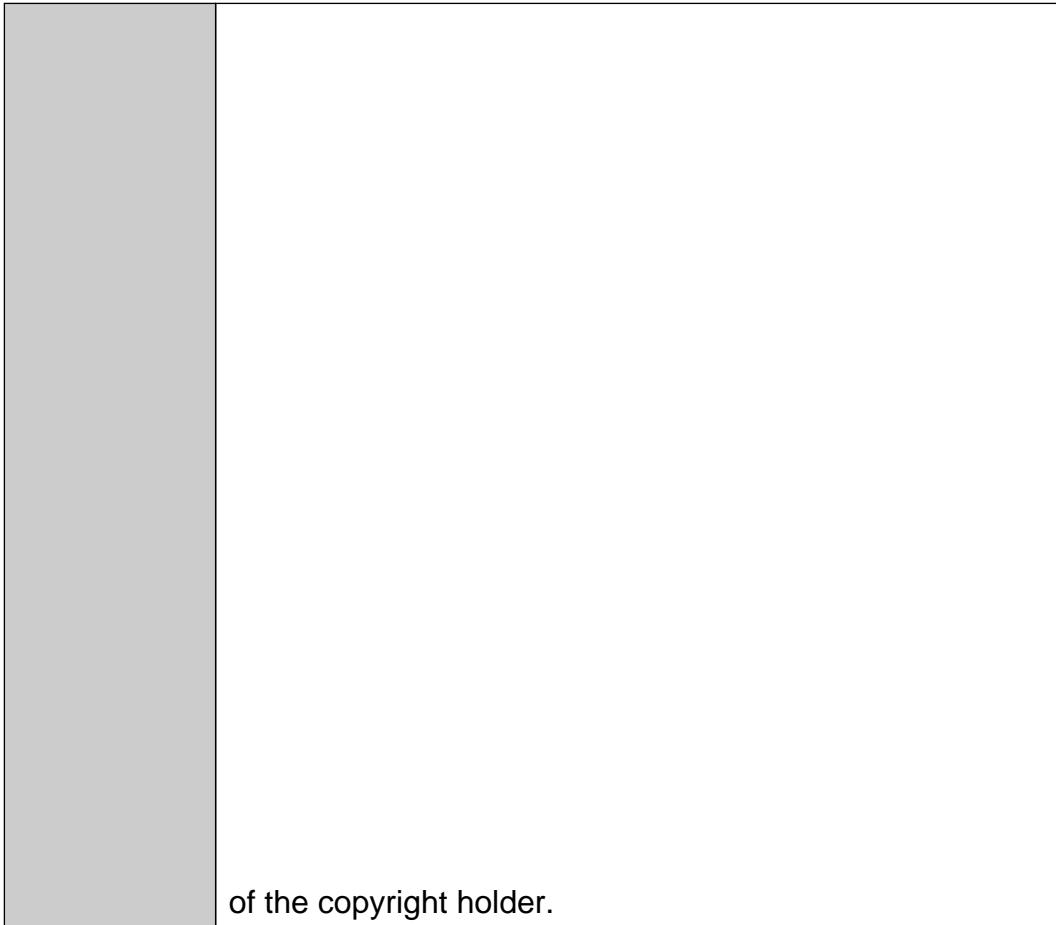
This document is downloaded from DR-NTU, Nanyang Technological University Library, Singapore.

cases, these works may not be reposted without the explicit permission

This document is downloaded from DR-NTU, Nanyang Technological University Library, Singapore.



This document is downloaded from DR-NTU, Nanyang Technological University Library, Singapore.





# A Probabilistic Memetic Framework

Quang Huy Nguyen, Yew-Soon Ong, and Meng Hiot Lim

**Abstract**—Memetic algorithms (MAs) represent one of the recent growing areas in evolutionary algorithm (EA) research. The term MAs is now widely used as a synergy of evolutionary or any population-based approach with separate individual learning or local improvement procedures for problem search. Quite often, MAs are also referred to in the literature as Baldwinian EAs, Lamarckian EAs, cultural algorithms, or genetic local searches. In the last decade, MAs have been demonstrated to converge to high-quality solutions more efficiently than their conventional counterparts on a wide range of real-world problems. Despite the success and surge in interests on MAs, many of the successful MAs reported have been crafted to suit problems in very specific domains. Given the restricted theoretical knowledge available in the field of MAs and the limited progress made on formal MA frameworks, we present a novel probabilistic memetic framework that models MAs as a process involving the decision of embracing the separate actions of evolution or individual learning and analyzing the probability of each process in locating the global optimum. Further, the framework balances evolution and individual learning by governing the learning intensity of each individual according to the theoretical upper bound derived while the search progresses. Theoretical and empirical studies on representative benchmark problems commonly used in the literature are presented to demonstrate the characteristics and efficacies of the probabilistic memetic framework. Further, comparisons to recent state-of-the-art evolutionary algorithms, memetic algorithms, and hybrid evolutionary-local search demonstrate that the proposed framework yields robust and improved search performance.

**Index Terms**—Hybrid genetic algorithm-local search (GA-LS), memetic algorithm (MA), probabilistic evolutionary algorithms.

## I. INTRODUCTION

OPTIMIZATION may be defined simply as a process for seeking better or best alternative solution from a number of possible solutions to a problem. It is part and parcel of problem solving in many areas of science and engineering, including those that are directly applicable in our daily life. Over the years, optimization methods have evolved considerably, with many algorithms and implementations now available. Typical conventional search methods are steepest descent methods, conjugate gradient, quadratic programming, and linear approximation methods. These local strategies carry out iterative search for the optimum solution within the neighborhood of a candidate solution. Starting from a single candidate solution, these methods rely on “local” information to decide on their next move in the neighborhood. As the

name suggests, all deterministic local strategies suffer from the same drawback; they are susceptible to stagnation due to convergence towards a local optima. Their main advantage is the efficiency. However, they tend to be sensitive to starting point selection and are more likely to settle at non-global optima than modern stochastic algorithms.

Modern stochastic algorithms such as evolutionary algorithms (EAs) draw inspiration from biological evolution. EA, unlike conventional numerical optimization methods, produce new design points that do not use information about the local slope of the objective function and are thus not prone to stalling at local optima. Instead, they involve a search from a “population” of solutions, making use of competitive selection, recombination, mutation or other stochastic operators to generate new solutions which are biased towards better regions of the search space. Furthermore, they have shown considerable success in dealing with optimization problems characterized by non-convex, disjoint, or noisy solution spaces. Some of the modern stochastic optimizers that have attracted a great deal of attention in recent years include simulated annealing, tabu search, genetic algorithms, evolutionary programming, evolution strategies, differential evolution, and others [1]–[5]. These stochastic methods have been successfully applied to many real-world optimization problems.

In general, EAs are capable of exploring and exploiting promising regions of the search space. They can, however, take a relatively long time to locate the exact local optimum within the region of convergence. Memetic algorithms (MAs) are recent extensions of EAs with the introduction of individual learning as a separate process of local refinement for accelerating search. Recent studies on MAs have demonstrated that they converge to high-quality solutions more efficiently than their conventional counterparts [6]–[11] on many real-world applications. In recent years, many dedicated MAs have been crafted to solve domain-specific problems more efficiently. Meanwhile, a distinct group of researchers concentrated on the algorithmic aspects of MA, as combinations of EAs with local searches [13]–[24]. In recent special issues [25], [26], and journal [53] dedicated to MA research, several new design methodologies of memetic algorithms [27], [54], [55] and specialized memetic algorithms designed for tackling the permutation flow shop scheduling [56], optimal control systems of permanent magnet synchronous motor [28], VLSI floorplanning [30], quadratic assignment problem [31], gene/feature selection [32] have been introduced. From a survey of the area, it is now well established that potential algorithmic improvement can be achieved by considering some important issues of MAs.

- 1) How often should local learning be applied, i.e., local search frequency  $f_{ll}$ ? Alternatively, what is the

Manuscript received May 5, 2008; revised August 13, 2008; accepted October 15, 2008. Current version published June 10, 2009.

Q. H. Nguyen and Y.-S. Ong are with the School of Computer Engineering, Nanyang Technological University, 639798, Singapore (e-mail: nguy0046@ntu.edu.sg; asyosong@ntu.edu.sg).

M. H. Lim is with the School of Electrical and Electronic Engineering, Nanyang Technological University, 639798, Singapore (e-mail: emhlim@ntu.edu.sg).

Digital Object Identifier 10.1109/TEVC.2008.2009460

appropriate probability  $P_{il}$  for applying local learning to an individual?

- 2) To which solution subset of the population  $\Omega_{il}$  should the local learning be applied?
- 3) How long should the local learning be run, i.e., local search intensity or local search computational time budget,  $t_{il}$ ?
- 4) Which local improvement procedure or meme is to be used?

One of the first issues pertinent to MA design is to consider how often the local search should be applied, i.e., local search frequency. In [13], the effect of local search frequency on MA search performance was considered where various configurations of the local search frequency at different stages of the MA search were investigated. Conversely, it was shown in [14] that it may be worthwhile to apply local search on every individual if the computational complexity of the local search is relatively low. On the issue of selecting appropriate individuals among the EA population that should undergo local search, fitness-based and distribution-based strategies were studied for adapting the probability of applying local search on the population of chromosomes in continuous parametric search problems, with Land [15] extending the work to combinatorial optimization problems. Recently, Bambha *et al.* [16] introduced a simulated heating technique for systematically integrating parameterized local search into EAs to achieve maximum solution quality. Goldberg and Voessner also attempted to optimize the performance of global-local search hybrid in the context of a fixed local search time that leads to solution with acceptable targets on simplistic synthetic functions [17]. Subsequently, Sinha *et al.* [18] extends the work in [16] with some in-depth study on genetic algorithm as a global searcher. The performance of MA search is also greatly affected by the choice of neighborhood structures. The effect of neighborhood structures on evolutionary search performances was first studied by Yao in the context of simulated annealing [19]. Recently, Krasnogor [20], [21] investigated how to change the size and the type of neighborhood structures dynamically in the framework of multimeme MAs where each meme biases different neighborhood structure, acceptance rule, and local search intensity. Various schemes for choosing among multiple local learning procedures or memes during the memetic algorithm search in the spirit of Lamarckian learning, otherwise known as meta-Lamarckian learning, was also addressed in [6]. For a detailed taxonomy and comparative study on adaptive choice of memes in MA, the reader is referred to [22]. Based on the terminology provided in [22], several new adaptive and self-adaptive memetic algorithms were proposed by Smith [26], Liu *et al.* [27] and Caponio *et al.* [28] and reported in the recent special issue on MA [25].

Thus far, it is clear that unless one has *a priori* knowledge as to whether the evolutionary or individual learning mechanisms suits the problem in hand, i.e., through the correct definition of the algorithmic settings, the MA may not perform at its optimum or, worse, it may perform poorer than evolution or individual learning alone. Depending on the complexity of the design problem, an algorithmic configuration that may

have proven to be successful in the past might not work at all, or as well as, others—an outcome that is directly related to the “no free lunch theorem for search” [33]. With the restricted amount of theory currently available for choosing the appropriate configuration of MA that best matches a black box problem, it is not surprising that researchers have now opted for algorithms that learn and reconfigure itself to adapt to the problem in hand while the search progresses [13]–[24].

In the context of optimization, it is worth noting that the key design issue of MA lies in the successful promotion of competition and cooperation between the forces of *evolution* and *individual learning*. This can be achieved by adapting the algorithmic parameters of MA, within some limited computational budget. Since MA are synergies of *evolution* and *individual learning*, it may be worthwhile to model MA as a process involving the decision of embracing the separate actions of *evolution* or *individual learning* at each point in time. As an example, it is worth noting that the frequency and intensity of individual learning, i.e.,  $f_{il}$  or  $t_{il}$ , are among those that directly define the degree of evolution (exploration) against individual learning (exploitation) in the MA search under some limited computational budget. Clearly, a more intense individual learning, i.e., a large  $t_{il}$  and  $f_{il}$ , provide greater chances of convergence to the local optima but limits the extent of evolution that may be expended without incurring excessive computational resources.

In this paper, we present a formal probabilistic memetic framework (PrMF) that governs at runtime whether evolution or individual learning should be favored, with the primary objective of accelerating MA search. Note that existing strategies for controlling the MA parameters are mostly designed based on heuristics that comes with little theoretical motivation and considers each design issue of MA independently. In contrast to earlier works, we derive a theoretical bound for individual learning intensity or  $t_{il}$  within the PrMF. Section II outlines the formulation of the probabilistic models used in deriving the theoretical bound. Subsequently, we propose a novel approximate probabilistic memetic framework (APrMF) that adapts by governing the learning intensity of each individual according to a theoretical upper bound *while* the search progresses. Section III describes the APrMF in details. Section IV presents the numerical study on search performance of APrMF while Section V compares the performance of APrMF with several recent state-of-the-art advanced evolutionary, memetic, and hybrid algorithms. Finally, Section VI concludes with some recommendations for further research.

## II. PROBABILISTIC MEMETIC FRAMEWORK FOR NONLINEAR OPTIMIZATION

Optimization is the study of the mathematical properties of optimization problems and the analysis of algorithms. It deals with the problem of minimizing or maximizing a mathematical model of an objective function such as cost, fuel consumption, etc., subject to a set of constraints. Here, we consider the general nonlinear programming problem of the form:

- 1) a target objective function  $f(\mathbf{x})$  to be minimized or maximized;

**Procedure: Canonical Memetic Algorithm****Begin**

/\* Evolution - Stochastic Search Operators \*/

**Initialize:** Generate an initial population;**While** (Stopping conditions are not satisfied)

Evaluate all individuals in the population.

    Select the subset of individuals,  $\Omega_{il}$ , that should undergo the individual learning procedure.    **For each** individual in  $\Omega_{il}$ 

/\* Individual Learning –Local heuristics or Conventional exact methods \*/

- Perform individual learning using meme(s) with probability of  $P_{il}$  or frequency  $f_{il}$  for a  $t_{il}$  period.
- Proceed with Lamarckian or Baldwinian learning.

**End For**

Generate a new population using stochastic search operators.

**End while****End**

Fig. 1. Outline of a memetic algorithm.

- 2) a set of real variables,  $\mathbf{x} \in \mathbb{R}^{ndim}$ ,  $\mathbf{x}_{low} \leq \mathbf{x} \leq \mathbf{x}_{up}$ , where  $\mathbf{x}_{low}$  and  $\mathbf{x}_{up}$  are the vectors of lower and upper bounds, respectively, and  $ndim$  representing problem dimensionality;
- 3) a set of equality/inequality constraints  $g_w(\mathbf{x})$  that allow the unknowns to take on certain values but exclude others. For example, the constraints may take the form of  $g_w(\mathbf{x}) \leq 0$ , for  $w = 1, 2, \dots, b$  where  $b$  is the number of constraints.

**A. Memetic Algorithm**

At a macro-level, MA can be defined as a synergy of evolution and individual learning. In the case of a minimization problem, the aim of the memetic algorithm is to locate the *global minimum*  $\mathbf{x}^*$  such that  $\mathbf{x}^* = \arg \min_{\mathbf{x}} f(\mathbf{x})$ , without violating the constraints imposed. The pseudo-code of a Canonical Memetic Algorithm is outlined in Fig. 1.

Without loss of generality, evolution usually involves some stochastic operators while individual learning is in the form of local heuristics [34] or conventional exact enumerative methods [35]–[38]. Examples of the stochastic evolutionary search include Monte Carlo algorithm, simulated annealing, genetic algorithm, swarm algorithm, and others. In practice, the objective function of a problem does not display convexity, thus several local optima in the form of minima and/or maxima may exist. In this case, a *local minimum*  $\mathbf{x}_l$  is defined as a point for which there exists some  $\delta > 0$  so that for all  $\mathbf{x}$  such that  $\|\mathbf{x} - \mathbf{x}_l\| \leq \delta$ , the expression  $f(\mathbf{x}_l) \leq f(\mathbf{x})$  holds. Examples of individual learning strategies include the hill climbing, Simplex method, Newton/Quasi-Newton method, interior point methods, conjugate gradient method, line search and other local heuristics.

In what follows, we present the theoretical formulations of probabilistic models for evolution and individual learning in MA. In particular, we model MA as a process involving

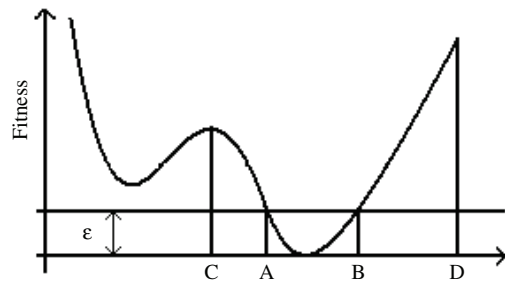


Fig. 2. Illustrations of type I and type II points.

the decision of embracing the separate actions of *evolution* or *individual learning* and analyze the probability of each process in locating the global optimum. To begin, we outline some basic definitions used in our formulations.

*Definition 1:* The optimization problem is considered solved or reached the global optimum if at least one solution  $\mathbf{x}'$  satisfies the condition

$$f(\mathbf{x}') \leq f(\mathbf{x}^*) + \varepsilon \quad (1)$$

where  $\varepsilon$  denotes a very small value.

*Definition 2:* A type I point satisfies inequality (1). As shown in Fig. 2, a point is of type I if it lies in the segment AB of the graph.

*Definition 3:* A type II point lies in a basin of attraction containing type I points. Based on Fig. 2, type II points lie in the segment CD.

*Definition 4:*  $p_1^{(k)}$  or  $p_2^{(k)}$  is the probability that an individual in the population of candidate solutions at generation  $k$  is a type I or type II point, respectively.

Note that it follows from the above definitions that all individual learning approaches, when started from a type II point always converges to a type I point within tractable

computational budget. In Fig. 2 the basins are shown as valley, but without loss of generality, the basin of attraction can be in the form of any neighborhood/modality structure.

Here, we model *evolution* and *individual learning* in MA as independent processes and analyze the probability of each process in locating type I point(s). Consider current generation  $k$ , the probability of finding at least one type I as a result of individual learning can be derived as

$$P_l = 1 - \left(1 - p_2^{(k)}\right)^{f_{il} * n}. \quad (2)$$

The total computational cost  $C_{il}$  (in terms of function evaluation counts/calls) of individual learning in each search generation can be written as

$$C_{il} = t_{il} \times (f_{il} \times n) \quad (3)$$

where  $n$  represents the MA population size,  $t_{il}$  is the computational budget allocated to a single iteration of individual learning, and  $f_{il}$  is the frequency of individual learning that defines the portion of a population that undergoes individual learning.

For the same computational budget expended, the number of search generations  $\Delta_g$  that one may replace individual learning with stochastic evolutionary search is given by

$$\Delta_g = \frac{t_{il} \times (f_{il} \times n)}{t_{gs}} \quad (4)$$

where  $t_{gs}$  is the computational cost incurred by evolution in generating the subsequent populations. For the sake of consistency, we consider  $t_{gs}$  in terms of function evaluations incurred per generation. By assuming weak dependency among the value of  $p_1^{(k)}$  across  $\Delta_g$  generations, the probability  $P_g$  of having at least one type I point is given by

$$P_g = 1 - \prod_{i=1}^{\Delta_g} \left(1 - p_1^{(k+i)}\right)^n. \quad (5)$$

### B. Theoretical Upper Bound for $t_{il}$ in MA

Here, we generalize the design of an MA as a decision of *evolution* against *individual learning* at each point in time. Clearly, individual learning should be used if it has a higher probability of reaching a type I point over stochastic evolution under equal computational budget, i.e.

$$\begin{aligned} P_l &\geq P_g \\ \Leftrightarrow 1 - \left(1 - p_2^{(k)}\right)^{f_{il} * n} &\geq 1 - \prod_{i=1}^{\Delta_g} \left(1 - p_1^{(k+i)}\right)^n \\ \Leftrightarrow \left(1 - p_2^{(k)}\right)^{f_{il} * n} &\leq \prod_{i=1}^{\Delta_g} \left(1 - p_1^{(k+i)}\right)^n. \end{aligned} \quad (6)$$

Every search algorithm, except for uniform random search, introduces some unique form of bias, which is suitable for some classes of problems but not for others. Hence it is fair to assume that the global search method chosen for solving the problem of interest is one that is deemed

as capable of directing the search towards the promising region containing Type I points as the search evolves, i.e.,

$$\prod_{i=1}^{\Delta_g} \left(1 - p_1^{(k+i)}\right)^n \leq \left(1 - p_1^{(k)}\right)^{n * \Delta_g}. \quad (7)$$

From (6) and (7) we have

$$\begin{aligned} \left(1 - p_2^{(k)}\right)^{f_{il} * n} &\leq \prod_{i=1}^{\Delta_g} \left(1 - p_1^{(k+i)}\right)^n \leq \left(1 - p_1^{(k)}\right)^{n * \Delta_g} \\ \Leftrightarrow \left(1 - p_2^{(k)}\right)^{f_{il}} &\leq \left(1 - p_1^{(k)}\right)^{\Delta_g}. \end{aligned} \quad (8)$$

Taking logarithms of both sides, we arrive at

$$\begin{aligned} f_{il} \ln \left(1 - p_2^{(k)}\right) &\leq \Delta_g \ln \left(1 - p_1^{(k)}\right) \\ \Leftrightarrow f_{il} \ln \left(1 - p_2^{(k)}\right) &\leq \frac{t_{il} f_{il} n}{t_{gs}} \ln \left(1 - p_1^{(k)}\right) \\ \Leftrightarrow \ln \left(1 - p_2^{(k)}\right) &\leq \frac{t_{il} n}{t_{gs}} \ln \left(1 - p_1^{(k)}\right). \end{aligned} \quad (9)$$

Since  $\ln(1 - p_1) < 0$ , the above expression becomes

$$t_{il} \leq \frac{t_{gs}}{n} \frac{\ln \left(1 - p_2^{(k)}\right)}{\ln \left(1 - p_1^{(k)}\right)}$$

Or

$$t_{il}^{\text{upper}} = \frac{t_{gs}}{n} \frac{\ln \left(1 - p_2^{(k)}\right)}{\ln \left(1 - p_1^{(k)}\right)}. \quad (10)$$

Equation (10) thus provides a theoretical upper bound on the computational cost allowable for performing individual learning in MA. This implies that one should not allocate a computational budget greater than  $(t_{gs}/n) \times (\ln(1 - p_2^{(k)})/\ln(1 - p_1^{(k)}))$  for conducting individual learning at generation  $k$ . Indirectly, it also implies that if a meme or learning procedure requires a computational budget of more than  $t_{il}^{\text{upper}}$  to reach a type I point, then it should not be used since it does not offer any competitive advantage over the process of evolution in the MA search. It is also worth noting that (10) is independent of  $f_{il}$  indicating that the frequency of learning in MA does not affect the theoretical bound for  $t_{il}$ .

### III. PROBABILISTIC MEMETIC FRAMEWORK

In this section, we formulate a PrMF as a basis for adaptation. This is achieved by governing the maximum intensity of the individual learning using the theoretical bound derived in Section II, *while* the search progresses. Based on the taxonomy in [22], PrMF represents an Online adaptive approach. The pseudo code for PrMF is outlined in Fig. 3. In the first step, the PrMF population is initialized either randomly or using design of experiments techniques such as Latin hypercube sampling [39]. The evaluated populations of chromosomes then undergo evolution based on the stochastic operators. For instance, in a genetic-based MA, the stochastic operators include mutation, crossover, and selection.

**Procedure:** PrMF

**Begin**

*/\* Evolution - Stochastic Search Operators \*/*

**Initialize:** Generate an initial population;

**While** (Stopping conditions are not satisfied)

Evaluate all individuals in the population.

**For each** individual in new population

*/\* Individual learning with  $t_{il}$  defined by the estimated theoretical upper bound \*/*

- Estimate the theoretical individual learning intensity bound,  $t_{il}^{\text{upper}} = [(t_{gs})/(n)][(\ln(1 - p_2^{(k)}))/(\ln(1 - p_1^{(k)}))]$
- Perform individual learning using the specified meme for  $t_{il}^{\text{upper}}$  evaluations
- Proceed with Lamarckian or Baldwinian learning

**End For**

Generate a new population using stochastic search operators.

**End while**

**End**

Fig. 3. Outline of probabilistic memetic framework.

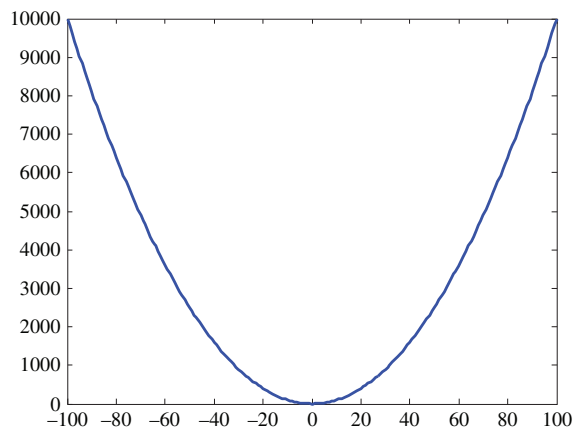


Fig. 4. Unimodal sphere function.

Subsequently, in contrast to the canonical MA, the theoretical upper bound for learning intensity  $t_{il}^{\text{upper}}$  is estimated for each individual/chromosome in the newly evolved population, based on  $p_1^{(k)}$ ,  $p_2^{(k)}$ , and  $t_{gs}/n$  in (10). Each chromosome then undergoes individual learning using the specified meme according to their respective maximum allowable intensity. In the next section, we analyze the efficacy of the proposed PrMF using two synthetic benchmark functions with known fitness landscape.

#### A. Unimodal Sphere Function

We first consider the Sphere function with a one-dimensional landscape depicted in Fig. 4. For unimodal Sphere function, all decision vectors in the entire solution space including the global optimum lie in the single basin of attraction for a first- or second-order derivative based local search optimization method. Hence, the probabilities of hitting type I ( $p_1^{(k)}$ ) or type II ( $p_2^{(k)}$ ) points at generation  $k$  can be easily estimated as  $p_1^{(k)} < 1$  and  $p_2^{(k)} = 1$ , respectively. Note

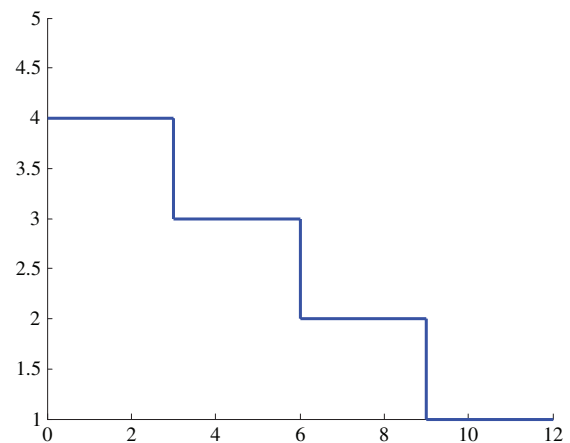


Fig. 5. Multimodal step function.

that  $p_1^{(k)}$  approaches zero for increasing dimensionality of the Sphere function. With  $p_1^{(k)} \sim 0$  and  $p_2^{(k)} = 1$  in (10), the theoretical upper bound of  $t_{il}$  approaches infinity. This implies that all individual learning involving first- or second-order derivative based methods would search more efficiently than random sampling or stochastic search methods in reaching the global optimum. From (2), it can also be derived that the probability  $P_l$  of finding at least one type I point or the global optimum of the Sphere function in the case of a unimodal problem when using individual learning is 1, since  $P_l = 1 - (1 - p_2^{(k)})^{f_{il} * n} = 1$ , as  $p_2^{(k)} = 1$ . Statistically, it makes better sense to use a first or second-order derivative based method over stochastic evolutionary operators to search on the unimodal Sphere function.

#### B. Multimodal Step Function

Next we consider the multimodal Step function where the one-dimensional landscape is depicted in Fig. 5. Consider

---

**Procedure:** APrMF

**Begin**

*/\* Start of Canonical MA \*/*

**Initialize:** Generate an initial population;

**For** the first few generations

    Evaluate all individuals in the population.

**For each** individual  $\mathbf{x}(i)$  in current population

        • Perform individual learning using the specified *meme with tracking capabilities* for a maximum of  $t_{il}(i) = t_{il}^{\text{initial}}$  evaluations

        • Proceed with Lamarckian or Baldwinian learning

**End For**

    Generate a new population using stochastic search operators.

**End For**

---

*/\* End of Canonical MA \*/*

**While** (Stopping conditions are not satisfied)

    Evaluate all individuals in the population

**For each** individual  $\mathbf{x}(i)$  in new population

---

*/\* Individual learning with adaptive  $t_{il}$  set according to upper bound and the expected value \*/*

    • Estimate learning intensity upper bound  $t_{il}^{\text{upper}}(i)$  and expected learning intensity  $t_{il}^{\text{expected}}(i)$  for individual  $\mathbf{x}(i)$  using the *Individual Learning Intensity Estimation Scheme* outlined in Fig. 7.

    • **If** ( $t_{il}^{\text{expected}}(i) \leq t_{il}^{\text{upper}}(i)$ ) **then**

*/\* increase budget for individual learning \*/*

    •  $t_{il}(i) = f(t_{il}^{\text{expected}}(i))$

    • Perform individual learning using the specified meme for  $t_{il}(i)$  evaluations

    • Proceed with Lamarckian or Baldwinian learning

**Else**

*/\* Do not perform any individual learning \*/*

**End If**

---

**End For**

    Generate a new population using stochastic search operators.

**End while**

**End**

---

Fig. 6. Outline of the approximate probabilistic memetic framework.

again a first- or second-order derivative based local search optimization method as the individual learning procedure versus the stochastic evolutionary operators in the PrMF. From the landscape in Fig. 5, it can be easily observed that the set of type II points, for instance in the range [9, ref:12], is exactly the same as the set of type I points. As a result, for a specific search method considered, the probability of hitting type I ( $p_1^{(k)}$ ) or type II ( $p_2^{(k)}$ ) is equal, i.e.,  $p_1^{(k)} = p_2^{(k)}$ , for all  $k$ . With  $p_1^{(k)} = p_2^{(k)}$ , the theoretical upper bound  $t_{il}^{\text{upper}}$  becomes  $t_{gs}/n$  according to (10), i.e.,  $t_{il}^{\text{upper}} = t_{gs}/n \times \ln(1 - p_2^{(k)})/\ln(1 - p_1^{(k)}) = t_{gs}/n$ . Further, the condition  $t_{gs} \leq n$  holds since the entire or a portion of the population is generally replaced and evaluated in each search generation. With  $t_{gs} \leq n$  and  $t_{il}^{\text{upper}}$  becomes  $\leq 1$

indicating that derivative-based individual learning should not be performed on this multimodal Step problem. Note that first- or second-order derivative based methods do not generate improvements on a stationary point and since all points in the search space and basin of attraction are stationary, i.e., (gradient is equal to 0), any amount of computational budget allocated to a derivative-based individual learning is unlikely to contribute to the success of PrMF in search for the global optimum.

### C. APrMF

In the previous section, we have assumed that information on  $p_1^{(k)}$  and  $p_2^{(k)}$  for the problem in hand can be easily obtained or estimated. In reality, one usually has little or no prior

---

**Procedure: Individual Learning Intensity Estimation Scheme**
**Begin**

/\* Estimate  $p_1$  and  $p_2$  \*/

1. Identify set  $\Omega$ , the  $q$  nearest chromosomes of  $\mathbf{x}$  in database  $\Phi$ .
2. Identify set  $\Omega_{trace}$ , the  $q$  learning search traces associated with the  $q$  nearest chromosomes.
3. Find  $\mathbf{x}_{best}$ , the fittest individual in  $\Omega_{trace}$ , i.e.,  $\mathbf{x}_{best} = \arg \min_{\mathbf{x}} \{f(\mathbf{x}) | \mathbf{x} \in \Omega_{trace}\}$ .
4. Find  $\mathbf{x}_1$ , the furthest  $\varepsilon$ -close point to  $\mathbf{x}_{best}$ , i.e.,  $\mathbf{x}_1 = \arg \max_{\mathbf{x}} \{\|\mathbf{x} - \mathbf{x}_{best}\| | f(\mathbf{x}) \leq f(\mathbf{x}_{best}) + \varepsilon\}$
5. Estimate the upper bound for learning intensity,

$$t_{ls}^{upper} = \frac{t_{gs}}{n} \frac{\ln(1 - p_2^{(k)})}{\ln(1 - p_1^{(k)})} = \frac{t_{gs}}{n} \frac{\|\mathbf{x} - \mathbf{x}_{best}\|^{ndim}}{\|\mathbf{x}_1 - \mathbf{x}_{best}\|^{ndim}}.$$

6. Estimate the expected value for learning intensity,

$$t_{il}^{expected} = \text{average length of the search traces in } \Omega_{trace}.$$

**End**


---

Fig. 7. Outline of individual learning intensity estimation scheme.

knowledge of  $p_1^{(k)}$  and  $p_2^{(k)}$  in complex optimization problems. In this regard, we propose a novel APrMF that incorporates an *individual learning intensity estimation scheme* for approximating  $p_1^{(k)}$ ,  $p_2^{(k)}$ , and the theoretical upper bound of the problem in hand. In doing so, APrMF adapts/governs the individual learning intensity of each individual using the *approximated* theoretical upper bound as the search progresses.

To begin, Fig. 6 presents an outline of the APrMF. In the first step, the APrMF population is initialized either randomly or using design of experiments techniques such as Latin hypercube sampling. During this initial stage, the APrMF search operates similarly to the canonical MA with all chromosomes assigned equal computational budget for conducting individual learning. Nevertheless, in contrast to a canonical MA, the individual learning procedure or meme in APrMF is equipped with search tracking capability such that the search history and structure of each chromosome is archived in database  $\Phi$ . The archived search history is then used for estimating the theoretical upper bound of future individual learning intensity.

After some predefined number of generations has elapsed, the adaptive mechanism for *individual learning intensity*, i.e.,  $t_{il}$ , takes effect. For each chromosome/individual, denoted here as  $\mathbf{x}(i)$ , that undergoes individual learning, the upper learning intensity bound  $t_{il}^{upper}(i)$  and expected learning intensity  $t_{il}^{expected}(i)$  are estimated based on the *individual learning intensity estimation scheme* outlined in Fig. 7. Here, we describe the *individual learning intensity estimation scheme* as six main steps with the aid of the simple illustration in Fig. 8.

- 1) Step 1: Locate the  $q$  nearest neighbors of individual  $\mathbf{x}(i)$  from database  $\Phi$  based on some appropriate distance metric. For example, a simple Euclidean distance metric may be used in the case of a continuous parametric

optimization problem, i.e., the two nearest neighboring points of individual  $\mathbf{x}$  in Fig. 8(a), are denoted by  $\mathbf{x}_{neighbor1}$  and  $\mathbf{x}_{neighbor2}$ .

- 2) Step 2: Identify the set  $\Omega_{trace}$  of  $q$  learning search traces associated with the nearest  $q$  chromosomes. In Fig. 8, the search traces for  $\mathbf{x}_{neighbor1}$  and  $\mathbf{x}_{neighbor2}$  are  $t_1$  and  $t_2$ , respectively.
- 3) Step 3: Determine the fittest point,  $\mathbf{x}_{best}$ , in  $\Omega_{trace}$ , i.e.,  $\mathbf{x}_{best} = \arg \min_{\mathbf{x}} \{f(\mathbf{x}) | \mathbf{x} \in \Omega_{trace}\}$ .  $\mathbf{x}_{best}$  represents the best quality  $\mathbf{x}$  solution found so far within the local vicinity or neighborhood of  $\mathbf{x}(i)$ .  $\mathbf{x}_{best}$  is denoted by point A in Fig. 8.
- 4) Step 4: Determine the range of type I point which is estimated based on the furthest  $\varepsilon$ -close point in  $\Omega_{trace}$  to  $\mathbf{x}_{best}$ , denoted here as  $\mathbf{x}_1$ , i.e.,  $\mathbf{x}_1 = \arg \max_{\mathbf{x}} \{\|\mathbf{x} - \mathbf{x}_{best}\| | f(\mathbf{x}) \leq f(\mathbf{x}_{best}) + \varepsilon\}$ . In Fig. 8,  $\mathbf{x}_1$  is defined as point B.
- 5) Step 5: The values of probabilities  $p_1^{(k)}$  and  $p_2^{(k)}$  for the neighborhood region of  $\mathbf{x}(i)$  are approximated by

$$p_2^{(k)} = \frac{\|\mathbf{x} - \mathbf{x}_{best}\|^{ndim}}{\text{volume of search space}}$$

$$p_1^{(k)} = \frac{\|\mathbf{x}_1 - \mathbf{x}_{best}\|^{ndim}}{\text{volume of search space}}.$$

The upper learning intensity bound  $t_{ls}^{upper}$  of the current individual is then estimated by

$$t_{il}^{upper} = \frac{t_{gs}}{n} \frac{\ln(1 - p_2^{(k)})}{\ln(1 - p_1^{(k)})}$$

$$= \frac{t_{gs}}{n} \frac{\ln(1 - \frac{\|\mathbf{x} - \mathbf{x}_{best}\|^{ndim}}{\text{volume of search space}})}{\ln(1 - \frac{\|\mathbf{x}_1 - \mathbf{x}_{best}\|^{ndim}}{\text{volume of search space}})}.$$

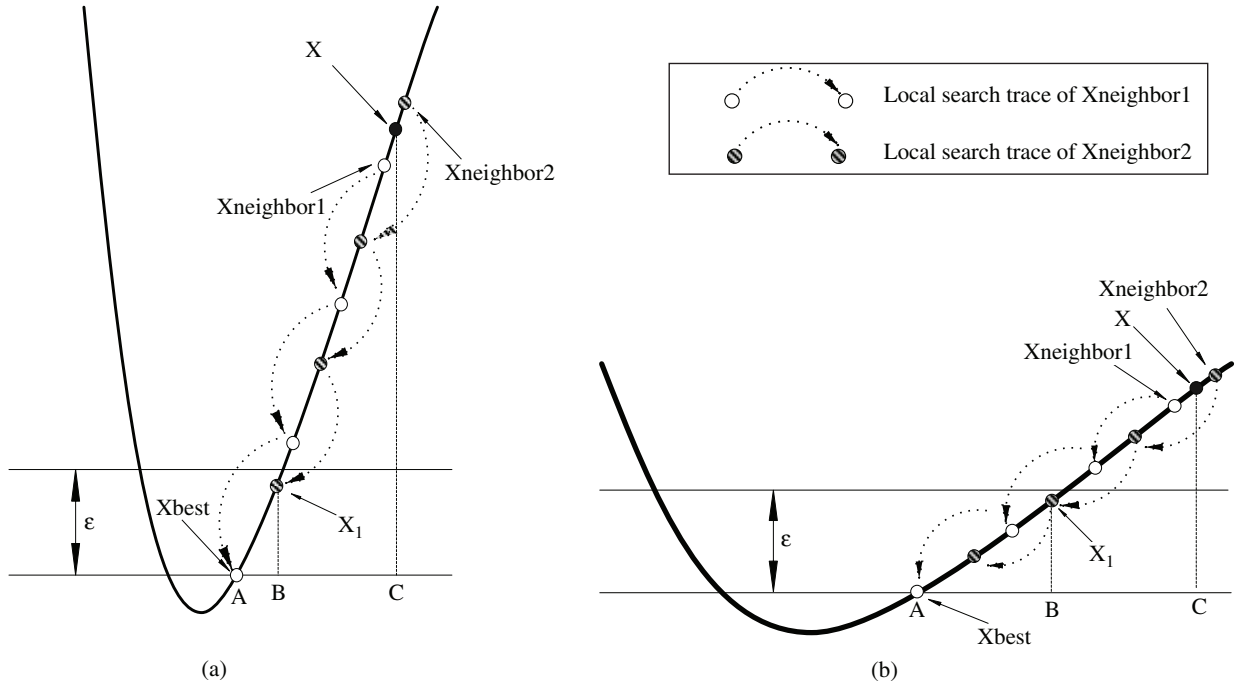


Fig. 8. Illustration of algorithm. (a) Case 1: narrow, deep basin. (b) Case 2: wide, shallow basin.

Based on Taylor series expansion,  $\ln(1 - \alpha^n) \approx -\alpha^n$  for small value of  $\alpha$ , the above equation simplifies to

$$t_{il}^{\text{upper}} = \frac{t_{gs} \|\mathbf{x} - \mathbf{x}_{\text{best}}\|^{ndim}}{n \|\mathbf{x}_1 - \mathbf{x}_{\text{best}}\|^{ndim}}.$$

For the illustration example in Fig. 8

$$t_{il}^{\text{upper}} = \frac{CA}{BA} = 5 \text{ for the case I in Fig. 8(a) while}$$

$$t_{il}^{\text{upper}} = \frac{CA}{BA} = 2 \text{ for the case II in Fig. 8(b).}$$

- 6) Step 6: Estimate the expected learning intensity  $t_{il}^{\text{expected}}$  as an average of the intensity for the  $k$  nearest neighbors. In Fig. 8, the expected intensity for individual  $\mathbf{x}$  is three since its neighbors, defined by  $\mathbf{x}_{\text{neighbor1}}$  and  $\mathbf{x}_{\text{neighbor2}}$  took three function evaluations on average in their individual learning processes.

For individual  $\mathbf{x}(i)$ , APrMF then proceeds with individual learning for a maximum computational budget defined by the estimated  $t_{il}^{\text{upper}}(i)$  and  $t_{il}^{\text{expected}}(i)$ , if the current expected learning intensity of the current neighborhood does not exceed the estimated learning intensity upper bound, i.e.,  $t_{il}^{\text{expected}}(i) \leq t_{il}^{\text{upper}}(i)$ . This is followed by a replacement of the genotype and fitness of  $\mathbf{x}(i)$  in the population or only the latter action with the improved solution in the spirit of Lamarckian or Baldwinian learning, respectively. Otherwise, no form of individual learning would be carried out should  $t_{il}^{\text{expected}} > t_{il}^{\text{upper}}$  happens. The stochastic GA operators are then used to create the next population. The entire process repeats until the specified stopping criteria are satisfied.

#### IV. EMPIRICAL STUDY

In this section, we present a numerical study to analyze the search behavior and performance of the APrMF.

Several commonly used continuous parametric benchmark test problems already extensively discussed in the literature are used here to demonstrate the efficacy of the proposed probabilistic framework. They represent classes of unimodal/multimodal, discrete/continuous, epistatic/non-epistatic test functions. Table I tabulates these benchmark test functions with their notable characteristics.

To see how the proposed APrMF improves the efficiency of a search, we consider diverse candidates of MA formed by the synergy of different stochastic and individual learning strategies on the representative benchmark problems. In particular, we consider the 1) canonical genetic algorithm (GA) [3], or 2) differential evolution (DE) [40], or 3) evolutionary strategy (ES) [41] as candidate stochastic search strategies here. For individual learning or meme, we consider the 1) strategy of Davies, Swann, and Campey with Gram-Schmidt orthogonalization (DSCG) [35], 2) Davidon, Fletcher and Powell Strategy (DFP) [37], and 3) Simplex strategy of Nelder and Mead [36]. These are representative of second, first, and zeroth order exact local search methods commonly found in the literature.

To gain a better understanding of APrMF, we analyzed and compared with the canonical MA having different fixed individual learning intensity according to the following aspects:

- 1) search quality and efficiency—the capability of the strategy to provide high search quality and efficiency over different problem types;
- 2) computational cost—the amount of extra CPU effort incurred over and above canonical memetic algorithm;
- 3) robustness—the capability of the framework/algorithm to generate performances that is reliable over different problems;



TABLE I  
MULTIMODAL BENCHMARK FUNCTIONS USED IN THE STUDY (D IS THE NUMBER OF DIMENSIONS)

Benchmark test functions	Range of xi	Characteristics			Global optimum
		Epi*	Mul*	Disc*	
$F_{Sphere} = \sum_{i=1}^D x_i^2$	$[-100, 100]^D$	None	None	None	0.0
$F_{Step} = 6D + \sum_{i=1}^D [x_i]$	$[-5.12, 5.12]^D$	None	None	Medium	0.0
$F_{Griewank} = \sum_{i=1}^D \frac{x_i^2}{4000} - \prod_{i=1}^D \cos(\frac{x_i}{\sqrt{i}}) + 1$	$[-6, 6]^D$	Weak	High	None	0.0
$F_{Ackley} = -20 \exp(-0.2 \sqrt{\frac{1}{D} \sum_{i=1}^D x_i^2}) - \exp(\frac{1}{D} \sum_{i=1}^D \cos(2\pi x_i)) + 20$	$[-32, 32]^D$	None	Weak	None	0.0
$F_{Rastrigin} = \sum_{i=1}^D (x_i^2 - 10 \cos(2\pi x_i) + 10)$	$[-5, 5]^D$	None	High	None	0.0

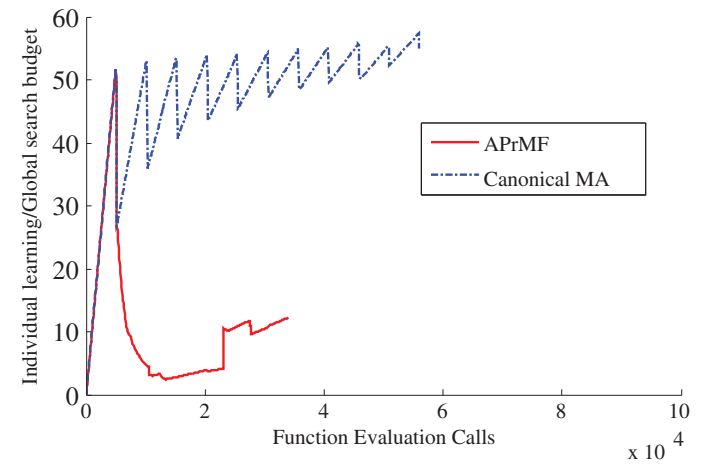
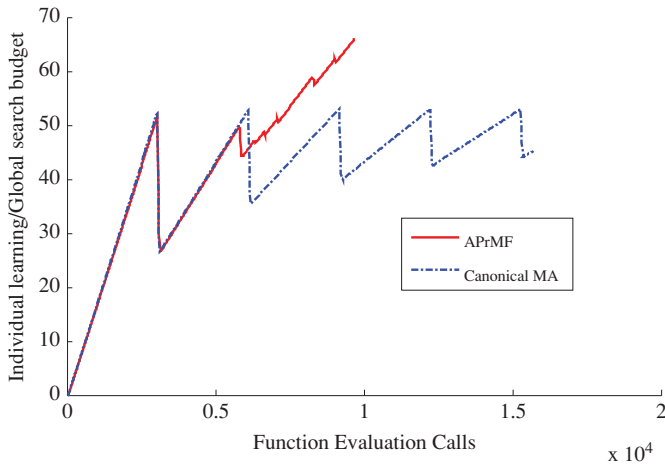
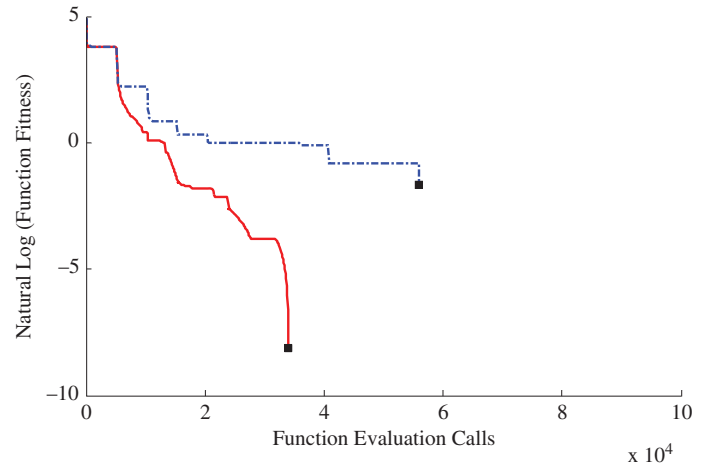
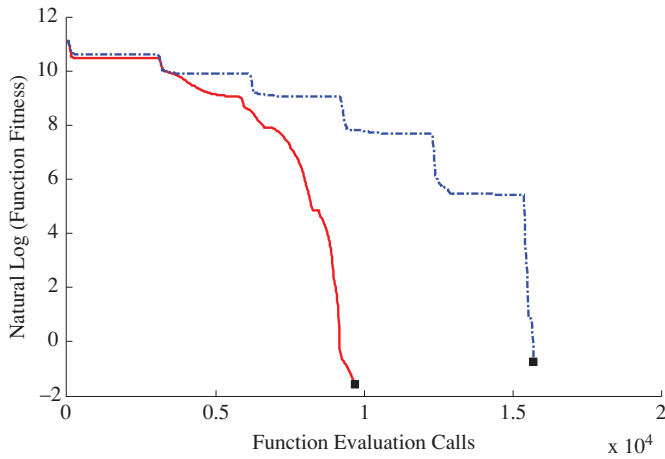


Fig. 9. Search trends of canonical MA (with a fixed individual learning intensity,  $t_{il} = 100$ ) and APrMF (GA-DFP) on the unimodal Sphere function.

Fig. 10. Search trends of canonical MA (with a fixed individual learning intensity,  $t_{il} = 100$ ) and APrMF (GA-DFP) on the Step function.

- 4) simplicity and ease of implementation—simple framework/algorithm requiring minimum effort to develop, as well as a minimum numbers of control parameters that need to be managed.

#### A. Search Quality and Efficiency

The average convergence trends obtained by APrMF based on GA and DFP individual learning procedure (GA-DFP) for solving the 30-dimension Sphere and Step problems are depicted in Figs. 9 and 10 as a function of the total number

of fitness evaluation calls. All results presented are averages over 25 independent runs. Each run continues until the global optimum was found or a maximum of 100 000 function evaluations was reached. In each run, the control parameters of the GA used in APrMF for solving the benchmark problems were set as follows: population size of 50, Gaussian mutation rate of 0.03, two-point crossover with a rate of 0.7, and real number encoding. The initial individual learning intensity used in APrMF is initialized to 100 evaluations. In Figs. 9 and 10, canonical MA implies that throughout the entire search, a fixed individual learning intensity of 100 is used, i.e., no form of adaptation for  $t_{ls}$  is made. From the results reported in the figures, APrMF is shown to converge to the global optimum of both the Sphere and Step functions more efficiently than the canonical MA.

Besides the best fitness convergence trends obtained along the APrMF search, Fig. 9(bottom) also depicts the respective individual learning/global search ratio against fitness evaluation calls. Note that the individual learning/global search ratio reflects the degree of local against the global efforts expended in the search so far. It is worth noting that during the initial stage of the plots in Figs. 9 and 10 on learning/global search ratio against function evaluation call, both the APrMF and canonical MA exhibit similar trends or traces since the former operates exactly like the canonical MA during this initial learning phase of two search generations before its adaptive strategy begins to bite. From Fig. 9(bottom), it is observed that in contrast to the canonical MA (with a fixed individual learning intensity of 100) which reaches a stable state of individual learning/global search ratio, the individual learning/global search ratio of the APrMF increases significantly as the search progresses on the Sphere function. This implies that the expected individual learning intensity of the entire population increases adaptively once the knowledge about individual learning actually leads to greater benefits than the stochastic evolutionary method is gained. In contrast, the plot in Fig. 10(bottom) illustrates a case where the individual learning/global search ratio of the population drops since the converse is true in the case of a Step function, i.e., the use of the stochastic GA operators leads to greater benefits than individual learning. In both figures, APrMF is shown to converge to the global optimum more efficiently than canonical MAs. Note that these results obtained by APrMF based on GA and DFP is consistent with our theoretical analysis presented earlier in Section III-C. Hence, this shows that the proposed individual learning intensity estimation scheme in APrMF is capable of generating good approximation of  $p_1$ ,  $p_2$  and  $t_{ls}^{upper}$  at search runtime.

Next, we further analyze the search behavior of the APrMF for different evolutionary and individual learning procedures or memes on more benchmark problems that include the 30-dimensional Ackley, Griewank, and Rastrigin functions. In particular, the following configurations of APrMFs and canonical MAs are investigated:

- 1) APrMF with the *initial* individual learning intensity configured to 100 (APrMF1);
- 2) APrMF with the *initial* individual learning intensity configured to 200 (APrMF2);

TABLE II  
PARAMETER SETTING OF APRMF

<b>General parameters</b>	
Global search	GA, DE and ES
Local search	DSCG, DFP and Simplex
Stopping criteria	100000 evaluations or convergence to global optimum
Population size	50
<b>Genetic algorithm parameters</b>	
Encoding scheme	Real-coded
Selection scheme	Roulette wheel
Crossover operator	Two point crossover $p_c = 0.7$
Mutation operator	Gaussian mutation, $p_m = 0.03$
<b>Differential evolution parameters</b>	
Crossover probability	$p_c = 0.9$
<b>ES parameters</b>	
Selection method	$\mu + \lambda, \mu = 50, \lambda = 100$
Mutation operator	Gaussian mutation
<b>Local search parameters</b>	
Initial local search intensity $t_{il}^{initial}$	100 or 200 evaluations

- 3) canonical MA with *fixed* individual learning intensity of 100 (MA1);
- 4) canonical MA with *fixed* individual learning intensity of 200 (MA2).

All parameters of the GA are kept consistent as before. Table II summarizes the parameter settings of the other search procedures used in the present experimental study.

The averaged convergence trends of various MAs obtained for the 30-dimensional benchmark problems as a function of the total number of function evaluations are summarized in Figs. 11–13. For the sake of brevity in our discussion, the numerical results obtained are grouped accordingly in Figs. 11–13, so as to highlight the different adaptive trends of the individual learning/global search ratio and individual learning intensity in the APrM framework.

Note that all the subplots in Fig. 11 share similar upward trends in the individual learning/global search ratio as the search progresses for different level of synergy between evolution and individual learning procedures on the benchmark problems. With the APrM framework, knowledge on the greater benefits of using individual learning against stochastic evolutionary search for the problems in hand is gained. Hence over time, the expected individual learning intensity or individual learning/global search ratio increases adaptively as the search progresses.

On the other hand, Fig. 12 displays upward trends in the individual learning/global search ratio on APrMF1 while experiencing a downward trend on APrMF2. Since APrMF1 and APrMF2 differ in the configurations of initial individual learning intensity at 100 and 200, respectively, such trends serve to indicate that the optimum configuration of individual learning intensity should lie somewhere between the region from 100 to 200. Note that in Fig. 12(b) and (d), the individual learning/global search ratios of APrMF1 and APrMF2

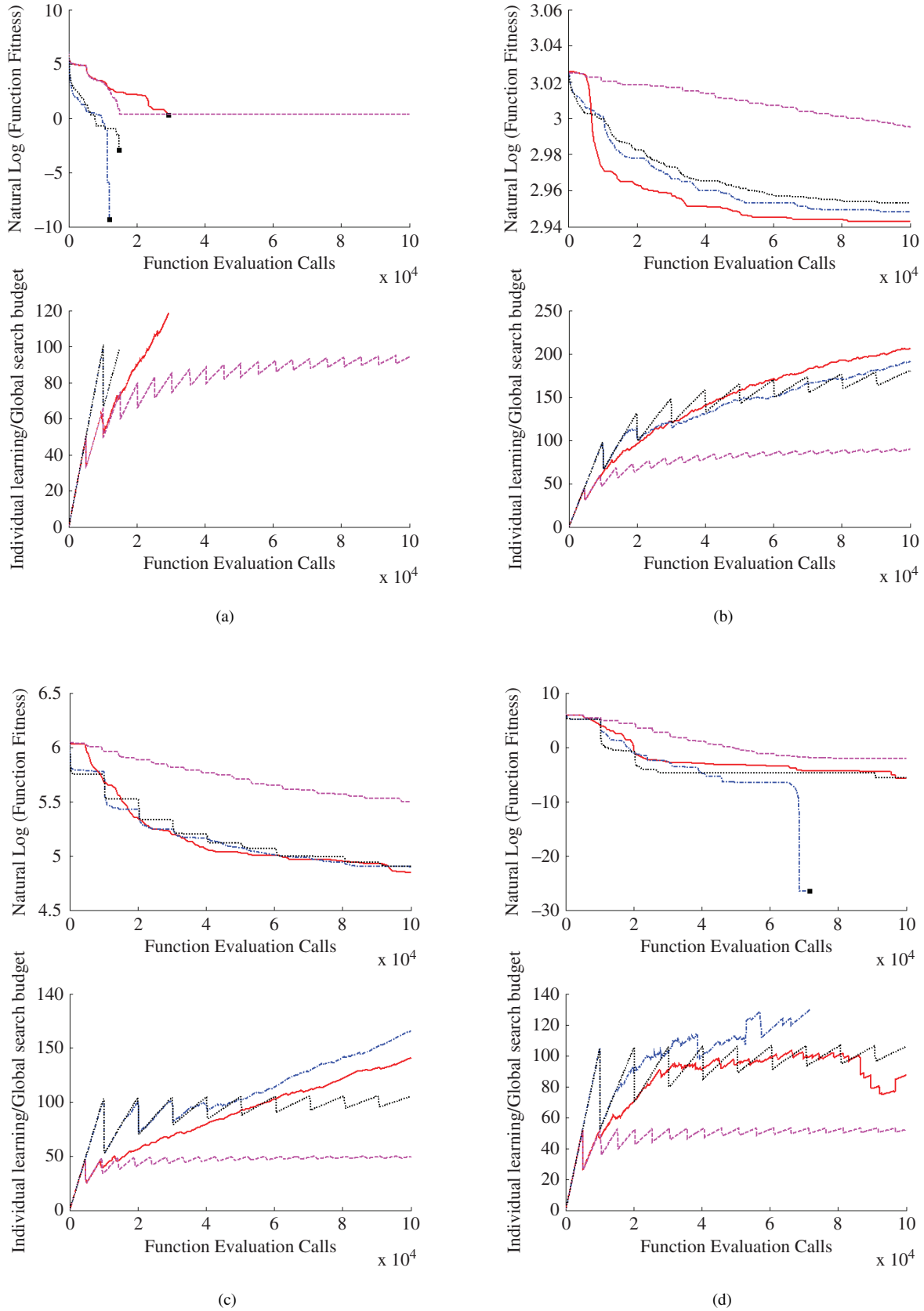
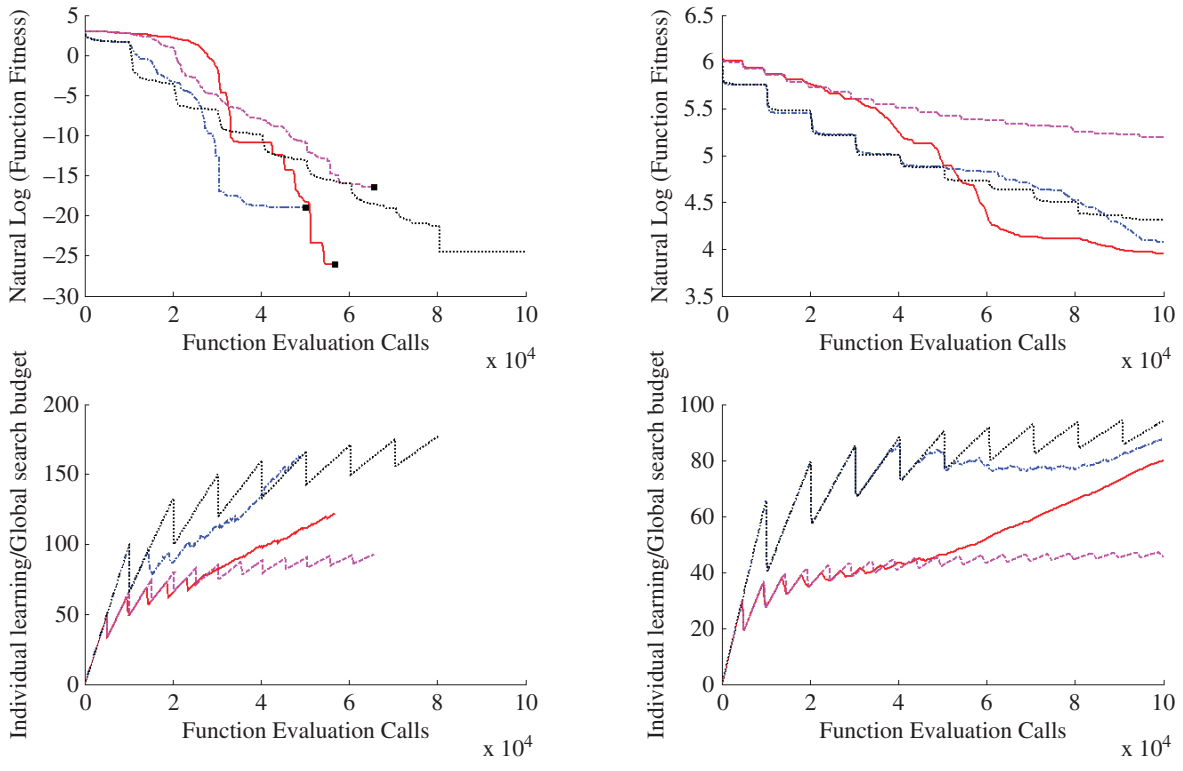
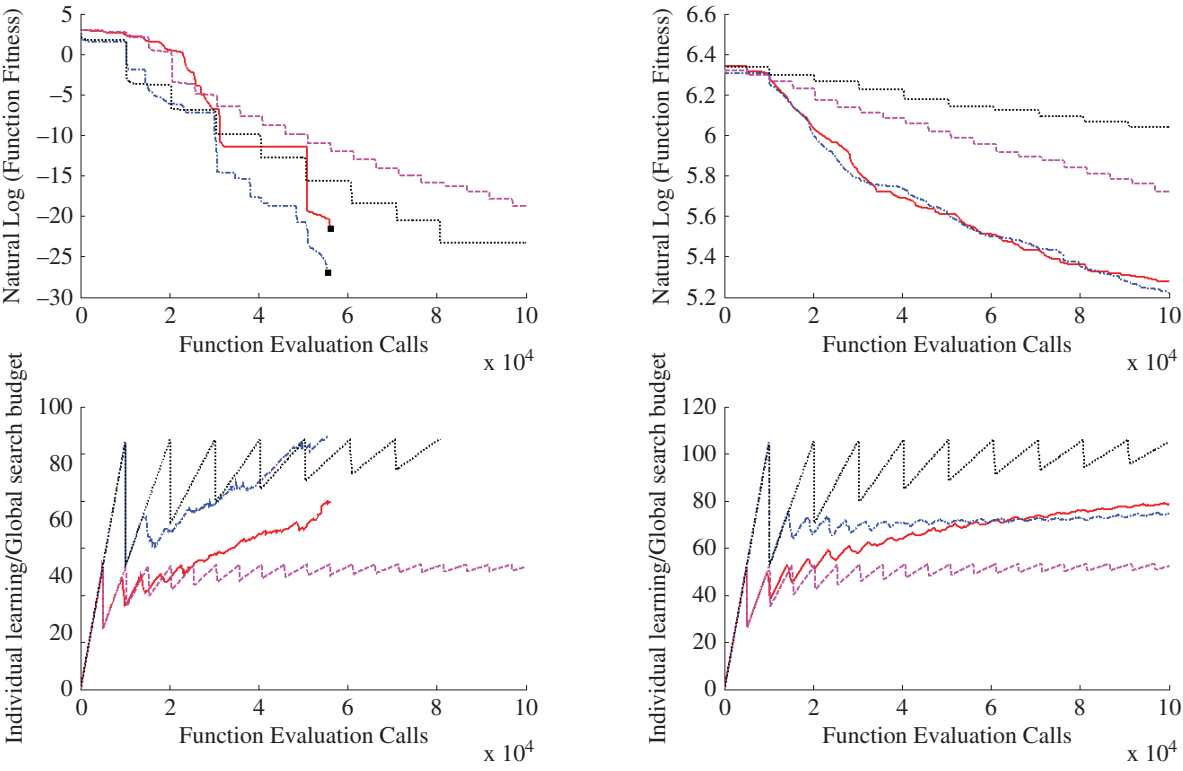


Fig. 11. APrMF with upward trends in individual learning/global search ratio and  $t_{ll}$  [for legends, refer to Fig. 13(d)]. (a) Rastrigin DE-DSCG. (b) Ackley DE-Simp. (c) Rastrigin DE-DSCG. (d) Griewank GA-GSCG.



(a) (b)



(c) (d)

Fig. 12. APrMF Adapting the individual learning/global search ratio to its optimal configuration  $i_{il}$  [for legends, refer to Fig. 13(d)]. (a) Ackley De-DSCG. (b) Rastrigin ES-Simp. (c) Ackley GA-DSCG. (d) Griewank GA-Simp.

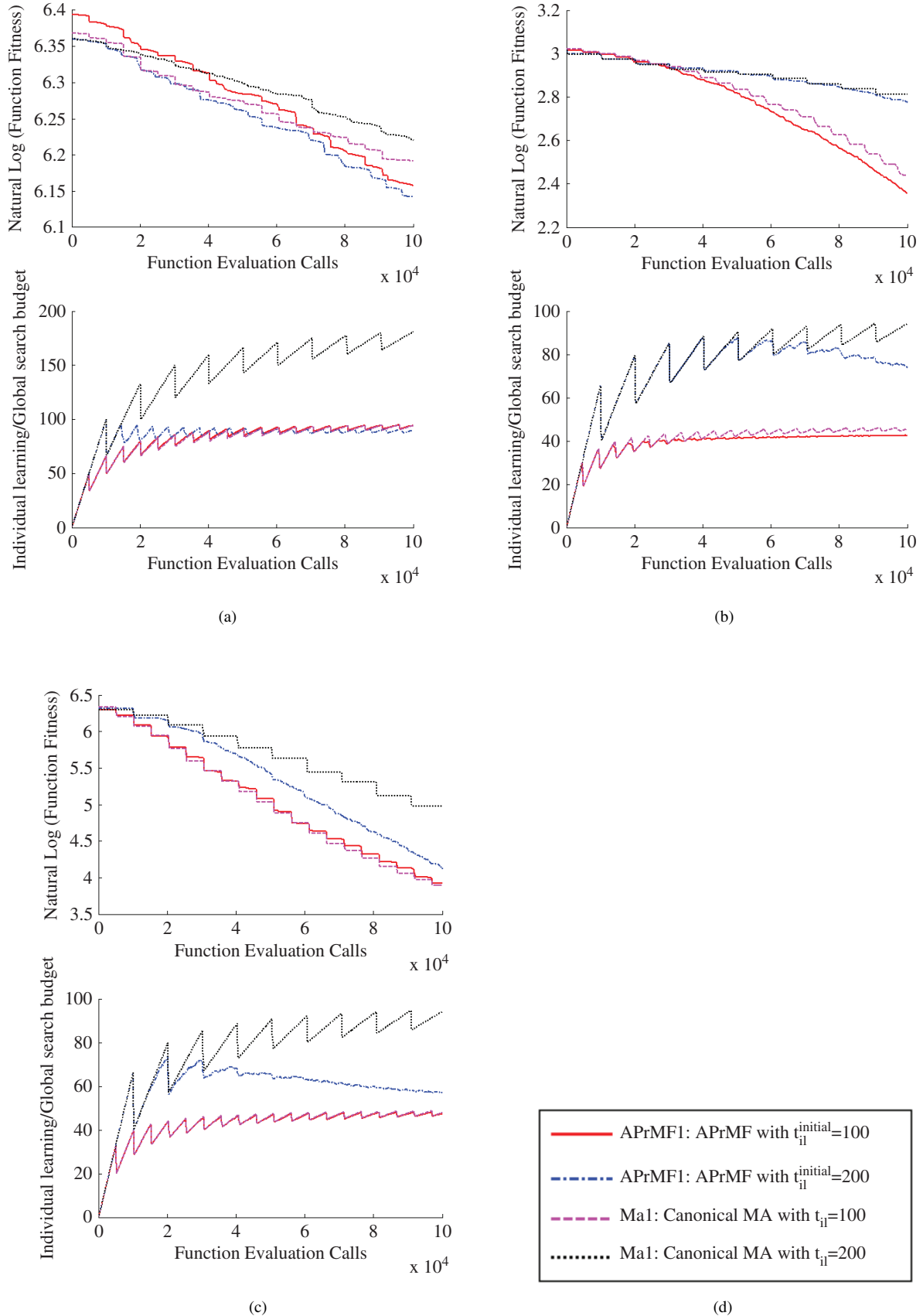


Fig. 13. APPrMF with downward trends in individual learning/global search ratio and  $t_{il}$ . (a) Griewank DE-Simp. (b) Ackley ES-Simp. (c) Griewank ES-Simp. (d) Legend for Figs. 11–13.

TABLE III  
BENCHMARK FUNCTIONS FOR REAL NUMBER OPTIMIZATION

Func	Benchmark test functions	Range	Characteristics		
			Epi*	Mul*	Disc*
1	$F_{Sphere} = \sum_{i=1}^D z_i^2$	$[-100, 100]^D$	None	None	None
2	$F_{Schwefel1.2} = \sum_{i=1}^D \left( \sum_{j=1}^i z_j \right)^2$	$[-100, 100]^D$	High	None	None
3	$F_{Elliptic} = \sum_{i=1}^D (10^6)^{\frac{i-1}{D-1}} z_i^2$	$[-100, 100]^D$	None	None	None
4	$F_{Schwefel1.2+Noise} = \left( \sum_{i=1}^D \left( \sum_{j=1}^i z_j \right)^2 \right) * (1 + 0.4  N(0, 1) )$	$[-100, 100]^D$	High	High	None
5	$F_{Schwefel2.6} = \max \{ A_i x - A_i o \} \quad i = 1..D$	$[-100, 100]^D$	None	None	Medium
6	$F_{Rosenbrock} = \sum_{i=1}^{D-1} \left( 100(z_i^2 - z_{i+1})^2 + (z_i - 1)^2 \right)$	$[-100, 100]^D$	High	High	None
7	$F_{Rastrigin} = \sum_{i=1}^D \left( z_i^2 - 10 \cos(2\pi z_i) + 10 \right)$	$[-5.12, 5.12]^D$	None	High	None
8	$F_{Griewank-R} = \sum_{i=1}^D \frac{z_i^2}{4000} - \prod_{i=1}^D \cos\left(\frac{z_i}{\sqrt{i}}\right) + 1$	$[-\infty, +\infty]^D$	Weak	High	None
9	$F_{Ackley-R} = -20 \exp\left(-0.2 \sqrt{\frac{1}{D} \sum_{i=1}^D z_i^2}\right) - \exp\left(\frac{1}{D} \sum_{i=1}^D \cos(2\pi z_i)\right) + 20$	$[-32, 32]^D$	High	Weak	None
10	$F_{Rastrigin-R} = \sum_{i=1}^D (z_i^2 - 10 \cos(2\pi z_i) + 10)$	$[-5.12, 5.12]^D$	High	High	None
11	$F_{Weierstrass-R} = \sum_{i=1}^D \left( \sum_{k=0}^{k \max} [a^k \cos(2\pi b^k (z_i + 0.5))] \right) - D \sum_{k=0}^{k \max} [a^k \cos(\pi b^k)]$	$[-0.5, 0.5]^D$	High	High	None
12	$F_{Schwefel2.13} = \sum (A_i - B_i x)^2$ $A_i = \sum_{j=1}^D (a_{ij} \sin a_j + b_{ij} \cos a_j),$ $B_i = \sum_{j=1}^D (a_{ij} \sin x_j + b_{ij} \cos x_j)$	$[-\pi, \pi]^D$	Weak	Weak	None
13	$F_{GrieRos} = \sum_{i=1}^D F_{Griewank-R} (F_{Rosenbrock-R}(z_i, z_{i+1})), z_{D+1} = z_1$	$[-5, 5]^D$	High	High	None
14	$F_{Scaffer} = \sum_{i=1}^D (F(z_i, z_{i+1})), z_{D+1} = z_1$ $F(x, y) = 0.5 + \frac{\sin^2(\sqrt{x^2+y^2}) - 0.5}{(1+0.001(x^2+y^2))^2}$	$[-100, 100]^D$	Low	High	None
15	$F_{Hybrid1}$ (see $f_{16}$ in [42])	$[-5, 5]^D$	High	High	Medium
16	$F_{Hybrid2}$ (see $f_{19}$ in [42])	$[-5, 5]^D$	High	High	Medium

TABLE IV  
PARAMETERS CONFIGURATION OF APRMF BASED ON GA-DSCG

	10-D functions	30-D functions
Stopping criteria	100 000 evaluations	300 000 evaluations
Global search	Genetic algorithm	
Local search	DSCG	
Population size	50	
Encoding scheme	Real-coded	
Selection scheme	Roulette wheel selection	
Crossover operator	One point crossover $p_c = 0.7$	
Mutation operator	Gaussian mutation $p_m = 0.03$	
Initial local search intensity $t_{ls}^{initial}$	100 evaluations	300 evaluations

converged to very similar values. This serves to demonstrate that the proposed APRM framework is capable of adapting the individual learning intensity to suit the search problem in hand, regardless of its initial settings as well as the evolutionary and individual learning procedures used.

Fig. 13 illustrates the inability of the individual learning procedures in contributing to the optimization problems. For instance, the Simplex individual learning procedure is found to synergize poorly with ES or DE in contributing to the MA search on the Griewank function; see Fig. 13(a) and (c). Similarly, ES also did not synergize well with Simplex to form an MA that is appropriate for solving the Ackley

TABLE V  
OPTIMIZATION RESULTS USING APRMF (GA-DSCG) ON 10-D BENCHMARK FUNCTIONS. FEC REPRESENTS FUNCTION EVALUATION CALLS INCURRED TO CONVERGE AT THE GLOBAL OPTIMUM SOLUTION OF EACH RESPECTIVE FUNCTION

FEC		$F_{Sphere}$	$F_{Schwefel1.2}$	$F_{Elliptic}$	$F_{Schwefel1.2+Noise}$	$F_{Schwefel2.6}$	$F_{Rosenbrock}$	$F_{Rastrigin}$	$F_{Griewank-R}$
1e3	min	0	1.91e+3	2.59e-028	9.17e+3	2.09e+3	8.45e+0	0	7.63e-1
	7 <sup>th</sup>	0	2.83e+3	1.42e-027	1.28e+4	5.74e+3	4.50e+1	0	9.57e-1
	med.	0	2.83e+3	5.25e-027	1.43e+4	6.70e+3	5.86e+1	0	9.57e-1
	19 <sup>th</sup>	0	2.83e+3	1.13e-026	17420	7.71e+3	1.49e+2	0	9.57e-1
	max	0	3.50e+3	3.64e-026	2.28e+4	9.28e+3	1.39e+3	0	1.34e+0
	mean	0	2.80e+3	8.13e-027	1.50e+4	6.41e+3	2.82e+2	0	9.84e-1
	std	0	3.07e+2	8.33e-027	3.31e+3	1.80e+3	4.58e+2	0	1.11e-1
1e4	min	-	1.33e-6	-	2.27e+3	9.23e+1	0	-	0
	7 <sup>th</sup>	-	6.34e-5	-	4.63e+3	7.35e+2	0	-	1.82e-10
	med.	-	6.34e-5	-	6.18e+3	1.66e+3	2.02e-7	-	2.46e-2
	19 <sup>th</sup>	-	9.54e-5	-	7.15e+3	2.14e+3	1.03e+0	-	4.67e-2
	max	-	6.45e-3	-	1.02e+4	3.89e+3	4.94e+0	-	1.13e-1
	mean	-	4.01e-4	-	5.92e+3	1.54e+3	8.16e-1	-	2.95e-2
	std	-	1.28e-3	-	2.02e+3	9.26e+2	1.46e+0	-	2.96e-2
1e5	min	-	-	-	1.34e+2	7.36e-4	-	-	0
	7 <sup>th</sup>	-	-	-	8.70e+2	6.48e+1	-	-	0
	med.	-	-	-	1.22e+3	1.53e+2	-	-	0
	19 <sup>th</sup>	-	-	-	1.81e+3	2.57e+2	-	-	9.86e-3
	max	-	-	-	4.71e+3	1.20e+3	-	-	3.69e-2
	mean	-	-	-	1.48e+3	2.23e+2	-	-	8.07e-3
	std	-	-	-	1.01e+3	2.58e+2	-	-	1.14e-2

FEC		$F_{Ackley-R}$	$F_{Rastrigin-R}$	$F_{Weierstrass-R}$	$F_{Schwefel2.13}$	$F_{GrieRos}$	$F_{Scaffer}$	$F_{Hybrid1}$	$F_{Hybrid2}$
1e3	min	2.02e+1	6.78e+1	5.50e+0	1.35e+3	2.83e+0	1.23e-1	2.26e+2	9.10e+2
	7 <sup>th</sup>	2.04e+1	7.98e+1	8.12e+0	2.13e+3	4.56e+0	3.97e-1	2.98e+2	1.03e+3
	med.	2.05e+1	7.98e+1	9.02e+0	3167	5.15e+0	4.42e-1	3.20e+2	1.07e+3
	19 <sup>th</sup>	2.06e+1	7.98e+1	9.58e+0	3.78e+3	5.15e+0	6.16e-1	3.73e+2	1.11e+3
	max	2.08e+1	9.66e+1	1.08e+1	3.91e+3	6.25e+0	1.08e+0	4.71e+2	1.16e+3
	mean	2.05e+1	7.96e+1	8.67e+0	2.83e+3	4.81e+0	4.89e-1	3.37e+2	1.06e+3
	std	1.43e-1	5.43e+0	1.44e+0	8.52e+2	7.15e-1	2.21e-1	6.81e+1	6.72e+1
1e4	min	2.01e+1	2.79e+1	4.79e+0	1.01e-1	6.23e-1	3.89e-2	1.33e+2	6.76e+2
	7 <sup>th</sup>	2.02e+1	3.88e+1	5.68e+0	2.80e+1	8.83e-1	5.83e-2	1.68e+2	8.42e+2
	med.	2.03e+1	4.49e+1	6.90e+0	5.73e+1	1.09e+0	7.79e-2	1.96e+2	9.09e+2
	19 <sup>th</sup>	2.04e+1	5.55e+1	7.27e+0	9.25e+1	1.51e+0	1.e-1	2.11e+2	9.59e+2
	max	2.05e+1	7.98e+1	8.39e+0	3.99e+2	3.39e+0	1.66e-1	2.73e+2	1.03e+3
	mean	2.03e+1	4.88e+1	6.63e+0	8.36e+1	1.27e+0	8.49e-2	1.95e+2	8.85e+2
	std	1.11e-1	1.34e+1	1.04e+0	8.82e+1	6.41e-1	3.05e-2	3.65e+1	9.50e+1
1e5	min	2.0e+1	9.95e+0	4.17e+0	0	1.92e-1	1.94e-2	1.16e+2	4.32e+2
	7 <sup>th</sup>	2.02e+1	1.99e+1	5.17e+0	0	5.84e-1	3.89e-2	1.31e+2	6.64e+2
	med.	2.02e+1	2.29e+1	5.60e+0	0	6.91e-1	3.89e-2	1.37e+2	7.90e+2
	19 <sup>th</sup>	2.03e+1	2.80e+1	6.32e+0	1.84e-4	8.27e-1	7.77e-2	1.44e+2	8.e+2
	max	2.04e+1	3.38e+1	7.92e+0	3.52e-1	1.16e+0	9.72e-2	1.59e+2	8.26e+2
	mean	2.02e+1	2.30e+1	5.70e+0	2.38e-2	7.07e-1	4.99e-2	1.37e+2	7.21e+2
	std	1.05e-1	6.35e+0	1.01e+0	7.84e-2	2.07e-1	2.66e-2	1.18e+1	1.20e+2

function, as shown in Fig. 13(b). Consequently, the APRM frameworks, i.e., APRMF1 and APRMF2, adapt by reducing the expected individual learning intensity of the population as the search proceeds, when knowledge on the inability of individual learning compared to the stochastic GA operators is learned. Thus a downward trend in the individual learning/global search ratio can be observed in Fig. 13(a)–(c).

### B. Computational Complexity

The time complexity of a canonical MA can be easily derived as the order of  $O\{[n_{gen} \times t_{gs} \times \tau_{eval}] + [(n_{gen} \times n) \times t_{il} \times \tau_{eval}]\}$ , where  $n_{gen}$  is the maximum number of generations evolved during the search process,  $\tau_{eval}$  is the time taken for one objective function evaluation while  $t_{gs}$ ,  $n$ , and  $t_{il}$  have been defined in the previous sections. Hence,  $n_{gen} \times popsize$

TABLE VI  
OPTIMIZATION RESULTS USING APRMF (GA-DSCG) ON 30-D BENCHMARK FUNCTIONS. FEC REPRESENTS FUNCTION EVALUATION CALLS INCURRED TO CONVERGE AT THE GLOBAL OPTIMUM SOLUTION OF EACH RESPECTIVE FUNCTION

FEC		$F_{Sphere}$	$F_{Schwefel1.2}$	$F_{Elliptic}$	$F_{Schwefel1.2+Noise}$	$F_{Schwefel2.6}$	$F_{Rosenbrock}$	$F_{Rastrigin}$	$F_{Griewank-R}$
1e3	min	3.11e-27	3.85e+4	1.33e-24	7.67e+4	1.49e+4	2.60e+2	0	3.72e+0
	7 <sup>th</sup>	1.31e-26	71670	1.30e-23	1569	1.94e+4	3.09e+3	4.01e+0	4.32e+0
	med.	3.26e-26	8.34e+4	2.71e-23	119853	2.17e+4	4.79e+3	5.31e+0	6.16e+0
	19 <sup>th</sup>	3.26e-26	103222	8.15e-2	156792	2.45e+4	7.42e+3	2.89e+1	6.41e+0
	max	6.77e+2	107899	1.17e+1	173645	3.28e+4	1.15e+4	6.25e+1	6.41e+0
	mean	2.71e+1	8.30e+4	2.42e+0	1.27e+5	2.23e+4	5.29e+3	1.57e+1	5.51e+0
	std	1.35e+2	2.15e+4	4.55e+0	3.05e+4	4.32e+3	2.96e+3	1.80e+1	1.09e+0
1e4	min	-	7849	-	6.56e+4	1.06e+4	5.81e+1	0	4.22e-3
	7 <sup>th</sup>	-	1.26e+4	-	8.52e+4	1.31e+4	2.25e+2	0	5.47e-1
	med.	-	1.41e+4	-	9.06e+4	1.43e+4	4.98e+2	0	6.21e-1
	19 <sup>th</sup>	-	1.62e+4	-	107937	1.62e+4	1.14e+3	2.77e-2	7.23e-1
	max	-	2.70e+4	-	156792	2.41e+4	2.14e+3	5.98e+0	1.05e+0
	mean	-	1.52e+4	-	1.01e+5	1.47e+4	6.93e+2	6.66e-1	6.06e-1
	std	-	5.17e+3	-	2.54e+4	2.94e+3	5.84e+2	1.60e+0	2.41e-1
1e5	min	-	0	-	3.14e+4	5.93e+3	1.52e-7	-	0
	7 <sup>th</sup>	-	0	-	41743	7.23e+3	8.82e+0	-	0
	med.	-	0	-	4.37e+4	8.37e+3	1.56e+1	-	0
	19 <sup>th</sup>	-	0	-	4.90e+4	9.71e+3	2.86e+1	-	0
	max	-	8.41e+3	-	6.43e+4	1.13e+4	1.73e+2	-	9.86e-3
	mean	-	3.36e+2	-	4.55e+4	8.48e+3	3.30e+1	-	1.04e-3
	std	-	1.68e+3	-	6.91e+3	1.57e+3	4.10e+1	-	2.45e-3
3e5	min	-	-	-	2.57e+4	4.45e+3	0	-	0
	7 <sup>th</sup>	-	-	-	3.15e+4	6.03e+3	1.34e-6	-	0
	med.	-	-	-	3.59e+4	6.39e+3	1.10e+0	-	0
	19 <sup>th</sup>	-	-	-	4.03e+4	7.21e+3	1.32e+1	-	0
	max	-	-	-	5.42e+4	9.14e+3	5.79e+1	-	9.86e-3
	mean	-	-	-	3.61e+4	6.66e+3	8.27e+0	-	8.76e-4
	std	-	-	-	6.63e+3	1.28e+3	1.29e+1	-	2.36e-3

FEC		$F_{Ackley-R}$	$F_{Rastrigin-R}$	$F_{Weierstrass-R}$	$F_{Schwefel2.13}$	$F_{GrieRos}$	$F_{Scaffer}$	$F_{Hybrid1}$	$F_{Hybrid2}$
1e3	min	2.07e+1	3.83e+2	3.09e+1	4.22e+4	2.87e+1	8.51e-1	1.33e+2	8.47e+2
	7 <sup>th</sup>	2.08e+1	4.41e+2	3.38e+1	7.07e+4	5.88e+1	2.82e+0	1.48e+2	9.07e+2
	med.	2.09e+1	4.80e+2	3.58e+1	120430	8.39e+4	3.14e+0	1.53e+2	9.31e+2
	19 <sup>th</sup>	2.11e+1	4.86e+2	3.79e+1	140507	160182	3.93e+0	2.47e+2	9.57e+2
	max	2.11e+1	5.16e+2	3.86e+1	182762	162441	4.84e+0	5.21e+2	9.68e+2
	mean	2.09e+1	4.66e+2	3.58e+1	1.11e+5	7.58e+4	3.31e+0	2.16e+2	9.28e+2
	std	1.21e-1	3.71e+1	2.14e+0	4.e+4	7.14e+4	8.94e-1	1.19e+2	3.05e+1
1e4	min	2.05e+1	2.49e+2	2.10e+1	1.60e+4	7.98e+0	8.51e-1	1.16e+2	5.26e+2
	7 <sup>th</sup>	2.07e+1	3.39e+2	3.04e+1	3.42e+4	1.37e+1	1.27e+0	1.23e+2	7.70e+2
	med.	2.08e+1	3.39e+2	3.12e+1	4.63e+4	2.06e+1	1.54e+0	1.27e+2	8.34e+2
	19 <sup>th</sup>	2.08e+1	3.92e+2	3.23e+1	51674	3.16e+1	1.85e+0	1.31e+2	8.94e+2
	max	2.09e+1	4.69e+2	3.58e+1	7.44e+4	2.13e+2	2.67e+0	1.39e+2	9.45e+2
	mean	2.08e+1	3.64e+2	3.12e+1	4.44e+4	3.76e+1	1.59e+0	1.27e+2	8.17e+2
	std	9.90e-2	5.36e+1	2.79e+0	1.32e+4	5.30e+1	4.67e-1	6.21e+0	1.05e+2
1e5	min	2.e+1	1.79e+2	2.10e+1	3.29e+0	4.71e+0	2.45e-1	1.03e+2	5.03e+2
	7 <sup>th</sup>	2.06e+1	2.34e+2	2.93e+1	4.41e+2	6.84e+0	6.29e-1	1.12e+2	5.75e+2
	med.	2.07e+1	2.51e+2	3.02e+1	1.63e+3	8.68e+0	7.72e-1	1.17e+2	5.98e+2
	19 <sup>th</sup>	2.08e+1	2.82e+2	3.12e+1	2.79e+3	1.25e+1	9.29e-1	1.19e+2	6.56e+2
	max	2.09e+1	3.38e+2	3.32e+1	5.87e+3	2.22e+1	1.54e+0	1.21e+2	7.43e+2
	mean	2.07e+1	2.55e+2	2.98e+1	1.87e+3	9.89e+0	8.16e-1	1.15e+2	6.12e+2
	std	1.86e-1	4.29e+1	2.49e+0	1.70e+3	4.13e+0	3.26e-1	4.81e+0	5.87e+1
3e5	min	2.e+1	1.71e+2	2.10e+1	2.42e-6	4.71e+0	2.34e-1	1.03e+2	4.78e+2
	7 <sup>th</sup>	2.06e+1	1.92e+2	2.82e+1	8.22e+0	6.28e+0	4.31e-1	1.07e+2	4.98e+2
	med.	2.07e+1	2.14e+2	2.99e+1	1.40e+2	6.84e+0	5.21e-1	1.13e+2	5.26e+2
	19 <sup>th</sup>	2.08e+1	2.33e+2	3.04e+1	6.64e+2	8.16e+0	6.85e-1	1.16e+2	5.51e+2
	max	2.08e+1	2.91e+2	3.32e+1	2.83e+3	1.38e+1	8.76e-1	1.19e+2	6.45e+2
	mean	2.06e+1	2.17e+2	2.93e+1	4.42e+2	7.72e+0	5.41e-1	1.12e+2	5.34e+2
	std	1.91e-1	3.36e+1	2.54e+0	6.72e+2	2.26e+0	1.88e-1	5.12e+0	4.31e+1



TABLE VII  
MEMETIC ALGORITHMS OR HYBRID EA-LOCAL SEARCH  
USED IN COMPARISON

Algorithm name	Description
<i>BLX-GL50</i>	Hybrid Real-Coded Genetic Algorithms [43]
<i>BLX-MA</i>	Real-coded memetic algorithm with adaptive local-search probability and local search length [44]
<i>DMS-L-PSO</i>	Dynamic multi-swarm particle swarm optimizer with local search [45]
<i>EDA</i>	Continuous Estimation of Distribution Algorithms [46]
<i>DEshcSPX</i>	Differential evolution with crossover-based local search [47]
<i>G-CMAES</i>	Restart CMA Evolution Strategy With Increasing Population Size [48]

represents the total number of chromosomes that undergo individual learning in the entire search.

APrMF enhanced the canonical MA by introducing the *Individual Learning Intensity Estimation Scheme* which is made up of two main parts.

- 1) Identify the  $k$  nearest chromosomes, for which the time complexity is of the order of  $O\{(n_{\text{gen}} \times n)^2 \times \tau_{\text{dis}}\}$  where  $\tau_{\text{dis}}$  is the time taken to perform the distance measure between any two chromosomes.
- 2)  $\gamma$  is the time to estimate the upper bound and expected learning intensity. The total time complexity incurred throughout the APrMF search is of the order of  $O\{(n_{\text{gen}} \times n) \times \gamma\}$ .

Hence, the total time complexity incurred by APrMF over the canonical MA is of the order of  $O\{(n_{\text{gen}} \times n)^2 \times \tau_{\text{dis}} + [(n_{\text{gen}} \times n) \times \gamma]\}$ . Note that since  $\tau_{\text{dis}}$  and  $\gamma$  are relatively small (order of microseconds) especially on complex optimization problems where function evaluations are computationally expensive [10], i.e.,  $\tau_{\text{eval}}$  is usually large (order of minutes or more), the extra cost incurred may be considered to be negligible.

### C. Simplicity and Robustness

In contrast to the  $f_{il}$ ,  $\Omega_{il}$ , and  $t_{il}$  control parameters in a canonical MA, APrMF represents a much simpler framework since it has only a single  $t_{il}^{\text{initial}}$  parameter. Furthermore, from the results reported in Figs. 11–13, the APrMF has been demonstrated to adapt the local search intensity  $t_{il}$  competently at runtime, regardless of the initial setting for  $t_{il}^{\text{initial}}$ , thus producing search performances that are superior to the canonical MA counterparts on all the benchmark problems considered. For instance, for the same initial configuration, APrMF is shown to increase the value of  $t_{il}$  to suit the Sphere landscape, while the reverse is observed on the Step function. In another example, both the APrMF1 and APrMF2 converged to robust search performances and global/individual learning ratio on the Griewank function; see Fig. 12(d). Hence, APrMF not only converges to robust solutions, but also offers ease of implementations as an added advantage.

## V. APRMF WITH COMPARISON TO OTHER EVOLUTIONARY AND MEMETIC APPROACHES

In this section we provide a comprehensive empirical study of APrMF and a detailed comparison to several recent state-of-the-art evolutionary, memetic and/or hybrid evolutionary local search approaches using the test suite proposed in the Congress on Evolutionary Computation (CEC'05) [42]. These are comprehensive collections of unimodal/multimodal, discrete/continuous, epistatic/non-epistatic and hybridized test functions used for comparison in literature. The list of functions and their characteristics are summarized here in Table III.<sup>2</sup>

The search performance of APrMF based on GA-DSCG for the 10-D and 30-D versions of the benchmark functions are summarized in Tables V and VI, respectively. In the tables, results are presented for  $10^3$ ,  $10^4$ ,  $10^5$  and  $D * 10^4$  function evaluations ( $D$  is the dimensionality of the benchmark problems considered). At each of the evaluation points, the objective function errors of 25 independent runs are sorted and the best, the 7th, the median, the 19th and the worst results together with the mean and standard deviation are presented in the tables. The parametric configuration of the GA-DSCG used is also summarized in Table IV.

For rotated functions (8, 9, 10, 11, and 13):  $\mathbf{z} = \mathbf{M}_{\text{rotate}}(\mathbf{x} - \mathbf{o})$ .

For other functions:  $\mathbf{z} = \mathbf{x} - \mathbf{o}$ , where  $\mathbf{o}$  is the shifted global optimum,  $\mathbf{M}_{\text{rotate}}$  is the rotation matrix.

Using the results obtained in Tables V and VI, we pit APrMF against other memetic and hybrid evolutionary local search approaches. The list of algorithms used here for comparisons were reported in the recent CEC'05 which significantly outperform many others in the literature. Table VII provides a brief description of these algorithms, while Tables VIII and IX summarize their search performance compared to the APrMF in solving the same set of benchmark problems. For fair comparison, the same performance metric used in CEC'05 has been maintained. Entries in each table are the average number of function evaluations for all the successful runs (among 25 independent runs). For fair comparisons, the accuracy level of convergence,  $\varepsilon$ , is set to  $10^{-6}$  for functions 1 to 5 and  $10^{-2}$  for all others, similar to that used in the CEC 2005 benchmark studies. Overall, APrMF outperforms all the other methods on the unimodal, multimodal, discrete, continuous, epistatic, and non-epistatic 10- and 30-dimensional benchmark problems. On the hybridized problems, i.e., functions 15 and 16 in Table III, competitive results have been obtained for APrMF compared to the other approaches considered.

A further comparative study of APrMF (also based on GA-DSCG for consistency) to recent advance evolutionary algorithms is also provided here and the results are summarized in Fig. 14. In particular, we pit APrMF against the fast evolutionary strategy [49], fast evolutionary programming [50] orthogonal GA (OGA/Q) [51], and hybrid Taguchi-genetic

<sup>2</sup>Due to space constraints, we present only the results of GA-DSCG on the 10-D and 30-D benchmark functions in this paper. For the results on other modes of synergy between evolutionary and individual learning MA, the reader may contact the authors for details.

TABLE VIII

SUCCESS MEASURE OF THE ALGORITHMS IN SOLVING THE 10-D BENCHMARK FUNCTIONS. FOR INSTANCE, 0.6 (25) ON  $F_{\text{Sphere}}$  IMPLIES THAT APRMF INCURRED AN AVERAGE OF (0.6\*1000) FUNCTION EVALUATION CALLS ON 25 SUCCESSFUL INDEPENDENT RUNS. A '-' ENTRY IN THE TABLE IMPLIES THAT THE RESPECTIVE ALGORITHM FAILS TO CONVERGE TO THE GLOBAL OPTIMUM. BOLD ITALIC ALSO HIGHLIGHTS THE BEST SEARCH PERFORMANCE (BASED ON PAIR-WISE T-TEST BETWEEN EACH RESPECTIVE ALGORITHM PAIRS)

	$F_{\text{Sphere}}$	$F_{\text{Schwefel1.2}}$	$F_{\text{Elliptic}}$	$F_{\text{Rosenbrock}}$	$F_{\text{Griewank-R}}$	$F_{\text{Rastrigin}}$	$F_{\text{Schwefel2.13}}$
<i>APrMF</i>	<b>0.6(25)</b>	11.0(25)	<b>0.6(25)</b>	<b>10.5(25)</b>	<b>17.6(20)</b>	<b>1.0(25)</b>	<b>31.9(19)</b>
<i>BLX-GL50</i>	19.0(25)	41.04(25)	-	51.8(25)	20.8(9)	20.4(3)	51.59(13)
<i>BLX-MA</i>	12.0(25)	36.96(25)	-	-	-	69.8(18)	-
<i>DMS-L-PSO</i>	12.0(25)	12.0 (25)	11.7(25)	54.7(25)	94.8(4)	35.7(25)	54.1(19)
<i>EDA</i>	10.0(25)	11.0(25)	16.3(23)	68.2(25)	75.9(1)	-	35.2(10)
<i>DEshcSPX</i>	22.9(25)	34.7(25)	89.2(20)	50.2(23)	97.3(21)	89.7(5)	-
<i>G-CMAES</i>	1.61(25)	<b>2.38(25)</b>	6.5(25)	<b>10.8(25)</b>	-	4.67(25)	<b>32.7(19)</b>

TABLE IX

RESULT OF T-TEST WITH 95% CONFIDENCE LEVEL COMPARING STATISTICAL VALUES FOR APRMF AND THOSE OF THE OTHER ALGORITHMS IN SOLVING THE 10-D BENCHMARK FUNCTIONS (s+, s-, AND ≈ INDICATE THAT APRMF IS SIGNIFICANTLY BETTER, SIGNIFICANTLY WORSE, AND INDIFFERENT, RESPECTIVELY)

	$F_{\text{Sphere}}$	$F_{\text{Schwefel1.2}}$	$F_{\text{Elliptic}}$	$F_{\text{Rosenbrock}}$	$F_{\text{Griewank-R}}$	$F_{\text{Rastrigin}}$	$F_{\text{Schwefel2.13}}$
<i>BLX-GL50</i>	s+	s+	-	s+	s+	s+	s+
<i>BLX-MA</i>	s+	s+	-	-	-	s+	-
<i>DMS-L-PSO</i>	s+	s+	s+	s+	s+	s+	s+
<i>EDA</i>	s+	≈	s+	s+	s+	-	s+
<i>DEshcSPX</i>	s+	s+	s+	s+	s+	s+	-
<i>G-CMAES</i>	s+	s-	s+	≈	-	s+	≈

TABLE X

SUCCESS MEASURE OF THE ALGORITHMS IN SOLVING THE 30-D BENCHMARK FUNCTIONS. A '-' ENTRY IN THE TABLE IMPLIES THAT THE RESPECTIVE ALGORITHM FAILS TO CONVERGE TO THE GLOBAL OPTIMUM. BOLD ITALIC ALSO HIGHLIGHTS THE BEST SEARCH PERFORMANCE (BASED ON PAIR-WISE T-TEST BETWEEN EACH RESPECTIVE ALGORITHM PAIRS)

	$F_{\text{Sphere}}$	$F_{\text{Schwefel1.2}}$	$F_{\text{Elliptic}}$	$F_{\text{Griewank-R}}$	$F_{\text{Rastrigin}}$
<i>APrMF</i>	<b>0.6(25)</b>	87.0(25)	<b>1.0(25)</b>	<b>25.5 (25)</b>	<b>5.9(25)</b>
<i>BLX-GL50</i>	58.05(25)	159.6(25)	-	66.3(25)	-
<i>BLX-MA</i>	32.13(25)	-	-	-	238.8(9)
<i>DMS-L-PSO</i>	5.13(25)	129.6(25)	285.3(21)	57.4(24)	-
<i>EDA</i>	150.1(25)	159.6(25)	219.3(25)	129.93(25)	-
<i>DEshcSPX</i>	89.4(25)	299.3(2)	-	148.1(21)	-
<i>G-CMAES</i>	4.5(25)	<b>13.0(25)</b>	42.7(25)	-	<b>6.1(25)</b>

TABLE XI

RESULT OF T-TEST WITH 95% CONFIDENCE LEVEL COMPARING STATISTICAL VALUES FOR APRMF AND THOSE OF THE OTHER ALGORITHMS IN SOLVING THE 30-D BENCHMARK FUNCTIONS (s+, s-, AND ≈ INDICATE THAT APRMF IS SIGNIFICANTLY BETTER, SIGNIFICANTLY WORSE, AND INDIFFERENT, RESPECTIVELY)

	$F_{\text{Sphere}}$	$F_{\text{Schwefel1.2}}$	$F_{\text{Elliptic}}$	$F_{\text{Griewank-R}}$	$F_{\text{Rastrigin}}$
<i>BLX-GL50</i>	s+	s+	-	s+	-
<i>BLX-MA</i>	s+	-	-	-	s+
<i>DMS-L-PSO</i>	s+	s+	s+	s+	-
<i>EDA</i>	s+	s+	s+	s+	-
<i>DEshcSPX</i>	s+	s+	-	s+	-
<i>G-CMAES</i>	s+	s-	s+	-	-

algorithm (HTGA) [52] on common benchmark functions used that includes the non-rotated Ackley, Griewank, and Rastrigin functions, described previously in Table III. The results in Fig. 14 indicate the superior performance of the APRMF in

converging to the global optimum more efficiently than all the counterparts considered, three of which were published recently in the IEEE TRANSACTIONS ON EVOLUTIONARY COMPUTATION.

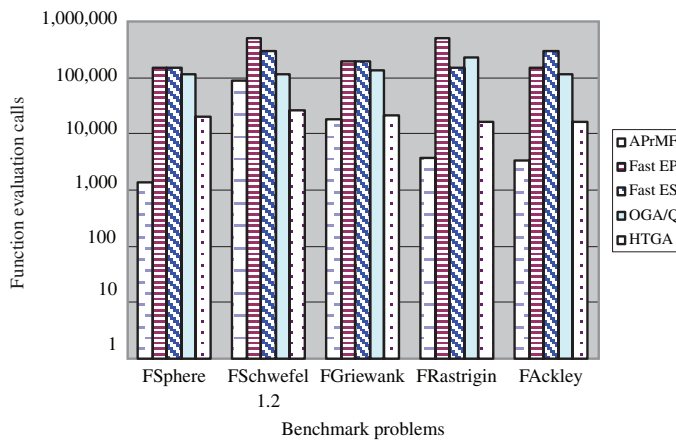


Fig. 14. Number of function evaluations used by different algorithms in solving the 30-D benchmark functions.

## VI. CONCLUSION

One major issue pertaining to adaptation is to determine during runtime whether evolution or individual learning should be directed, with the objective of accelerating an MA search. In contrast to earlier works which rely on semi-*ad hoc* or heuristics methods, the essential backbone of our framework is a probabilistic model derived for establishing the theoretical upper bound of individual learning intensity. In particular, we model the MA as a process involving the decision of embracing the separate actions of evolution or individual learning and analyze the probability of each process in locating the global optimum. This leads to a novel PrMF, a quantitative formalization for adaptation by governing the learning intensity of each individual according to the theoretical upper bound while the search progresses.

An important aspect of PrMF is the determination of certain probabilistic measures based on the neighborhood structure of a local search. We showed in this paper that in practice, such probabilistic measures can be estimated reliably. For this purpose, we outlined the formalization of an APrMF, to demonstrate how the PrMF can be put into practice. For validation, empirical and theoretical studies on representative benchmark problems commonly used in the literature are then presented to demonstrate the characteristics and efficacies of the probabilistic memetic framework. Subsequent comparisons to recent state-of-the-art evolutionary algorithms, memetic algorithms, and hybrid evolutionary local demonstrate that the proposed framework converges to good solutions efficiently.

This paper has established the groundwork for the formalization of a quantitative framework for adaptive MAs. On the one hand, it can be viewed as a paradigm shift on how adaptation on MAs can be dealt with. From a research point of view, this perception is likely to be more applicable and further research is warranted. On the other hand, it can be perceived as an alternative on how one can quantitatively characterize the synergy level between evolutionary and individual learning in MAs. This is more likely to be applicable from an implementation point of view.

## REFERENCES

- [1] S. Kirkpatrick, C. D. Gelatt, and M. P. Vecchi, "Optimization by simulated annealing," *Sci.*, vol. 220, no. 4598, pp. 671–680, 1983.
- [2] T. Back, F. Hoffmeister, and H. Schwefel, "Survey of Evolution Strategies," in *Proc. 4th Int. Con. Genetic Algorithms*, 1991, pp. 2–9.
- [3] L. Davis, *Handbook of Genetic Algorithms*. New York: Van Nostrand Reinhold, 1991.
- [4] Z. Michalewicz, *Genetic Algorithms + Data Structures = Evol. Programs*, 2nd ed. New York: Springer-Verlag, 1994.
- [5] A. Auger and N. Hansen, "Reconsidering the progress rate theory for evolution strategies in finite dimensions," in *Proc. Genetic Evol. Comput. Conf. (GECCO 2006)*, pp. 445–452.
- [6] Y. S. Ong and A. J. Keane, "Meta-lamarckian learning in memetic algorithms," *IEEE Trans. Evol. Comput.*, vol. 8, no. 2, pp. 99–110, Apr. 2004.
- [7] A. Torn and A. Zilinskas, *Global Optimization*. LNCS vol. 350, New York: Springer-Verlag, 1989.
- [8] P. Moscato, "On evolution, search, optimization, genetic algorithms and martial arts: Towards memetic algorithms," Caltech Concurrent Computation Program, Publication Report 790, 1989.
- [9] C. Houck, J. Joines, and M. Kay, "Utilizing lamarckian evolution and the baldwin effect in hybrid genetic algorithms," Meta-Heuristic Research and Applicat. Group, Depart. Ind. Eng., North Carolina State Univ., Raleigh, CA, NCSU-IE Tech. Report 96-01, 1996.
- [10] A. Vicini and D. Quagliarella, "Airfoil and wing design using hybrid optimization strategies," *Amer. Inst. Aeronautics Astronautics J.*, vol. 37, no. 5, pp. 634–641, 1999.
- [11] Y. S. Ong, P. B. Nair, and A. J. Keane, "Evolutionary optimization of computationally expensive problems via surrogate modeling," *Amer. Inst. Aeronautics Astronautics J.*, vol. 41, no. 4, pp. 687–696, 2003.
- [12] Z. Z. Zhou, Y. S. Ong, P. B. Nair, A. J. Keane, and K. Y. Lum, "Combining global and local surrogate models to accelerate evolutionary optimization," *IEEE Trans. Syst., Man Cybern., Part C: Applicat. Rev.*, vol. 37, no. 1, pp. 66–76, Jan. 2007.
- [13] W. E. Hart, "Adaptive global optimization with local search," Ph.D. thesis, Dept. Comput. Sci. Eng., Univ. California, San Diego, 1994.
- [14] K. W. C. Ku, M. W. Mak, and W. C. Siu, "A study of the lamarckian evolution of recurrent neural networks," *IEEE Trans. Evol. Comput.*, vol. 4, no. 1, pp. 31–42, Apr. 2000.
- [15] M. W. S. Land, "Evol. algorithms with local search for combinatorial optimization," Ph.D. thesis, Dept. Comput. Sci., Univ. California, San Diego, 1998.
- [16] N. K. Bambha, S. S. Bhattacharyya, J. Teich, and E. Zitzler, "Systematic integration of parameterized local search in evolutionary algorithm," *IEEE Trans. Evol. Comput.*, vol. 8, no. 2, pp. 137–155, Apr. 2004.
- [17] D. E. Goldberg and S. Voessner, "Optimizing global-local search hybrids," in *Proc. GECCO '99*, vol. 1. San Francisco, CA: Morgan Kaufmann, 1999, pp. 220–228.
- [18] A. Sinha, Y. Chen, and D. E. Goldberg, "Designing Efficient Genetic and Evolutionary Algorithm Hybrids," in *Recent Advances Memetic Algorithms*, New York: Springer-Verlag, 2005.
- [19] X. Yao, "Simulated annealing with extended neighbourhood," *Int. J. Com. Math.*, vol. 40, pp. 169–189, 1999.
- [20] N. Krasnogor and J. Smith, "A memetic algorithm with self-adaptive local search: TSP as a case study," in *Proc. Genetic Evol. Comput. Conf. (GECCO-2000)*, San Francisco, CA: Morgan Kaufman, 2000, pp. 987–994.
- [21] N. Krasnogor and J. Smith, "A tutorial for competent memetic algorithms: Model, taxonomy, and design issues," *IEEE Trans. Evol. Comput.*, vol. 9, no. 5, pp. 474–488, Oct. 2005.
- [22] Y. S. Ong, M. H. Lim, N. Zhu, and K. W. Wong, "Classification of adaptive memetic algorithms: A comparative study," *IEEE Trans. Syst., Man Cybern., Part B: Cybern.*, vol. 36, no. 1, pp. 141–152, Feb. 2006.
- [23] N. Noman and H. Iba, "Accelerating differential evolution using an adaptive local search," *IEEE Trans. Evol. Comput.*, vol. 12, no. 1, pp. 107–125, Feb. 2008.
- [24] M. Lozano, F. Herrera, N. Krasnogor, and D. Molina, "Real-coded memetic algorithms with crossover hill-climbing," *Evol. Comput. J.*, vol. 12, no. 3, pp. 273–302, 2004.
- [25] Y. S. Ong, N. Krasnogor, and H. Ishibuchi, "Special Issue on Memetic Algorithm," *IEEE Trans. Syst., Man Cybern., Part B: Cybern.*, vol. 37, no. 1, pp. 2–5, Feb. 2007.
- [26] Y. S. Ong, M. H. Lim, F. Neri, and H. Ishibuchi, "Special issue on emerging trends in soft computing: Memetic algorithms," *Soft Comput.-A Fusion Found., Methodologies Applicat.*, vol. 13, no. 8–9, pp. 1–2, Jul. 2009.

[27] J. E. Smith, "Co-evolving memetic algorithms: A review and progress report," *IEEE Trans. Syst., Man Cybern., Part B: Cybern.*, vol. 37, no. 1, pp. 6–17, Feb. 2007.

[28] A. Caponio, G. L. Cascella, F. Neri, N. Salvatore, and M. Sumne, "A fast adaptive memetic algorithm for online and offline control design of pmsm drives," *IEEE Trans. Syst., Man Cybern., Part B: Cybern.*, vol. 37, no. 1, pp. 28–41, Feb. 2007.

[29] D. Liu, K. C. Tan, C. K. Goh, and W. K. Ho, "A multiobjective memetic algorithm based on particle swarm optimization," *IEEE Trans. Syst., Man Cybern., Part B: Cybern.*, vol. 37, no. 1, pp. 42–50, Feb. 2007.

[30] M. Tang and X. Yao, "A memetic algorithm for VLSI floorplanning," *IEEE Trans. Syst., Man Cybern., Part B: Cybern.*, vol. 37, no. 1, pp. 62–69, Feb. 2007.

[31] J. Tang, M. H. Lim, and Y. S. Ong, "Diversity-adaptive parallel memetic algorithm for solving large scale combinatorial optimization problems," *Soft Comput. J.*, vol. 11, no. 9, pp. 873–888, Jul. 2007.

[32] Z. Zhu, Y. S. Ong, and M. Dash, "Wrapper-filter feature selection algorithm using a memetic framework," *IEEE Trans. Syst., Man Cybern., Part B: Cybern.*, vol. 37, no. 1, pp. 70–76, Feb. 2007.

[33] D. H. Wolpert and W. G. MacReady, "No free lunch theorems for optimization," *IEEE Trans. Evol. Comput.*, vol. 1, no. 1, pp. 67–82, Apr. 1996.

[34] G. A. Croes, "A method for solving traveling salesman problems," *Operations Res.*, vol. 6, no. 6, pp. 791–812, Nov.–Dec. 1958.

[35] H. P. Schwefel, *Evolution and Optimum Seeking*. New York: Wiley, 1995.

[36] J. A. Nelder and R. Meade, "A simplex method for function minimization," *Comput. J.*, vol. 7, no. 4, pp. 308–313, 1965.

[37] M. J. D. Powell, "An efficient method for finding the minimum of a function of several variables without calculating derivatives," *Comput. J.*, vol. 7, no. 4, pp. 303–307, 1964.

[38] C. Zhu, R. H. Byrd, and J. Nocedal, "L-BFGS-B: Algorithm 778: L-BFGS-B, FORTRAN routines for large scale bound constrained optimization," *ACM Trans. Math. Software*, vol. 23, no. 4, pp. 550–560, 1997.

[39] M. D. McKay, R. J. Beckman, and W. J. Conover, "A comparison of three methods for selecting values of input variables in the analysis of output from a computer code," *Technometrics*, vol. 21, no. 2, pp. 239–245, 1979.

[40] R. Storn. Differential Evolution for Continuous Optimization [Online]. Available: <http://www.icsi.berkeley.edu>

[41] H. Beyer and H. Schwefel, "Evolution strategies—A comprehensive introduction," *Natural Comput.*, vol. 1, no. 1, pp. 3–52, Mar. 2002.

[42] J. J. Liang, P. N. Suganthan, and K. Deb, "Novel composition test functions for numerical global optimization," in *Proc. IEEE Swarm Intell. Symp.*, 2005, pp. 68–75.

[43] C. Garca-Martinez and M. Lozano, "Hybrid real-coded genetic algorithms with female and male differentiation," in *Proc. IEEE Congr. Evol. Comput.*, vol. 1. Edinburgh, U.K., 2005, pp. 896–903.

[44] D. Molina, F. Herrera, and M. Lozano, "Adaptive local search parameters for real-coded memetic algorithms," in *Proc. IEEE Congr. Evol. Comput.*, vol. 1. Edinburgh, U.K., 2005, pp. 888–895.

[45] J. J. Liang and P. N. Suganthan, "Dynamic multi-swarm particle swarm optimizer with local search," in *Proc. IEEE Congr. Evol. Comput.*, vol. 1. Edinburgh, U.K., 2005, pp. 522–528.

[46] B. Yuan and M. Gallagher, "Experimental results for the special session on real-parameter optimization at CEC 2005: A simple, continuous EDA," in *Proc. 2005 Congr. Evol. Comput. (CEC'05)*, pp. 1792–1799.

[47] N. Noman and H. Iba, "Enhancing differential evolution performance with local search for high dimensional function optimization," in *Proc. 2005 Congr. Evol. Comput. (CEC'05)*, pp. 967–974.

[48] A. Auger and N. Hansen, "A restart CMA evolution strategy with increasing population size," in *Proc. 2005 Congr. Evol. Comput. (CEC'05)*, pp. 1769–1776.

[49] X. Yao and Y. Liu, "Fast evolution strategies," *Control Cybern.*, vol. 26, no. 3, pp. 467–496, 1997.

[50] X. Yao, Y. Liu, and G. Lin, "Evolutionary programming made faster," *IEEE Trans. Evol. Comput.*, vol. 3, no. 2, pp. 82–102, Jul. 1999.

[51] Y. W. Leung and Y. Wang, "An orthogonal genetic algorithm with quantization for numerical optimization," *IEEE Trans. Evol. Comput.*, vol. 5, no. 1, pp. 41–53, Feb. 2001.

[52] J. T. Tsai, T. K. Liu, and J. H. Chou, "Hybrid Taguchi-genetic algorithm for global numerical optimization," *IEEE Trans. Evol. Comput.*, vol. 8, no. 2, pp. 365–377, Apr. 2004.

[53] M. H. Lim, S. Gustafson, N. Krasnogor, and Y. S. Ong, "Editorial to the first issue," *Memetic Comput.*, vol. 1, no. 1, pp. 1–2, Mar. 2009.

[54] I. Paenke, Y. Jin, and J. Branke, "Balancing population- and individual-level adaptation in changing environments," *Adaptive Behavior*, vol. 17, no. 2, pp. 153–174, 2009.

[55] G. Gutin and D. Karapetyan, "A selection of useful theoretical tools for the design and analysis of optimization heuristics," *Memetic Comput.*, vol. 1, no. 1, pp. 25–34, Mar. 2009.

[56] S. Hasan, R. Sarker, D. Essam, and D. Cornforth, "Memetic algorithms for solving job-shop scheduling problems," *Memetic Comput.*, vol. 1, no. 1, pp. 69–83, Mar. 2009.



**Quang Huy Nguyen** received the B.Eng. (Hons) degree in 2005 from the School of Computer Engineering (SCE), Nanyang Technological University (NTU), Singapore. He is working towards the Ph.D. degree.

He is now with the Center for Computational Intelligence, SCE, NTU. His research interests include evolutionary algorithm, memetic algorithms and theory.



**Yew-Soon Ong** received the Bachelors and Masters degrees in electrical and electronics engineering from Nanyang Technological University, Singapore, in 1998 and 1999, respectively, and the Ph.D. degree from the Computational Engineering and Design Center, University of Southampton, U.K., in 2002.

He is currently an Associate Professor with the School of Computer Engineering, Nanyang Technological University, Singapore, as well as Director of the Center for Computational Intelligence (C2I).

His current research interests include computational intelligence spanning: memetic computing, complex design, and machine learning.

Dr. Ong is co-technical Editor-in-Chief of *Memetic Computing* and Associate Editor of IEEE TRANSACTIONS ON SYSTEMS, MAN AND CYBERNETICS - PART B, and *International Journal of System Science and Soft Computing*. He is also chief editor of the book series on Evolutionary Learning and Optimization (Springer), and Chair of the Task Force on Memetic Algorithms in the IEEE Computational Intelligence Society–Emergent Technology Technical Committee.



**Meng-Hiot Lim** received the Ph.D. degree in electrical and computer engineering in 1989 from the University of South Carolina, Columbia.

He is currently an Associate Professor with the School of Electrical and Electronic Engineering, Nanyang Technological University, Singapore. He is concurrently the Deputy Director of the M.Sc. program in Financial Engineering (MFE) at the Center for Financial Engineering attached to the Nanyang Business School. He is one of the founding directors of the internationally well-regarded MFE program. Together with Dr. Ong, he was responsible for starting two important publications, both by Springer-Verlag: *Memetic Computing*, of which he is the Managing Editor-in-Chief, and *Series in Adaptation, Learning, and Optimization*, of which he is the Chief Editor.

He is current research focuses on both the theoretical and application aspects of memetic computing. He is an Associate Editor of IEEE TRANSACTIONS ON SYSTEMS, MAN AND CYBERNETICS - PART C.