

Kidney Disease: Improving Global Outcomes Summit Recommendations on Implementation of Diabetes Management in CKD: From Primary to Data-Driven Collaborative Care



Philip Kam-Tao Li^{1,2,3}, Michael Cheung⁴, Kai-Ming Chow^{1,2}, Maria Kwan Wa Leung⁵, Lee-Ling Lim^{1,6,7}, Juliana N.M. Lui¹, Andrea O.Y. Luk^{1,8}, Jo-Anne Manski-Nankervis^{9,10}, Samuel Seidu^{11,12}, Nikhil Tandon¹³, Adrian Liew¹⁴, Peter Lin¹⁵, Fei Chau Pang¹⁶, Na Tian¹⁷, Kohjiro Ueki^{18,19}, Martin C.S. Wong^{20,21,22,23}, Sophia Zoungas²⁴, Kit Man Loo²⁵, Kin Lai Chung²⁶, Victor Hin-Fai Hung²⁷, Huyen Thi Thanh Vu^{28,29}, Maggie Lee³⁰, Junne-Ming Sung³¹, Cheuk Chun Szeto^{1,2}, Man Wo Tsang³², Sunny Wong³², Jack Kit Chung Ng^{1,2,33}, Harriet Chung³⁴, Sydney C.W. Tang³⁵, Kenny Kung³⁶, Sing Leung Lui³⁷, David V.K. Chao³⁸, Coral Cyzewski⁴, Tanya Green⁴ and Juliana C.N. Chan^{1,6,8,33}

¹Department of Medicine and Therapeutics, The Chinese University of Hong Kong, Prince of Wales Hospital, Hong Kong Special Administrative Region, China; ²Carol and Richard Yu Peritoneal Dialysis Research Centre, Department of Medicine and Therapeutics, The Chinese University of Hong Kong, Prince of Wales Hospital, Hong Kong Special Administrative Region, China; ³International Association of Chinese Nephrologists, Shatin, Hong Kong Special Administrative Region, China; ⁴KDIGO, Brussels, Belgium; ⁵Department of Family Medicine, New Territories East Cluster, Hospital Authority, Hong Kong Special Administrative Region, China; ⁶Asia Diabetes Foundation, Hong Kong Special Administrative Region, China; ⁷Department of Medicine, Faculty of Medicine, Universiti of Malaya, Kuala Lumpur, Malaysia; ⁸Hong Kong Institute of Diabetes and Obesity, The Chinese University of Hong Kong, Prince of Wales Hospital, Hong Kong Special Administrative Region, China; ⁹Department of General Practice and Primary Care, The University of Melbourne, Melbourne, Australia; ¹⁰Primary Care and Family Medicine, Lee Kong Chian School of Medicine, Nanyang Technological University, Singapore, Singapore; ¹¹College of Medicine, Biological Sciences and Psychology, Diabetes Research Centre, University of Leicester, Leicester, UK; ¹²NIHR Applied Research Collaboration - East Midlands, Leicester, UK; ¹³Department of Endocrinology, All India Institute of Medical Sciences, Delhi, India; ¹⁴The Kidney and Transplant Practice, Mount Elizabeth Novena Hospital, Singapore; ¹⁵Canadian Heart Research Centre, Toronto, Ontario, Canada; ¹⁶Primary Healthcare Office, Health Bureau, Hong Kong Special Administrative Region, China; ¹⁷Department of Nephrology, General Hospital of Ningxia Medical University, Yinchuan, Ningxia, China; ¹⁸Department of Molecular Diabetology, Graduate School of Medicine, The University of Tokyo, Tokyo, Japan; ¹⁹Diabetes Research Center, Research Institute, National Center for Global Health and Medicine, Tokyo, Japan; ²⁰Centre for Health Education and Health Promotion, Jockey Club School of Public Health and Primary Care, The Chinese University of Hong Kong, Hong Kong Special Administrative Region, China; ²¹School of Public Health, Peking University, Beijing, China; ²²The Chinese Academy of Medical Sciences and Peking Union Medical College, Beijing, China; ²³School of Public Health, Fudan University, Shanghai, China; ²⁴School of Public Health and Preventive Medicine, Monash University, Melbourne, Victoria, Australia; ²⁵Diabetes and Endocrine Centre, Day Treatment Block and Children Wards, Prince of Wales Hospital, Hong Kong Special Administrative Region, China; ²⁶CCE Office, Prince of Wales Hospital, New Territories East Cluster, Hong Kong Special Administrative Region, China; ²⁷Department of Medicine and Geriatrics, Princess Margaret Hospital, Hong Kong Special Administrative Region, China; ²⁸Department of Geriatrics, Hanoi Medical University, Hanoi, Vietnam; ²⁹Scientific Research Department, National Geriatric Hospital, Hanoi, Vietnam; ³⁰Department of Medicine and Geriatrics, New Territories West Cluster, Hospital Authority, Hong Kong Special Administrative Region, China; ³¹Department of Internal Medicine, National Cheng Kung University Hospital, Taiwan; ³²Department of Medicine and Geriatrics, United Christian Hospital, Hong Kong Special Administrative Region, China; ³³Li Ka Shing Institute of Health Sciences, The Chinese University of Hong Kong, Prince of Wales Hospital, Hong Kong Special Administrative Region, China; ³⁴Shumshuipo District Health Centre, Hong Kong Special Administrative Region, China; ³⁵Division of Nephrology, Department of Medicine, School of Clinical Medicine, The University of Hong Kong, Hong Kong Special Administrative Region, China; ³⁶The GBA Healthcare Group, Hong Kong Special Administrative Region, China; ³⁷Department

Correspondence: Philip Kam-Tao Li, Department of Medicine and Therapeutics, Carol and Richard Yu PD Research Centre, The Chinese University of Hong Kong, Prince of Wales Hospital, 30–32 Ngan Shing St, Shatin, New Territories, Hong Kong SAR, China. E-mail: philipli@cuhk.edu.hk; or Juliana C. N. Chan, Department of Medicine and Therapeutics, Hong Kong Institute of Diabetes and

Obesity, The Chinese University of Hong Kong, Prince of Wales Hospital, Shatin, New Territories, Hong Kong SAR, China. E-mail: jchan@cuhk.edu.hk

Received 14 March 2025; revised 4 June 2025; accepted 9 June 2025; published online 18 June 2025

of Medicine, Tung Wah Hospital, Hong Kong Special Administrative Region, China; and ³⁸Department of Family Medicine and Primary Health Care, United Christian Hospital, Hong Kong Special Administrative Region, China

Type 2 diabetes and chronic kidney disease (CKD) are preventable and treatable. Their silent and progressive clinical course calls for structured assessment with timely feedback to patients and care providers for activating decision-making. Apart from CKD, patients with diabetes can have complications affecting multiple organs, notably the cardiovascular system, eyes, and feet. International practice guidelines recommend annual assessment of the eyes, feet, blood, and urine to detect silent complications and measure cardiovascular-kidney-metabolic (CKM) risk factors to ensure early intervention, including treatment to multiple targets and use of organ-protective drugs. In this report, we highlight the barriers and gaps in the implementation of practice guidelines in managing diabetes in CKD with proposed solutions to overcome such barriers. By improving the practice environment and workflow, nurses can be trained to perform protocol-guided evaluation under medical supervision. The systematic data collection enables physicians to make timely decisions, including drug prescriptions and referrals to other specialists to promote collaborative care, whereas nurses can use the personalized data to empower patient self-management and improve health literacy. This ongoing data collection will form a register to align payers, providers, and patients in delivering data-driven and value-based care with the creation of real-world evidence to verify treatment effectiveness and identify care gaps while providing on-the-job training. When accompanied by a biobank, the ongoing collection and analysis of this multidimensional data will refine diagnosis, classification, prognosis, and treatment in pursuit of precision medicine.

Kidney Int Rep (2025) 10, 2551–2565; <https://doi.org/10.1016/j.ekir.2025.06.010>

KEYWORDS: CKD; collaborative care; diabetes; KDIGO; primary care; specialist care

© 2025 Published by Elsevier, Inc., on behalf of the International Society of Nephrology. This is an open access article under the CC BY-NC-ND license (<http://creativecommons.org/licenses/by-nc-nd/4.0/>).

Introduction

CKD affects 25% to 40% of patients with diabetes, predominantly type 2 diabetes mellitus (referred to hereafter as diabetes).^{1,2} Both conditions are complex, progressive, and silent in early stages. To ensure timely intervention, CKM risk markers, including blood pressure (BP), body weight, glycosylated hemoglobin (HbA1c), low-density lipoprotein cholesterol, estimated glomerular filtration rate (eGFR) and urinary albumin-to-creatinine ratio (UACR), should be regularly measured, managed, and monitored. Self-management, regular medical review and treatment adherence require patient education, empowerment, and engagement. To achieve these multiple goals, a redesign of workflow, team structure, and clinic setting is needed to increase the efficiency and effectiveness of diabetes assessment, management, and education aimed at reducing hospitalization, morbidities, and premature mortality.³

The World Health Organization has included self-monitoring kits; laboratory assessments; and medications, notably statins, renin-angiotensin system inhibitors (RASi), and sodium-glucose cotransporter-2 inhibitor (SGLT2i) as essential management tools⁴⁻⁶; albeit enormous care gaps remain even in countries with medical coverage. On average, 17 years is needed to translate research into practice and policies in health care.⁷ This might be due to insufficient awareness, infrastructure, or alignment among all stakeholders,

including but not limited to researchers, providers, and payors.⁸

In July 2023, medical experts and educators, administrators, and policymakers from around the world assembled in Hong Kong for a 2-day workshop to identify barriers and enablers in implementing the 2022 Kidney Disease: Improving Global Outcomes (KDIGO) Practice Guideline for Diabetes Management in CKD.⁹ The meeting was conceptualized by the coauthors in February 2023 (PKTL and JCNC) with assistance from KDIGO. This was followed by invitation of experts divided into 4 groups and tasked to review the literature and provide recommendations on the following topics: (i) building optimal models of care in settings with different resources, (ii) enhancing the role of primary care providers (PCPs) in the management of patients with CKD and diabetes, (iii) fostering collaborative care among interdisciplinary specialists, and (iv) identifying factors that drive the success of care models. The 2-day meeting was attended by > 300 health care professionals, including officials with diabetes and kidney nurse specialists representing patients' voices. The meeting commenced with lectures delivered by additional experts, and it was followed by a 1-day workshop with deliberations among all faculty members. The lead of each group then submitted the consensus recommendations on the 4 topics to the coauthors, who finalized the report with the approval of all faculty members (<https://kdigo.org/conferences/primary-care-implementation-summit/>).

Premise for Using Data to Drive Actions and Implement Evidence-Based Guidelines

More than 3 decades of innovative research and best practices have confirmed that diabetes and kidney disease can be prevented, managed, and controlled, despite the enormous care gaps. Nevertheless, a patient with diabetes and CKD may encounter many care providers, including primary care doctors, internists, endocrinologists, nephrologists, cardiologists, traditional medicine practitioners, allied health workers, trained community workers, or peer supporters, with considerable variations in quality of care received. This may be because of variations in professional knowledge, health care systems, access to technologies, and medical coverage. These variations make regular and structured assessment imperative for quality assurance, benchmarking, and identifying care gaps.

Diabetes and its complications, notably CKD, are silent disease states whose risk factors and treatment targets are often characterized by numerical values, thus making regular measurements imperative in guiding medical decisions and empowering patient self-management. Here, doctors have the integrated knowledge and skills to diagnose and treat patients. At the same time, they are in a position to strengthen knowledge, skills, and attitudes of other health care providers to translate evidence to practice.¹⁰ With increasing complexity of practice guidelines and prescribing rules, it has become even more important for doctors to design protocols and improve consistency of measuring these risk factors early for prescribing guideline-directed medical therapy. By changing workflow, these data can be gathered by nonmedical staff for quality improvement. This care reorganization will provide on-the-job training and align all stakeholders, including payors, patients, and providers to detect, treat, and control diabetes and CKD early.¹¹

Barriers and Gaps in Implementing Evidence-Based Diabetes Management in CKD

In this “knowledge-attitude-behavior” framework,¹² lack of agreement and complexity of guidelines were respectively considered by 91%¹³ and 61% of PCPs, as major barriers.¹⁴ Promoting partnerships among stakeholders, including professional bodies, patient advocacy groups, and patient representatives may help align expectations, incentives, and practice to improve adherence to treatment guidelines.⁹ Reform of undergraduate education and on-the-job training programs are crucial while a context-relevant health care financial system is needed to build competent workforce and ensure access to assessment, education, and treatment of diabetes and CKD.^{15,16}

According to the International Society of Nephrology Global Kidney Health Atlas, 64% of countries rated CKD awareness among PCPs to be low or below average or extremely low.¹⁷ In a systematic review of qualitative research on the barriers and/or enablers to detection and/or management of CKD in adults within primary health care,¹⁸ the most common barrier identified was a lack of time, followed by a fear of delivering a diagnosis of CKD, and dissatisfaction with CKD guidelines. Apart from time and resource constraints, the complexity of multiple guidelines produced by different organizations can, not unexpectedly, overwhelm primary care physicians from selecting the most appropriate guidelines for implementation. The most common enabler identified was the presence of supportive technology to identify and manage CKD, followed by the presence of a collaborative relationship among members of the health care team.¹⁷

Engage PCPs to Detect and Manage Diabetes and CKD Early

In well-developed health care systems, which adopt multidisciplinary care, PCPs are in a position to perform regular assessment of at-risk patients to diagnose CKD and prevent its progression. As the first contact point of patients, PCPs must be competent in detecting and managing CKD with timely referral to specialists for patients with complex and atypical presentations.¹⁹ Given the silent nature of diabetes and CKD, patient education is important to enhance patients’ willingness to undergo regular assessments, which are essential for implementation of practice guidelines.

Ensure Access to Adequate Coverage for Detection and Treatment

In low-resource settings, PCPs often lack access to laboratory services or guideline-directed medical therapy because of high costs, insufficient insurance coverage and reimbursement, uncoordinated care, and lack of incentives for quality improvement.^{20,21} The use of “numbers needed-to-treat” and short-term savings because of reduced hospitalizations may help payors prioritize their investments.²⁰ Targeted screening of patients with risk factors such as diabetes, hypertension, cardiovascular disease, family history of CKD, or age \geq 60 years will increase the cost-effectiveness of detection of CKD.²²⁻²⁵

Measure CKM Risk Factors to Change Disease Trajectory

Cardiometabolic risk factors (e.g., BP, HbA1c, lipids, and body weight) and microvascular complications,

notably kidney impairment (eGFR and UACR) and retinopathy (visual acuity and fundal changes) are silent. These risk factors and complications need to be detected, treated, and monitored to prevent their additive and causal impacts on cardiovascular-kidney disease.^{26,27} High level evidence from randomized controlled trials²⁸ have confirmed that multifactorial management aimed at improving HbA1c, BP, and lipids, as well as the persistent use of statin and RASi reduced progression to kidney failure in patients with early²⁹ or advanced CKD.³⁰

Random spot UACR and eGFR are the recommended screening methods for CKD. All laboratories should report both serum creatinine and eGFR values to facilitate decision-making.⁹ The frequent clustering of CKM risk factors, including BP, body weight, lipid, glycemic indexes, UACR, and eGFR should be measured in the same setting and annually as a package^{19,22,31,32} to evaluate their additive effects on complications.⁹ If laboratory UACR is not available, point-of-care UACR with reliable accuracy may be considered.²⁴ Spot urine protein measurement, either by laboratory or point-of-care (with quantification) methods, is the minimum annual screening test (Figure 1).⁹

Engage Nonphysician Health Care Workers With Medical Supervision

Guided by protocols with medical supervision, trained nurses can be tasked to educate patients; perform assessments; help titrate insulin dosage; and provide liaison between patients and doctors to improve the efficiency, quality, and value of collaborative care. Regular interdisciplinary team meetings will promulgate evidence-based medical practice with open dialogues.³³ On average, at least 4 hours of education is needed to help patients learn how to self-manage with more time needed for patients with complex problems.^{34,35}

Enhance Access to Strategies for Preventing CKD Progression

Complex practice guidelines, lack of training, resource constraints, insufficient skilled workers, and lack of financial incentives contribute to therapeutic inertia and low adherence to guidelines.^{22,36,37} Among the US Veteran Affairs health care facilities, in 2013 to 2014, only 47% and 66% patients with diabetes and CKD, respectively, received BP-lowering drugs and RASi.³⁸ In the US CURE-CKD Registry, in 2006 to 2017, only 7% of patients with CKD and diabetes or prediabetes were treated with RASi and 25% of those with

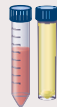
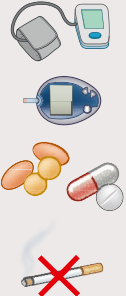
	Optimal	2nd line	3rd line	Minimum	Monitoring interval
Screening 	Spot UACR (laboratory)	Spot UACR (POC with quantifiable results)	Spot urine protein (laboratory)	Spot urine protein (POC with quantifiable results)	<ul style="list-style-type: none"> • At diagnosis of T2D and at least annually • To be routinely included in NCD programs
	Laboratory serum creatinine for estimating GFR				
Management^a 	Implement BAR-4S: <ol style="list-style-type: none"> Optimize BP control Optimize HbA_{1c} control (individualized) Initiate and optimize RAS inhibitor Initiate SGLT2 inhibitor (for eGFR ≥ 20 ml/min/1.73 m²) Initiate and optimize Statin therapy Initiate and optimize NS-MRA Stop Smoking 			Implement BARS: <ol style="list-style-type: none"> Optimize BP control Optimize HbA_{1c} control (individualized) Initiate and optimize RAS inhibitor Initiate SGLT2 inhibitor (for eGFR ≥ 20 ml/min/1.73 m²) 	To be initiated as soon as practicable if no absolute contraindications
	Potential for polypill (to promote patient adherence and reduce therapeutic inertia)				
	Dietary modifications and physical activity				

Figure 1. A concise action framework to enhance early detection of chronic kidney disease (CKD) in T2D in the primary care setting, with considerations given to availability and scalability of resources. A diagnosis of CKD can be made in the presence of either eGFR < 60 ml/min per 1.73 m² or albuminuria > 3 mg/mmol (or 30 mg/g) for at least 3 consecutive months.⁹ Management of CKD and type 2 diabetes is based on the KDIGO 2022 Clinical Practice Diabetes Guideline.⁹ BP, blood pressure; eGFR, estimated glomerular filtration rate; HbA_{1c}, glycated hemoglobin; KDIGO, Kidney Disease: Improving Global Outcomes; NCD, non-communicable disease; NS-MRA, nonsteroidal mineralocorticoid receptor antagonist; POC, point-of-care; RAS, renin-angiotensin system; SGLT2, sodium–glucose cotransporter-2; T2D, type 2 diabetes; UACR, urinary albumin-to-creatinine ratio.

coexistent hypertension.³⁹ The corresponding proportions for statin therapy were 17% and 42%,³⁹ with < 1% of patients being on SGLT2i.³⁹ In India, only 15% of patients with diabetes were treated with RASi,⁴⁰ albeit with considerable variations across settings and care providers.^{41,42}

A recent study indicated low treatment initiation and high discontinuation rates, respectively, of 17.8% and 56.0% for angiotensin-converting enzyme inhibitors or angiotensin receptor blockers, 1.3% and 66.0% for nonsteroidal mineralocorticoid receptor antagonists (ns-MRAs), 2.5% and 65.0% for SGLT2is, 3.7% and 66.8% for dipeptidyl-peptidase 4 inhibitors, 2.31% and 69.0% for glucagon-like peptide 1 receptor agonist (GLP-1 RAs), 4% and 75.7% for insulin, and 5.5% and 56.9% for sulfonylureas.⁴³ These real-world evidence highlight the importance of patient education on treatment persistence for silent diseases such as diabetes and CKD. In another study including 7199 patients with CKD and diabetes, 80.3% experienced care gap in SGLT2i prescription and 42.0%, in RASi prescription.⁴⁴

Among other reasons, the high costs of many recently developed organ-protective medications have rendered reduced access not only in low-and-middle income countries and low-income countries but also high-income countries. These financial barriers have made it even more urgent to perform regular structured assessments using simple tools to facilitate early control of multiple risk factors using conventional medications and patient empowerment. With care reorganization to facilitate regular review, it is possible to prevent silent progression and development of cardiovascular-kidney complications, which are expensive and difficult to treat.³

Implementation of KDIGO Practice Guidelines

The KDIGO staging and risk stratification by eGFR and UACR should be widely disseminated in different languages for risk communication.⁹ Control of BP and HbA_{1c} as well as use of RASi and SGLT2i (i.e., BARS) are paramount for organ protection.^{9,45} The use of ns-MRA, Statin therapy and Smoking cessation will confer additional benefits (BAR-4S) (Figures 1⁹ and 2²⁶). Following the summit, a landmark trial had been published showing the benefits of semaglutide, a GLP-1 RA, in patients with type 2 diabetes and CKD. Among the 3533 randomized patients (1767 in the semaglutide group and 1766 in the placebo group), semaglutide reduced the primary end point of major kidney events or death from kidney-related or cardiovascular causes by 23%,⁴⁶ providing an additional armamentarium in the management of diabetes in CKD.

The Kidney Protection Plan provides a guide to implement these recommendations, focusing on early

intervention, patient empowerment, and open communication (Figure 3).^{9,26,47-50} Local champions can design context-relevant care models to engage payors to scale the program, especially if these models are cost-effective.^{51,52} Other decision support tools include periodic prompts, computerized reminders, and personalized reports.⁵³⁻⁵⁵ In the primary care setting, the majority of patients do not have cardiovascular-kidney complications. In these patients, EARLY control of multiple risk factors using conventional glucose-, BP-, and lipid-lowering drugs, including metformin, RASi, and statins will translate to long-term organ protection. In overweight patients with suboptimal glycemic control, SGLT2i and GLP-1 RA can be used to further lower body weight and blood glucose while conferring independent organ-protective effects. In patients with established cardiovascular-kidney complications, SGLT2i and GLP-1 RA should be prioritized for organ protection with the use of other glucose-lowering drugs, including insulin, to achieve optimal glycemic control. In patients with optimal BP control treated with RASi who have residual albuminuria, ns-MRA should be considered for additional organ protection. In patients who are intolerant of RASi or SGLT2i, ns-MRA may be considered as an option. Currently, there are no clear guidelines on the sequence of introducing these organ-protective drugs, including SGLT2i, GLP-1 RA, and ns-MRA. The choices should be individualized based on the risk profiles of the patients and their control of blood glucose, BP, and albuminuria.²⁶

Develop 1-Stop Service Package for Quality Assurance, Risk Stratification, and Care Triage

To operationalize these recommendations, a 1-stop yearly package, including blood and urine tests can be provided with additional eye and feet assessment every 2 years. A territory-wide risk assessment and management program in Hong Kong which evolved from a research-driven quality improvement program since 1995 had the largest decline in annual diabetes-related death rate from 3% in 2000 to 1.3% in 2016.^{47,52} This 1-stop service enables regular assessments of risk factors and complications which frequently cluster, and allows the use of personalized data to empower patients for self-management. Databases from these structured assessments provide key performance indexes, including attainment of HbA_{1c}, BP, low-density lipoprotein cholesterol goals, number of treatment goals attained, proportions of patients with CKD and other complications, and use of organ-protective drugs. These benchmarking strategies, especially if adequately funded, have been proven to improve quality of care.^{52,56-58}

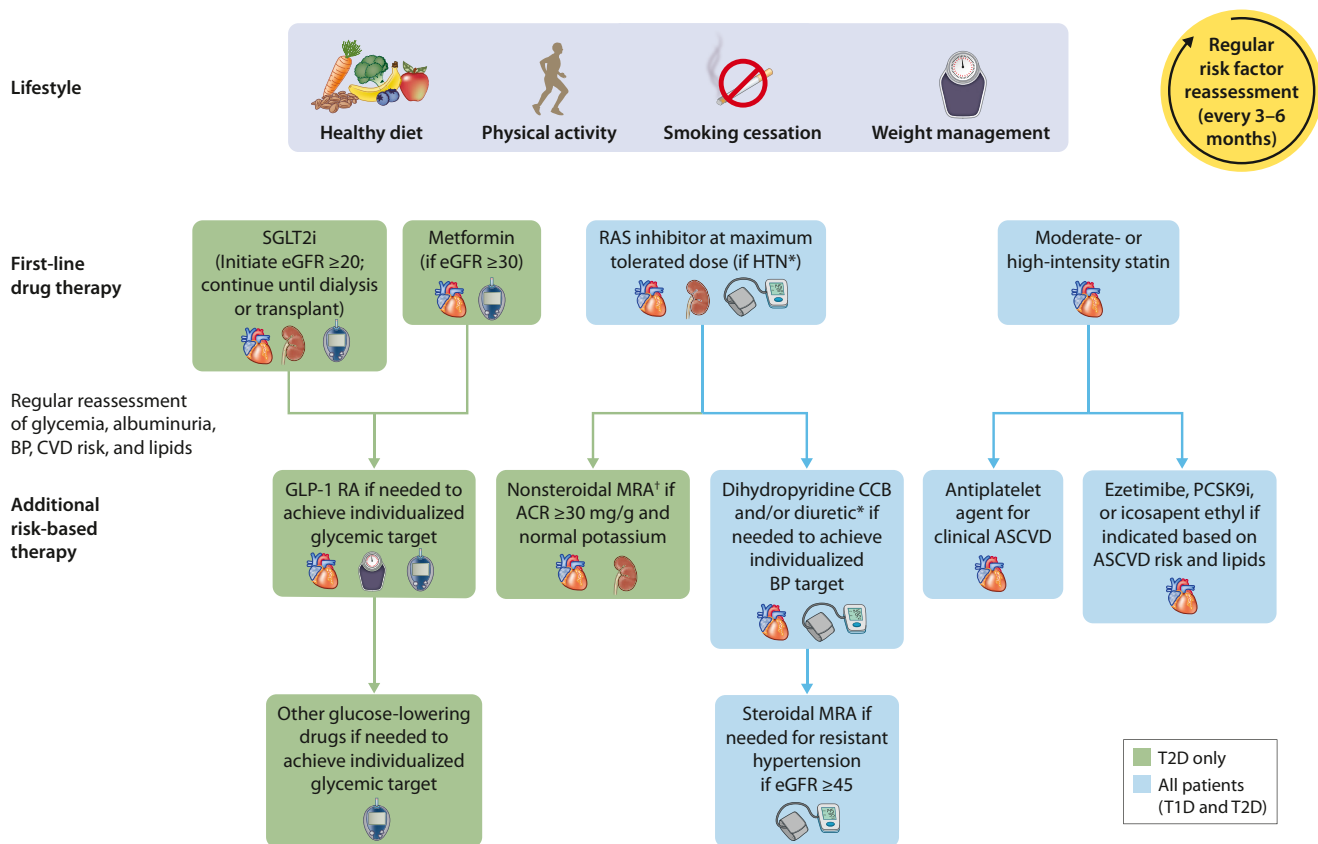


Figure 2. A joint consensus statement²⁶ by the American Diabetes Association and KDIGO on the medical treatment of patients with T2D in CKD in line with the proposed BARS or BAR-4S concepts (Figure 1). In patients with CKD defined by persistent eGFR < 60 ml/min per 1.73 m² or persistent uACR > 30 mg/g (or 3 mg/mmol) or evidence of kidney damage, metformin and SGLT2i are the preferred organ protective drugs and can be prescribed at eGFR 30 and 20 ml/min per 1.73 m² or higher, respectively for cardiovascular-kidney protections. GLP-1 RA can be considered as an additional risk-based therapy, especially in the presence of obesity and suboptimal control of glycemia. Patients with CKD should be protected by a RASi at the maximally tolerated dose* followed by ns-MRA if there is persistent uACR > 30 mg/g (or 3 mg/mmol) despite being on SGLT2i or RASi (provided eGFR > 20 ml/min per 1.73 m² with normal serum potassium level).[†] Finerenone is currently the only ns-MRA with proven clinical kidney and cardiovascular benefits. Given the heterogeneity of risk factors and treatment responses, treatment should be individualized to achieve the dual goals of optimal control of multiple risk factors (i.e., blood pressure, blood lipids, blood glucose, and obesity) and organ protection. Icons presented indicate the following benefits: blood pressure cuff = blood pressure-lowering; glucometer = glucose-lowering; heart = heart protection; kidney = kidney protection; scale = weight management. ASCVD, atherosclerotic cardiovascular disease; CCB, calcium channel blocker; CKD, chronic kidney disease; CVD, cardiovascular disease; eGFR, estimated glomerular filtration rate; GLP-1 RA, glucagon-like peptide-1 receptor agonist; HTN, hypertension; KDIGO, Kidney Disease: Improving Global Outcomes; ns-MRA, nonsteroidal mineralocorticoid receptor antagonist; PCSK9i, proprotein convertase subtilisin/kexin type 9 inhibitor; RASi, renin-angiotensin system inhibitor; SGLT2i, sodium-glucose cotransporter-2 inhibitor; T1D, type 1 diabetes; T2D, type 2 diabetes; uACR, urinary albumin-to-creatinine ratio.

This 1-stop multisystem assessment service with adequate reimbursement can be set up within a medical clinic run by family doctors or specialists or in a “standalone unit” run by trained nurses as part of an interdisciplinary network. These “service units” should be medically supervised with trained staff providing services, including teaching patients how to use continuous glucose monitoring devices, give injections, and perform self-monitoring of blood glucose. These service units facilitate on-the-job training for allied health workers in pursuit of interdisciplinary care.⁵⁹ Using Hong Kong as an example, with the full implementation of the territory-wide risk assessment

and management program, the use of RASi and/or statins in patients with diabetes has increased to 70% to 80% by 2019.⁶⁰ These real-world databases, especially if accompanied by a biobank, are powerful tools to identify unmet needs, verify clinical trial data and make discoveries in pursuit of precision medicine.⁶¹

Foster Collaborative Care With Data Transparency

Patients with diabetes and CKD encounter various health care providers. Driven by a common goal to maintain patients’ well-being, all relevant stakeholders should be aligned in terms of knowledge, attitudes, and skills with

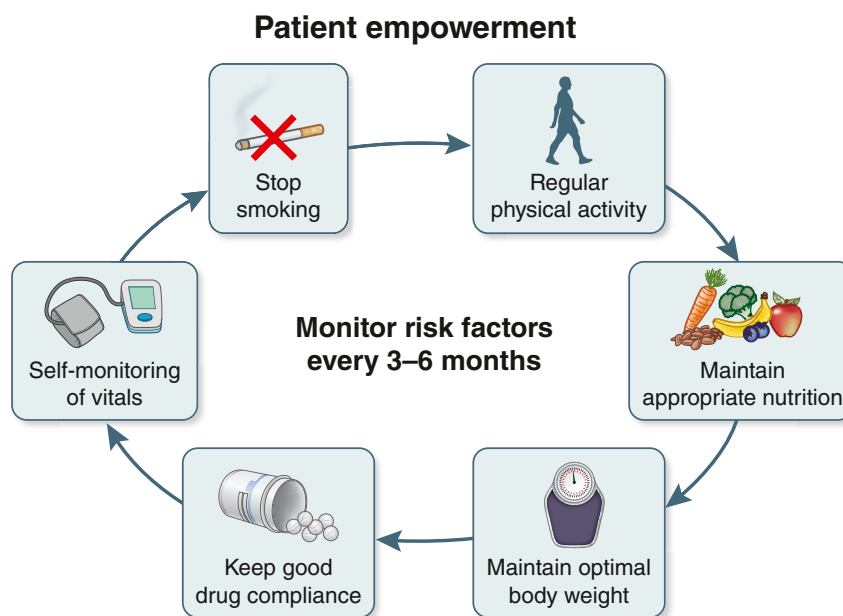
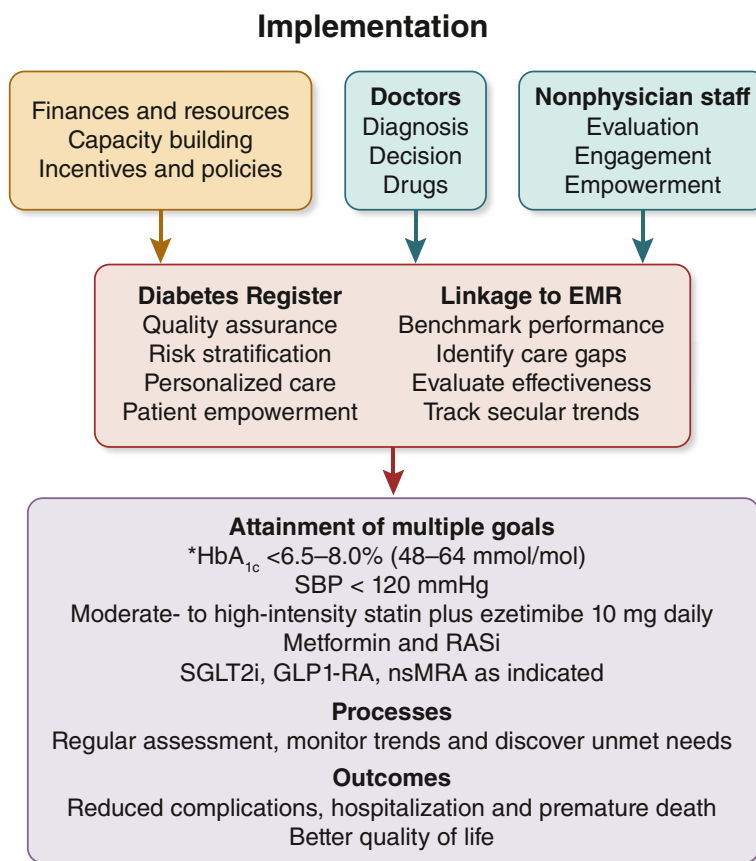


Figure 3. Implementation of data-driven Kidney Protection Plan (KPP) targeting the system, patients, and providers with the aim of providing regular structured assessment. A multidisciplinary approach with feedback to patients and providers for promoting early control of multiple risk factors (i.e., hyperglycemia, high blood pressure, dyslipidemia, and overweight), use of organ-protective drugs, and patient empowerment with ongoing data collection is proposed to align decision making by patients, providers, and payors. Guidance above was adapted from KDIGO 2022,⁹ de Boer *et al.*,²⁶ Chan *et al.*,⁴⁷ KDIGO 2021,⁴⁸ Baigent *et al.*,⁴⁹ Bi *et al.*⁵⁰ $\ast\text{HbA}_{1c}$ goal should be individualized taking into consideration age at diagnosis, expected disease duration, risk of hypoglycemia, comorbidities, frailty, life expectancy, cognitive function and social support. EMR, electronic medical record; GLP-1 RA, glucagon-like peptide-1 receptor agonist; HbA_{1c} , glycated hemoglobin; nsMRA, nonsteroidal mineralocorticoid receptor antagonist; RASi, renin-angiotensin system inhibitor; SBP, systolic blood pressure; SGLT2i, sodium-glucose cotransporter-2 inhibitor.

access to shared data for informed decision-making. This data transparency will empower patients and benchmark performance to ensure seamless care.⁶² The coordinator of multidisciplinary care is determined by local context.⁹ If the PCP is the care coordinator, they should stay abreast on the evolution of practice guidelines and develop a communication and referral mechanism to other disciplines, depending on the clinical need and competency in the primary care setting.⁶³

Use Technology to Facilitate Implementation of Data-Driven, Patient-Centered Care

Given the “numerical” nature of diabetes and CKD, digital health has particular relevance in the management of these conditions. This has become widely available because of the popularity of mobile phones and wearables, often referred to as mobile health. These digital interventions and mobile devices use information and communication technology to inform timely decision-making.⁶⁴ Before the popularity of these mobile devices, telephone calls⁶⁵ and short text messages⁶⁶ have been shown to prevent diabetes in individuals with prediabetes⁶⁶ or death in patients receiving multiple chronic medications.⁶⁵ Increasingly, applications are designed to incorporate algorithms from clinical data, including those from wearables (e.g., continuous glucose monitoring) to empower patients and providers.⁶⁴

However, given the heterogeneity, uncertainty, and diversity of clinical course, digital tools enable but cannot fully replace personalized health care.^{51,55} In some patients, digital intervention may enhance health literacy and increase physical activity.^{67,68} However, in patients with diabetes and complex needs, a hybrid model including in-person consultation as well as digital education and monitoring was superior in improving glycemia than digital care alone.⁶⁹

Use Information and Communication Technology to Facilitate Referral and Benchmarking

The numerical definitions of risk factors and treatment targets in diabetes and CKD can be used to generate algorithms with data visualization to promote shared decision-making, data tracking, and evaluation. Digitalizing care protocols for different stages of disease can streamline the division of labor among different specialties and care providers.^{52,70} For example, patients with diabetes and early CKD can be managed by PCPs, internists, or diabetologists, whereas patients with advanced CKD or heart failure can be managed by a multidisciplinary team (diabetologist, nephrologist, and cardiologist). Involvement of industry partners, payors, patient groups, and health economists can

facilitate open dialogues on reimbursement policy for value-based and patient-centered care.

The interoperability of different electronic medical record (EMR) systems with standardized coding will improve data transparency, communication, and coordination efficiency across disciplines. This will ensure accountability of prescriptions and clinical assessment practices, and avoid duplication or omission of medications and laboratory tests.⁷¹ These data-driven quality improvement programs based on evidence-based clinical care pathways with regular monitoring will promote the consistent delivery of high-quality care.^{47,72} Clear decision-making processes for care transitions between primary and secondary care are essential for seamless patient management.⁷³ A referral system embedded within the EMR system can increase the efficiency, communication, and responsiveness across health care providers.⁷⁴

In areas where EMR systems are less well-developed or where integration of data within the same or among different EMR systems are not feasible, the use of structured forms for data collection and design of databases using commercial programs such as Microsoft or other programming languages, for example, JAVA can be used to digitalize the data for storage, analysis, communication, and evaluation.^{52,75} In developing countries, philanthropies or seed funds can be used to set up sentinel sites to establish the workflow and build capacity including workforce, information technology system, and biobanks.⁷⁶ These multistakeholder efforts will help create powerful data to improve the classification and treatment of complex diseases such as diabetes and CKD with precision, value, and quality.⁷⁷

Use Processes and Indicators to Benchmark Successful Models of Care

The success of care models in patients with diabetes and CKD hinges on multiple interconnected factors (Table 1).⁷⁸ The documentation of patient demographic and risk profiles linked to process indicators and clinical outcomes, notably hospitalization data, serves as benchmarks of success.⁶¹ The process indicators include the efficiency of diagnosis of CKD, that is, measurement of UACR and eGFR, frequency of monitoring of CKM risk factors, frequency of visits to doctors and educators, persistent use of organ-protective drugs (e.g., metformin, RASi, SGLT2i, statin, ns-MRA, and GLP-1 RA) and self-management practice (e.g., self-monitoring of BP, body weight, blood glucose) (Table 2).⁷⁹⁻⁸⁴ Intermediate outcomes include control of BP, body weight, HbA1c, low-density lipoprotein cholesterol, eGFR, and UACR. These markers of disease progression are minimum measures in all regions, including low-resource

Table 1. Key messages for successful care models and recommendations

- Successful care models rely on ongoing data collection and analysis to document goal achievements and identify areas for improvement aimed at informing health care providers, planners, payors, policymakers, and patients to develop sustainable solutions.
- A key feature of a successful multidisciplinary care model is having access to an affordable or paid-for regular 1-stop multisystem risk assessment (eye, feet, blood, and urine) for quality assurance, with benchmarking of key performance indexes. The personalized data are used to stratify risk, empower self-management, promote patient-provider communication and ensure continuity of care.
- The 1-stop multisystem assessment allows detection of atypical features (e.g., severe albuminuria or rapid decline of eGFR; young age of diagnosis, especially with body leanness, rapid increase in HbA1c, features of endocrinopathies or severe complications despite short disease duration, strong family history of young-onset diabetes or CKD) for timely referral to specialists for detailed assessments.
- The provider-patient communication needs to be strengthened by promoting organizational health literacy and training health care workers to promote patients' health literacy and self-management (e.g., healthy diet; regular exercise; adequate sleep; stress management; smoking cessation; weight control; and regular self-monitoring of blood glucose, blood pressure, and body weight) with ongoing support.
- In countries where a primary care system has the necessary expertise and capacity, PCPs are able to coordinate the collaborative management of patients with diabetes and CKD, involving the appropriate specialists, when clinically indicated.
- In more sophisticated health care systems, data digitalization may add value to patient-centered, integrated, and multidisciplinary care.
- In remote or underserved areas, the use of trained nonmedical health care workers and point-of-care testing can improve access to a structured care protocol.
- Good record keeping accompanied by a database or register for evaluation will help policymakers and practitioners continue to improve the system toward expected standards.

CKD, chronic kidney disease; eGFR, estimated glomerular filtration rate; HbA1c, glycated hemoglobin; PCP, primary care physician.

settings. Whenever feasible, hospitalizations due to cardiovascular-renal-cancer events, hyperglycemic and hypoglycemic crisis and mortality should be captured to evaluate the impacts and cost-effectiveness of interventions and care strategies.^{85,86}

Health Literacy of Patients and Organizations and Patient-Reported Outcome Measures

In the Chronic Renal Insufficiency Cohort Study, health illiteracy was associated with a heightened risk for CKD progression and all-cause mortality.⁷⁹ The perspectives, values, and behavior of a patient may change during his/her journey of living with a chronic condition. These factors will influence the social, mental, and behavioral determinants of clinical outcomes.^{87,88} To understand these complex relationships, organizational health literacy with a work culture of promoting patient education, empowerment, and engagement is crucial (Table 2).⁸⁹

Patient-reported outcome measures (PROMS) such as Diabetes Distress Scale, Visual Analog Scale for pain assessment, EQ-5D index for quality of life, and Kidney Disease Quality of Life have been used although the choice of a disease-specific PROM or frequency of

PROMs collection are subjects of ongoing research. Practical issues such as burden on participants (e.g., time needed to comprehend and complete PROM questionnaire) and feasibility of incorporating PROMs into technology (e.g., linkage to EMR) during routine care are considerations.⁸⁵ The importance of these PROMs further supports the need to develop a 1-stop multisystem risk assessment and empowerment package by trained nonmedical personnel to maximize efficiency and create impacts.⁸⁹

Align Incentives of Care Providers, Policymakers and Payors to Promote Value-Based Care

Instead of focusing on treating life-threatening and advanced disease (save now and pay later), the paradigm should shift to adopting a proactive and preventive strategy (pay now and save later) to prevent the preventable.⁹⁰⁻⁹⁵ Patients with diabetes have 2- to 6-fold increased risk of hospitalizations due to traditional (e.g., cardiovascular-kidney or cancer events) and nontraditional causes (e.g., infections, liver diseases, and mental illnesses).⁹⁶ An economic model that confirms the money- and life-saving impacts of early guideline-directed care by reducing hospitalizations and societal costs (loss of productivity and poor quality of life), should incentivize payors to pay for, providers to deliver, and patients to adhere to quality and value-based care.

In low-and-middle income countries, policymakers should focus on clinical outcomes and social returns on investments, including productivity gains and community well-being. Team-based structured care with regular assessment, patient education, and early attainment of multiple targets will prevent organ damage and premature death.^{29,30,97,98} This is especially relevant to low-and-middle income countries with limited resources to treat advanced diseases.⁹⁹ These emerging economies can take reference from primary, specialist, and collaborative care models in advanced economies, which provide both acute episodic care and quality chronic care.¹⁰⁰⁻¹⁰²

The burden of diabetes and CKD is now recognized by global agencies including the World Health Organization, which has held the government accountable for ensuring access to medications and monitoring tools to prevent and properly manage diabetes and non-communicable diseases such as CKD. Nevertheless, the challenges lie in the adherence of guideline-directed care in which care providers must contextualize the guidance for local practice with the goal to facilitate ongoing evaluation and informed decision-making at all levels, including patients, providers, and payors.^{3,5}

Table 2. Definition and various attributes of health literacy in the care of people with diabetes and CKD

Health literacy types	Definition	Attributes	Relevance and application in low- and middle-income countries
Personal health literacy	<ul style="list-style-type: none"> The degree to which individuals have the ability to find, understand, and use information and services to inform health-related decisions and actions for themselves and others. 	<ul style="list-style-type: none"> The ability to use health information rather than just understanding it. The ability to make “well-informed” decisions rather than “appropriate” ones. 	<ul style="list-style-type: none"> Recognize the significant effect of social determinants on health disparities and CKD outcomes.^{79,80}
Organizational health literacy ⁸¹	<ul style="list-style-type: none"> The capacity to which organizations equitably enable individuals to navigate, understand, and use information and services to inform health-related decisions and actions for themselves and others. 	<ul style="list-style-type: none"> Identify gaps in effective delivery of health information that is easy to understand and act on. 	<ul style="list-style-type: none"> Design and distribute print, audiovisual, and social media content according to local, social, cultural context.
Distributed health literacy ⁸²	<ul style="list-style-type: none"> Health literacy abilities, skills and practices of others that contribute to an individual’s level of health literacy. 	<ul style="list-style-type: none"> Explore and enhance support system for patients (especially those with low personal health literacy) such as family, friends, neighbors, peer supporters, and community groups. Compensate for low individual health literacy skills by drawing on people within their social network(s) and in their cultural contexts. 	<ul style="list-style-type: none"> Encourage patients to bring their “health literacy mediators” (such as household members, close social network) to the clinic to reinforce the message of self-management.⁸³ Prioritize resources to enable community or peer support group for patients with low individual health literacy and relatively limited contact time with health care workers.
Digital health literacy ⁸⁴	<ul style="list-style-type: none"> The skills and ability to use information and communication technologies to find, evaluate, create, and communicate information for health. 	<ul style="list-style-type: none"> Functional: the ability to successfully read and write about health using technological devices. Communicative: the ability to control, adapt, and collaborate through communication about health with others in online social environments. Critical: the ability to evaluate the relevance, trustworthiness, and risks of sharing and receiving health-related information through the digital ecosystem (such as the Internet and ChatGPT). Translational: the ability to apply health-related information from the digital ecosystem in different contexts. 	<ul style="list-style-type: none"> Explore the benefits of digital health intervention in vulnerable groups such as patients residing in remote areas. Allocate resources to enhance access to digital technology. Education to equip patients with knowledge to verify source and reliability of health information on digital platform.

CKD, chronic kidney disease.

Conclusion

More than 3 decades of innovative research and best practices have confirmed that diabetes and CKD can be prevented, managed, and controlled; yet, considerable care gaps persist. On average, 17 years is needed to translate research into practice and policies in health care.⁷ To this end, patients, providers, and payors need to be incentivized to deliver data-driven, value-based care. This care transformation is a matter of urgency against a backdrop of aging and ecological transition, and changing lifestyles accompanied by a rising trend of young-onset obesity and diabetes. These young individuals are at high risk of developing CKD while still being economically productive.^{96,103,104} However, these challenges can be turned into opportunities to make a real difference. Through systematic data collection to better engage patients, promote interdisciplinary care, and provide quality assurance to benefit the patient and society, we envision that this 1-stop multisystem assessment package will narrow the care gap through effective implementation of evidence-based practice guideline with precision, affordability, and value.

DISCLOSURE

PKTL is the President of the International Association of Chinese Nephrologists and President of Hong Kong Academy of Medicine. LLL discloses receipt of grant support with funds to their institution from Abbott, AstraZeneca and Novartis; speaker honoraria from Abbott, AstraZeneca, Boehringer Ingelheim, Novo Nordisk and ZP Therapeutics; and leadership or fiduciary role in Diabetes Malaysia and Malaysian Endocrine and Metabolic Society. AOYL discloses receipt of grant support from Amgen, AstraZeneca, Bayer, Biogen, Boehringer Ingelheim, Eli Lilly, Junshi, Lee Pharmaceutical, MSD, Novo Nordisk, Roche, Sanofi, Shanghai Junshi Biosciences, Sugardown and Takeda; speaker honoraria and travel support from AstraZeneca, Boehringer Ingelheim, Eli Lilly, MSD and Novo Nordisk. JAMN discloses receipt of travel support from AstraZeneca. SS discloses receipt of grant support from AstraZeneca, Boehringer Ingelheim, Novo Nordisk, Sanofi, and Servier; speaker honoraria from Abbott, Amgen, AstraZeneca, Boehringer Ingelheim, Janssen, Lilly, Menarini, MSD, Novartis, Novo Nordisk, and Sanofi;

travel support from Abbott, AstraZeneca, and Menarini; and is a member of data safety monitoring board or advisory board for Abbott, AstraZeneca, Boehringer Ingelheim, Lilly, and Novo Nordisk. AL discloses receipt of consulting fees from Alexion, Alnylam, AstraZeneca, Baxter Healthcare, Bayer, Biocryst, Boehringer Ingelheim, Chinook, Dimerix, Eledon, George Clinical, GSK, Kira, Otsuka, ProKidney, Vera, and Zai Lab; speaker honoraria from AstraZeneca, Baxter Healthcare, Boehringer Ingelheim, Chinook, and Otsuka; and is a member of data safety monitoring board for Dimerix and Zai Lab; AL is also a member of ISPD Executive Committee and Honorary Secretary; deputy chair of ISN CME Committee; ISN Dialysis Working Group member, and a KDIGO Executive Committee member. AL also serves on journal editorial boards of *Kidney International*, *Kidney and Blood Pressure Research*, *Nephrology*, *Peritoneal Dialysis International*, and *Kidney Research and Clinical Practice*. PL discloses receipt of speaker honoraria from AstraZeneca, Bayer, Boehringer Ingelheim, and Janssen. KU discloses receipt of speaker honoraria from Abbott, Bayer, Eli Lilly, Novo Nordisk, Ono Pharmaceutical, Sumitomo Pharma, and Taisho Pharmaceutical. KU also discloses leadership or fiduciary role in the Japan Diabetes Society. MCSW discloses serving as an honorary advisor to Geniebiome Ltd and honorary consultant to BGI Health; discloses serving as an Advisory Committee member to Pfizer, as an external expert to GSK Limited, and serving on the Advisory Board to AstraZeneca. SZ discloses receipt of grant support with funds to the institution from the Australian Government Department of Health and Aged Care, JDRF Centre of Excellence, and National Health and Medical Research (Australia); consulting fees to the institution from AstraZeneca, Boehringer Ingelheim, CSL Seqirus, Eli Lilly Australia, Moderna, Novo Nordisk, and Sanofi; and is Board director for the Australian Clinical Trials Alliance and Victorian Institute of Forensic Medicine. KML discloses serving as the President of Association of Hong Kong Diabetes Nurses and attended a conference sponsored by Roche Diagnostics (HK). VHFH is a Past-President of the Hong Kong Society of Endocrinology, Metabolism and Reproduction (2022-2024). JKCN discloses receipt of speaker honoraria from AstraZeneca Hong Kong, Bayer, and Boehringer Ingelheim. SCWT discloses receipt of consulting fees from Boehringer Ingelheim, Novartis and Travere; speaker honoraria from AstraZeneca, Bayer, Boehringer Ingelheim, GSK, Novartis, and Vantive; and is a Past-President of Asian Pacific Society of Nephrology (2022-2024), a past KDIGO Executive Committee member (2020-2023), and CME Committee Chair, ISN (2022-2024). JCNC discloses receipt of grant support (through institutions) and/or consulting fees or speaker honoraria from Applied Therapeutics, AstraZeneca,

Bayer, Boehringer Ingelheim, Celltrion, Eli Lilly, Hua Medicine, Merck, MSD, Novo Nordisk, Pfizer, Powder Pharmaceuticals, Roche, Sanofi, Servier, Viatrix, and Zuellig Therapeutics; she is the Chief Executive Officer (*pro bono*) of the Asia Diabetes Foundation that developed the web-based JADE platform for implementation of data-driven diabetes care; she is a coinventor of patents on biomarkers and models for predicting diabetes and its complications that are owned by the Chinese University of Hong Kong; she is the cofounder of GemVCare, a technology company, with partial support from the Hong Kong Government Innovation and Technology Commission Technology Start-up Support Scheme for Universities, which uses biogenetic markers and information technology to implement precision diabetes care and prevention through partnerships. All the other authors declared no competing interests.

ACKNOWLEDGMENTS

The conference was sponsored by KDIGO and supported in part by AstraZeneca, Boehringer Ingelheim and Lilly. Travel support to conference participants was provided by KDIGO.

KDIGO also expresses thanks to the following groups for their organizational and logistical support: International Association of Chinese Nephrologists, Asia Diabetes Foundation, The Hong Kong College of Family Physicians, Prince of Wales Hospital, The Chinese University of Hong Kong (CUHK), Hong Kong Institute of Diabetes and Obesity, CUHK Carol and Richard Yu PD Research Centre, Hong Kong Society of Nephrology, Hong Kong Society of Endocrinology, Metabolism and Reproduction, Hong Kong Association of Renal Nurses (HKARN) and Association of Hong Kong Diabetes Nurses.

REFERENCES

1. Gheith O, Farouk N, Nampoory N, Halim MA, Al-Otaibi T. Diabetic kidney disease: world wide difference of prevalence and risk factors. *J Nephropharmacol*. 2016;5:49–56.
2. Afkarian M, Zelnick LR, Hall YN, et al. Clinical manifestations of kidney disease among US adults with diabetes, 1988–2014. *JAMA*. 2016;316:602–610. <https://doi.org/10.1001/jama.2016.10924>
3. Chan JCN, Lim LL, Wareham NJ, et al. The Lancet Commission on diabetes: using data to transform diabetes care and patient lives. *Lancet*. 2021;396:2019–2082. [https://doi.org/10.1016/S0140-6736\(20\)32374-6](https://doi.org/10.1016/S0140-6736(20)32374-6)
4. Beran D, Besancon S, Ewen M, et al. Diabetes and the WHO model list of essential medicines. *Lancet Diabetes Endocrinol*. 2022;10:17–18. [https://doi.org/10.1016/S2213-8587\(21\)00323-5](https://doi.org/10.1016/S2213-8587(21)00323-5)
5. Gregg EW, Buckley J, Ali MK, et al. Improving health outcomes of people with diabetes: target setting for the WHO Global Diabetes Compact. *Lancet*. 2023;401:1302–1312. [https://doi.org/10.1016/S0140-6736\(23\)00001-6](https://doi.org/10.1016/S0140-6736(23)00001-6)

6. World Health Organization Model List of Essential Medicines – 22nd List. World Health Organization; 2021. Accessed June 9, 2025. <https://iris.who.int/bitstream/handle/10665/345533/WHO-MHP-HPS-EML-2021.02eng.pdf?sequence=1>
7. Morris ZS, Wooding S, Grant J. The answer is 17 years, what is the question: understanding time lags in translational research. *J R Soc Med*. 2011;104:510–520. <https://doi.org/10.1258/jrsm.2011.110180>
8. Owolabi MO, Yaria JO, Daivadanam M, et al. Gaps in guidelines for the management of diabetes in low- and middle-income versus high-income countries-A systematic review. *Diabetes Care*. 2018;41:1097–1105. <https://doi.org/10.2337/dc17-1795>
9. Kidney Disease: Improving Global Outcomes (KDIGO) Diabetes Work Group. KDIGO 2022 Clinical Practice Guideline for Diabetes Management in Chronic Kidney Disease. *Kidney Int*. 2022;102:S1–S127. <https://doi.org/10.1016/j.kint.2022.06.008>
10. Cabana MD, Rand CS, Powe NR, et al. Why don't physicians follow clinical practice guidelines? A framework for improvement. *JAMA*. 1999;282:1458–1465. <https://doi.org/10.1001/jama.282.15.1458>
11. de Boer IH, Caramori ML, Chan JCN, et al. Executive summary of the 2020 KDIGO diabetes management in CKD Guideline: evidence-based advances in monitoring and treatment. *Kidney Int*. 2020;98:839–848. <https://doi.org/10.1016/j.kint.2020.06.024>
12. Fischer F, Lange K, Klose K, Greiner W, Kraemer A. Barriers and strategies in guideline implementation-A scoping Review]. *Healthcare (Basel)*. 2016;4:36. <https://doi.org/10.3390/healthcare4030036>
13. Zucker AR, Meadow WL. Pediatric critical care physicians' attitudes about guidelines for the use of ribavirin in critically ill children with respiratory syncytial virus pneumonia. *Crit Care Med*. 1995;23:767–772. <https://doi.org/10.1097/00003246-199504000-00028>
14. Qumseya B, Goddard A, Qumseya A, Estores D, Draganov PV, Forsmark C. Barriers to clinical practice guideline implementation among physicians: a physician survey. *Int J Gen Med*. 2021;14:7591–7598. <https://doi.org/10.2147/IJGM.S333501>
15. Goodwin N. Understanding integrated care: a complex process, a fundamental principle. *Int J Integr Care*. 2013;13:e011. <https://doi.org/10.5334/ijic.1144>
16. Montenegro H, Holder R, Ramagem C, et al. Combating health care fragmentation through integrated health service delivery networks in the Americas: lessons learned. *J Integr Care*. 2011;19:5–16. <https://doi.org/10.1108/1476901111176707>
17. Global Kidney Health Atlas: A Report by the International Society of Nephrology on the Current State of Organization and Structures for Kidney Care Across the Globe. International Society of Nephrology; 2017. Accessed June 9, 2025. https://www.theisn.org/wp-content/uploads/media/ISN%20Atlas_2023%20Digital.pdf
18. Neale EP, Middleton J, Lambert K. Barriers and enablers to detection and management of chronic kidney disease in primary healthcare: a systematic review. *BMC Nephrol*. 2020;21:83. <https://doi.org/10.1186/s12882-020-01731-x>
19. Kong AP, Li PK. The underrecognized role of primary care physicians in the prevention and management of chronic kidney disease. *Prim Care Diabetes*. 2023;17:1–2. <https://doi.org/10.1016/j.pcd.2023.01.006>
20. Jha V, Arici M, Collins AJ, et al. Understanding kidney care needs and implementation strategies in low- and middle-income countries: conclusions from a “Kidney Disease: Improving Global Outcomes” (KDIGO) Controversies Conference. *Kidney Int*. 2016;90:1164–1174. <https://doi.org/10.1016/j.kint.2016.09.009>
21. Wilson ML, Fleming KA, Kuti MA, Looi LM, Lago N, Ru K. Access to pathology and laboratory medicine services: a crucial gap. *Lancet*. 2018;391:1927–1938. [https://doi.org/10.1016/S0140-6736\(18\)30458-6](https://doi.org/10.1016/S0140-6736(18)30458-6)
22. George C, Echouffo-Tcheugui JB, Jaar BG, Okpechi IG, Kengne AP. The need for screening, early diagnosis, and prediction of chronic kidney disease in people with diabetes in low- and middle-income countries-a review of the current literature. *BMC Med*. 2022;20:247. <https://doi.org/10.1186/s12916-022-02438-6>
23. Tonelli M, Dickinson JA. Early detection of CKD: implications for low-income, middle-income, and high-income countries. *J Am Soc Nephrol*. 2020;31:1931–1940. <https://doi.org/10.1681/ASN.2020030277>
24. Levin A, Tonelli M, Bonventre J, et al. Global kidney health 2017 and beyond: a roadmap for closing gaps in care, research, and policy. *Lancet*. 2017;390:1888–1917. [https://doi.org/10.1016/S0140-6736\(17\)30788-2](https://doi.org/10.1016/S0140-6736(17)30788-2)
25. Li PK, Chow KM, Matsuo S, et al. Asian chronic kidney disease best practice recommendations: positional statements for early detection of chronic kidney disease from Asian Forum for Chronic Kidney Disease Initiatives (AFCKDI). *Nephrology (Carlton)*. 2011;16:633–641. <https://doi.org/10.1111/j.1440-1797.2011.01503.x>
26. de Boer IH, Khunti K, Sadosky T, et al. Diabetes management in chronic kidney disease: A consensus report by the American Diabetes Association (ADA) and kidney disease: improving global outcomes (KDIGO). *Diabetes Care*. 2022;45:3075–3090. <https://doi.org/10.2337/dci22-0027>
27. American Diabetes Association. Standards of care in diabetes - 2023. *Diabetes Care*. 2022;46:S1–S291. <https://doi.org/10.2337/dc23-S002>
28. Sasako T, Yamauchi T, Ueki K. Intensified multifactorial intervention in patients with type 2 diabetes mellitus. *Diabetes Metab J*. 2023;47:185–197. <https://doi.org/10.4093/dmj.2022.0325>
29. Oellgaard J, Gaede P, Rossing P, Persson F, Parving HH, Pedersen O. Intensified multifactorial intervention in type 2 diabetics with microalbuminuria leads to long-term renal benefits. *Kidney Int*. 2017;91:982–988. <https://doi.org/10.1016/j.kint.2016.11.023>
30. Chan JC, So WY, Yeung CY, et al. Effects of structured versus usual care on renal endpoint in type 2 diabetes: the SURE study: a randomized multicenter translational study. *Diabetes Care*. 2009;32:977–982. <https://doi.org/10.2337/dc08-1908>
31. International Diabetes Federation. IDF Diabetes Atlas, 10th ed. International Diabetes Federation; 2021. Accessed June 9, 2025. <https://diabetesatlas.org/>
32. Davidson JA. The increasing role of primary care physicians in caring for patients with type 2 diabetes mellitus. *Mayo*

- Clin Proc.* 2010;85(suppl):S3–S4. <https://doi.org/10.4065/mcp.2010.0466>
33. McGill M, Blonde L, Chan JCN, et al. The interdisciplinary team in type 2 diabetes management: challenges and best practice solutions from real-world scenarios. *J Clin Transl Endocrinol.* 2017;7:21–27. <https://doi.org/10.1016/j.jcte.2016.12.001>
 34. Narva AS, Norton JM, Boulware LE. Educating patients about CKD: the path to self-management and patient-centered care. *Clin J Am Soc Nephrol.* 2016;11:694–703. <https://doi.org/10.2215/CJN.07680715>
 35. Shubrook JH, Brannan GD, Wapner A, Klein G, Schwartz FL. Time needed for diabetes self-care: nationwide survey of certified diabetes educators. *Diabetes Spectr.* 2018;31:267–271. <https://doi.org/10.2337/ds17-0077>
 36. Lunney M, Alruhaimi M, Ashuntantang GE, et al. [Guidelines]. Guidelines, policies, and barriers to kidney care: findings from a global survey. *Kidney Int Suppl (2011).* 2018;8:30–40. <https://doi.org/10.1016/j.kisu.2017.10.007>
 37. Sever MS, Jager KJ, Vanholder R, et al. A roadmap for optimizing chronic kidney disease patient care and patient-oriented research in the Eastern European nephrology community. *Clin Kidney J.* 2021;14:23–35. <https://doi.org/10.1093/ckj/sfaa218>
 38. Navaneethan SD, Akeroyd JM, Ramsey D, et al. Facility-level variations in kidney disease care among veterans with diabetes and CKD. *Clin J Am Soc Nephrol.* 2018;13:1842–1850. <https://doi.org/10.2215/CJN.03830318>
 39. Tuttle KR, Alicic RZ, Duru OK, et al. Clinical characteristics of and risk factors for chronic kidney disease among adults and children: an analysis of the CURE-CKD registry. *JAMA Netw Open.* 2019;2:e1918169. <https://doi.org/10.1001/jama-networkopen.2019.18169>
 40. Anjana RM, Unnikrishnan R, Deepa M, et al. Achievement of guideline recommended diabetes treatment targets and health habits in people with self-reported diabetes in India (ICMR-INDIAB-13): a national cross-sectional study. *Lancet Diabetes Endocrinol.* 2022;10:430–441. [https://doi.org/10.1016/S2213-8587\(22\)00072-9](https://doi.org/10.1016/S2213-8587(22)00072-9)
 41. Luk AO, Li X, Zhang Y, et al. Quality of care in patients with diabetic kidney disease in Asia: the Joint Asia diabetes evaluation (JADE) registry. *Diabet Med.* 2016;33:1230–1239. <https://doi.org/10.1111/dme.13014>
 42. Mbanya JC, Aschner P, Gagliardino JJ, et al. Screening, prevalence, treatment and control of kidney disease in patients with type 1 and type 2 diabetes in low-to-middle-income countries (2005–2017): the international diabetes management practices study (IDMPS). *Diabetologia.* 2021;64:1246–1255. <https://doi.org/10.1007/s00125-021-05406-6>
 43. Fried L, Schmedt N, Folkerts K, et al. High unmet treatment needs in patients with chronic kidney disease and type 2 diabetes: real-world evidence from a US claims database. *Nephrol Dial Transplant.* 2023;38:630–643. <https://doi.org/10.1093/ndt/gfac140>
 44. Rikin S, Deccy S, Zhang C, Crandall J, Deng Y, Golestaneh L. Care gaps in sodium-glucose Cotransporter-2 inhibitor and renin angiotensin system inhibitor prescriptions for patients with diabetic kidney disease. *J Gen Intern Med.* 2023;38:1599–1605. <https://doi.org/10.1007/s11606-022-07863-0>
 45. Lim LL, Chow E, Chan JCN. Cardiorenal diseases in type 2 diabetes mellitus: clinical trials and real-world practice. *Nat Rev Endocrinol.* 2023;19:151–163. <https://doi.org/10.1038/s41574-022-00776-2>
 46. Perkovic V, Tuttle KR, Rossing P, et al. Effects of semaglutide on chronic kidney disease in patients with type 2 diabetes. *N Engl J Med.* 2024;391:109–121. <https://doi.org/10.1056/NEJMoa2403347>
 47. Chan JCN, Lim LL, Luk AOY, et al. From Hong Kong diabetes register to JADE program to RAMP-DM for data-driven actions. *Diabetes Care.* 2019;42:2022–2031. <https://doi.org/10.2337/dci19-0003>
 48. Kidney Disease: Improving Global Outcomes (KDIGO) Blood Pressure Work Group. KDIGO 2021 clinical practice guideline for the management of blood pressure in chronic kidney disease. *Kidney Int.* 2021;99:S1–S87. <https://doi.org/10.1016/j.kint.2020.11.003>
 49. Baigent C, Landray MJ, Reith C, et al. The effects of lowering LDL cholesterol with simvastatin plus ezetimibe in patients with chronic kidney disease (Study of Heart and Renal Protection): a randomised placebo-controlled trial. *Lancet.* 2011;377:2181–2192. [https://doi.org/10.1016/S0140-6736\(11\)60739-3](https://doi.org/10.1016/S0140-6736(11)60739-3)
 50. Bi Y, Li M, Liu Y, et al. Intensive blood-pressure control in patients with type 2 diabetes. *N Engl J Med.* 2025;392:1155–1167. <https://doi.org/10.1056/NEJMoa2412006>
 51. Lim LL, Lau ESH, Ozaki R, et al. Association of technologically assisted integrated care with clinical outcomes in type 2 diabetes in Hong Kong using the prospective JADE Program: a retrospective cohort analysis. *PLOS Med.* 2020;17:e1003367. <https://doi.org/10.1371/journal.pmed.1003367>
 52. Chan JCN, Cheung M, Luk AOY, et al. A 30-year case study of local implementation of global guidelines for data-driven diabetes management starting with the Hong Kong Diabetes Register. *Lancet Reg Health West Pac.* 2025;56:101505. <https://doi.org/10.1016/j.lanwpc.2025.101505>
 53. Shi X, He J, Lin M, et al. Comparative effectiveness of team-based care with and without a clinical decision support system for diabetes management: a cluster randomized trial. *Ann Intern Med.* 2023;176:49–58. <https://doi.org/10.7326/M22-1950>
 54. Zhang X, Yip TC, Wong GL, et al. Clinical care pathway to detect advanced liver disease in patients with type 2 diabetes through automated fibrosis score calculation and electronic reminder messages: a randomised controlled trial. *Gut.* 2023;72:2364–2371. <https://doi.org/10.1136/gutjnl-2023-330269>
 55. Chan JCN, Thewjitcharoen Y, Nguyen TK, et al. Effect of a web-based management guide on risk factors in patients with type 2 diabetes and diabetic kidney disease: a JADE randomized clinical trial. *JAMA Netw Open.* 2022;5:e223862. <https://doi.org/10.1001/jamanetworkopen.2022.3862>
 56. Chen TT, Oldenburg B, Hsueh YS. Chronic care model in the diabetes pay-for-performance program in Taiwan: benefits, challenges and future directions. *World J Diabetes.* 2021;12:578–589. <https://doi.org/10.4239/wjcd.v12.i5.578>
 57. Hermans MP, Elisaf M, Michel G, et al. Benchmarking is associated with improved quality of care in type 2 diabetes: the OPTIMISE randomized, controlled trial. *Diabetes Care.* 2013;36:3388–3395. <https://doi.org/10.2337/dc12-1853>

58. Willmington C, Belardi P, Murante AM, Vainieri M. The contribution of benchmarking to quality improvement in healthcare. A systematic literature review. *BMC Health Serv Res*. 2022;22:139. <https://doi.org/10.1186/s12913-022-07467-8>
59. Chan JC, Sui Y, Oldenburg B, et al. Effects of telephone-based peer support in patients with type 2 diabetes mellitus receiving integrated care: a randomized clinical trial. *JAMA Intern Med*. 2014;174:972–981. <https://doi.org/10.1001/jamainternmed.2014.655>
60. Cheung JTK, Yang A, Wu H, et al. Initiation of sodium-glucose cotransporter-2 inhibitors at lower HbA1c threshold attenuates eGFR decline in type 2 diabetes patients with and without cardiorenal disease: a propensity-matched cohort study. *Diabetes Res Clin Pract*. 2023;195:110203. <https://doi.org/10.1016/j.diabres.2022.110203>
61. Tricco AC, Ivers NM, Grimshaw JM, et al. Effectiveness of quality improvement strategies on the management of diabetes: a systematic review and meta-analysis. *Lancet*. 2012;379:2252–2261. [https://doi.org/10.1016/S0140-6736\(12\)60480-2](https://doi.org/10.1016/S0140-6736(12)60480-2)
62. Rawlinson C, Carron T, Cohidon C, et al. An overview of reviews on interprofessional collaboration in primary care: barriers and facilitators. *Int J Integr Care*. 2021;21:32. <https://doi.org/10.5334/ijic.5589>
63. Navaneethan SD, Aloudat S, Singh S. A systematic review of patient and health system characteristics associated with late referral in chronic kidney disease. *BMC Nephrol*. 2008;9:3. <https://doi.org/10.1186/1471-2369-9-3>
64. Istepanian RSH. Mobile health (m-health) in retrospect: the known unknowns. *Int J Environ Res Public Health*. 2022;19:3747. <https://doi.org/10.3390/ijerph19073747>
65. Wu JY, Leung WY, Chang S, et al. Effectiveness of telephone counselling by a pharmacist in reducing mortality in patients receiving polypharmacy: randomised controlled trial. *BMJ*. 2006;333:522. <https://doi.org/10.1136/bmj.38905.447118.2F>
66. Ramachandran A, Snehalatha C, Ram J, et al. Effectiveness of mobile phone messaging in prevention of type 2 diabetes by lifestyle modification in men in India: a prospective, parallel-group, randomised controlled trial. *Lancet Diabetes Endocrinol*. 2013;1:191–198. [https://doi.org/10.1016/S2213-8587\(13\)70067-6](https://doi.org/10.1016/S2213-8587(13)70067-6)
67. Verweel L, Newman A, Michaelchuk W, Packham T, Goldstein R, Brooks D. The effect of digital interventions on related health literacy and skills for individuals living with chronic diseases: a systematic review and meta-analysis. *Int J Med Inform*. 2023;177:105114. <https://doi.org/10.1016/j.ijmedinf.2023.105114>
68. Zangger G, Bricca A, Liaghat B, et al. Benefits and harms of digital health interventions promoting physical activity in people with chronic conditions: systematic review and meta-analysis. *J Med Internet Res*. 2023;25:e46439. <https://doi.org/10.2196/46439>
69. Zupa MF, Vimalananda VG, Rothenberger SD, et al. Patterns of telemedicine use and glycemic outcomes of endocrinology care for patients with type 2 diabetes. *JAMA Netw Open*. 2023;6:e2346305. <https://doi.org/10.1001/jamanetworkopen.2023.46305>
70. Fraser SD, Blakeman T. Chronic kidney disease: identification and management in primary care. *Pragmat Obs Res*. 2016;7:21–32. <https://doi.org/10.2147/POR.S97310>
71. Pai MM, Ganiga R, Pai RM, Sinha RK. Standard electronic health record (EHR) framework for Indian healthcare system. *Health Serv Outcomes Res Methodol*. 2021;21:339–362. <https://doi.org/10.1007/s10742-020-00238-0>
72. National Institute for Health and Care Excellence. Type 2 Diabetes in Adults Quality Standard: National Institute for Health and Care Excellence; 2023. Updated March 2, 2023. Accessed July 13, 2025. <http://www.nice.org.uk/guidance/qs209>
73. World Health Organization. Continuity and Coordination of Care: a Practice Brief to Support Implementation of the WHO Framework on Integrated People-Centered Health Services. 2018. Accessed July 13, 2025. <https://iris.who.int/bitstream/handle/10665/274628/9789241514033-eng.pdf?sequence=1&isAllowed=y>
74. Seyed-Nezhad M, Ahmadi B, Akbari-Sari A. Factors affecting the successful implementation of the referral system: a scoping review. *J Fam Med Prim Care*. 2021;10:4364–4375. https://doi.org/10.4103/jfmpc.jfmpc_514_21
75. Ko GT, So WY, Tong PC, et al. From design to implementation—the Joint Asia Diabetes Evaluation (JADE) program: a descriptive report of an electronic web-based diabetes management program. *BMC Med Inform Decis Mak*. 2010;10:26. <https://doi.org/10.1186/1472-6947-10-26>
76. Yu G, Tam HCH, Huang C, et al. Lessons and applications of omics research in diabetes epidemiology. *Curr Diab Rep*. 2024;24:27–44. <https://doi.org/10.1007/s11892-024-01533-7>
77. Cefalu WT, Franks PW, Rosenblum ND, et al. A global initiative to deliver precision health in diabetes. *Nat Med*. 2024;30:1819–1822. <https://doi.org/10.1038/s41591-024-03032-4>
78. Seidu S, Walker NS, Bodicoat DH, Davies MJ, Khunti K. A systematic review of interventions targeting primary care or community based professionals on cardio-metabolic risk factor control in people with diabetes. *Diabetes Res Clin Pract*. 2016;113:1–13. <https://doi.org/10.1016/j.diabres.2016.01.022>
79. Estrella ML, Allen-Meares P, Ricardo AC, et al. Prospective associations of health literacy with clinical outcomes in adults with CKD: findings from the CRIC study. *Nephrol Dial Transplant*. 2023;38:904–912. <https://doi.org/10.1093/ndt/gfac201>
80. Norton JM, Moxey-Mims MM, Eggers PW, et al. Social determinants of racial disparities in CKD. *J Am Soc Nephrol*. 2016;27:2576–2595. <https://doi.org/10.1681/ASN.2016010027>
81. Meggetto E, Kent F, Ward B, Keleher H. Factors influencing implementation of organizational health literacy: a realist review. *J Health Organ Manag*. 2020. <https://doi.org/10.1108/JHOM-06-2019-0167>
82. Muscat DM, Gessler D, Ayre J, et al. Seeking a deeper understanding of ‘distributed health literacy’: a systematic review. *Health Expect*. 2022;25:856–868. <https://doi.org/10.1111/hex.13450>
83. Abreu L, Nunes JA, Taylor P, Silva S. Distributed health literacy among people living with type 2 diabetes in Portugal: defining levels of awareness and support. *Health Soc Care*

- Community. 2018;26:90–101. <https://doi.org/10.1111/hsc.12465>
84. van Kessel R, Wong BLH, Clemens T, Brand H. Digital health literacy as a super determinant of health: more than simply the sum of its parts. *Internet Interv.* 2022;27:100500. <https://doi.org/10.1016/j.invent.2022.100500>
 85. Nair D, Wilson FP. Patient-reported outcome measures for adults with kidney disease: current measures, ongoing initiatives, and future opportunities for incorporation into patient-centered kidney care. *Am J Kidney Dis.* 2019;74:791–802. <https://doi.org/10.1053/j.ajkd.2019.05.025>
 86. Wermeling PR, Gorter KJ, Stellato RK, de Wit GA, Beulens JW, Rutten GE. Effectiveness and cost-effectiveness of 3-monthly versus 6-monthly monitoring of well-controlled type 2 diabetes patients: a pragmatic randomised controlled patient-preference equivalence trial in primary care (EFFIMODI study). *Diabetes Obes Metab.* 2014;16:841–849. <https://doi.org/10.1111/dom.12288>
 87. Ayala GX, Chan JCN, Cherrington AL, et al. Predictors and effects of participation in peer support: a prospective structural equation modeling analysis. *Ann Behav Med.* 2022;56:909–919. <https://doi.org/10.1093/abm/kaab114>
 88. Patil SJ, Ruppert T, Koopman RJ, et al. Peer support interventions for adults with diabetes: a meta-analysis of hemoglobin A(1c) outcomes. *Ann Fam Med.* 2016;14:540–551. <https://doi.org/10.1370/afm.1982>
 89. Kalantar-Zadeh K, Li KT, Tantisattamo E, et al. Living well with kidney disease by patient and care-partner empowerment: kidney health for everyone everywhere. *Kidney Int.* 2021;99:278–284. <https://doi.org/10.1016/j.kint.2020.11.004>
 90. Lee JT, Netuveli G, Majeed A, Millett C. The effects of pay for performance on disparities in stroke, hypertension, and coronary heart disease management: interrupted time series study. *PLoS One.* 2011;6:e27236. <https://doi.org/10.1371/journal.pone.0027236>
 91. Millett C, Netuveli G, Saxena S, Majeed A. Impact of pay for performance on ethnic disparities in intermediate outcomes for diabetes: a longitudinal study. *Diabetes Care.* 2009;32:404–409. <https://doi.org/10.2337/dc08-0912>
 92. Millett C, Bottle A, Ng A, et al. Pay for performance and the quality of diabetes management in individuals with and without co-morbid medical conditions. *J R Soc Med.* 2009;102:369–377. <https://doi.org/10.1258/jrsm.2009.090171>
 93. Langdown C, Peckham S. The use of financial incentives to help improve health outcomes: is the quality and outcomes framework fit for purpose? A systematic review. *J Public Health (Oxf).* 2014;36:251–258. <https://doi.org/10.1093/pubmed/fdt077>
 94. Burrows NR, Zhang Y, Hora I, et al. Sustained lower incidence of diabetes-related end-stage kidney disease among American Indians and Alaska natives, blacks, and hispanics in the U.S., 2000–2016. *Diabetes Care.* 2020;43:2090–2097. <https://doi.org/10.2337/dc20-0495>
 95. Li Y, Barve K, Cockrell M, et al. Managing comorbidities in chronic kidney disease reduces utilization and costs. *BMC Health Serv Res.* 2023;23:1418. <https://doi.org/10.1186/s12913-023-10424-8>
 96. Wu H, Yang A, Lau ESH, et al. Age- and sex-specific hospital bed-day rates in people with and without type 2 diabetes: a territory-wide population-based cohort study of 1.5 million people in Hong Kong. *PLoS Med.* 2023;20:e1004261. <https://doi.org/10.1371/journal.pmed.1004261>
 97. Leung WY, So WY, Tong PC, Chan NN, Chan JCN. Effects of structured care by a pharmacist-diabetes specialist team in patients with type 2 diabetic nephropathy. *Am J Med.* 2005;118:1414. <https://doi.org/10.1016/j.amjmed.2005.07.050>
 98. Ueki K, Sasako T, Okazaki Y, et al. Effect of an intensified multifactorial intervention on cardiovascular outcomes and mortality in type 2 diabetes (J-DOIT3): an open-label, randomised controlled trial. *Lancet Diabetes Endocrinol.* 2017;5:951–964. [https://doi.org/10.1016/S2213-8587\(17\)30327-3](https://doi.org/10.1016/S2213-8587(17)30327-3)
 99. Li PK, Garcia-Garcia G, Lui SF, et al. Kidney health for everyone everywhere—from prevention to detection and equitable access to care. *Kidney Int.* 2020;97:226–232. <https://doi.org/10.1016/j.kint.2019.12.002>
 100. Ved RR, Gupta G, Singh S. India's health and wellness centres: realizing universal health coverage through comprehensive primary health care. *WHO S East Asia J Public Health.* 2019;8:18–20. <https://doi.org/10.4103/2224-3151.255344>
 101. Singh K, Narayan KMV, Eggleston K. Economic impact of diabetes in South Asia: the magnitude of the problem. *Curr Diab Rep.* 2019;19:34. <https://doi.org/10.1007/s11892-019-1146-1>
 102. Reddy KS. India's aspirations for universal health coverage. *N Engl J Med.* 2015;373:1–5. <https://doi.org/10.1056/NEJMp1414214>
 103. Wu H, Lau ESH, Yang A, et al. Young age at diabetes diagnosis amplifies the effect of diabetes duration on risk of chronic kidney disease: a prospective cohort study. *Diabetologia.* 2021;64:1990–2000. <https://doi.org/10.1007/s00125-021-05494-4>
 104. Gatimu SM, Milimo BW, Sebastian MS. Prevalence and determinants of diabetes among older adults in Ghana. *BMC Public Health.* 2016;16:1174. <https://doi.org/10.1186/s12889-016-3845-8>